







This timeless, remodeled Mid-Century Modern



 Single Family  1676 SQFT  3 Beds  1/1 Baths  1 Car  0.15 Acre

PROPERTY DETAILS

This timeless, remodeled Mid-Century Modern home features clean, minimalist lines and an iconic tri-level design that is truly not to be missed... Key improvements include a sewer line replacement (2023), a new water heater (2023), a recently remodeled downstairs bathroom, and new plumbing in the bathrooms (excluding the upstairs shower). The home also features a newer furnace, AC, roof, and windows, ensuring peace of mind for years to come.

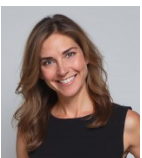
Inside, you will find a bright, inviting floor plan filled with natural light. Upon entry, floor-to-ceiling windows bathe the living area in warmth, while the layout flows seamlessly into the kitchen and dining space. The downstairs family room offers a cozy fireplace, the third bedroom, and direct access to the yard. The upper level hosts two bedrooms and the primary bathroom. Outside, the private, fenced-in yard is perfect for gardening or hosting, complemented by an attached garage.



Jennifer Steinert
303-246-2226
jen@madisonprops.com



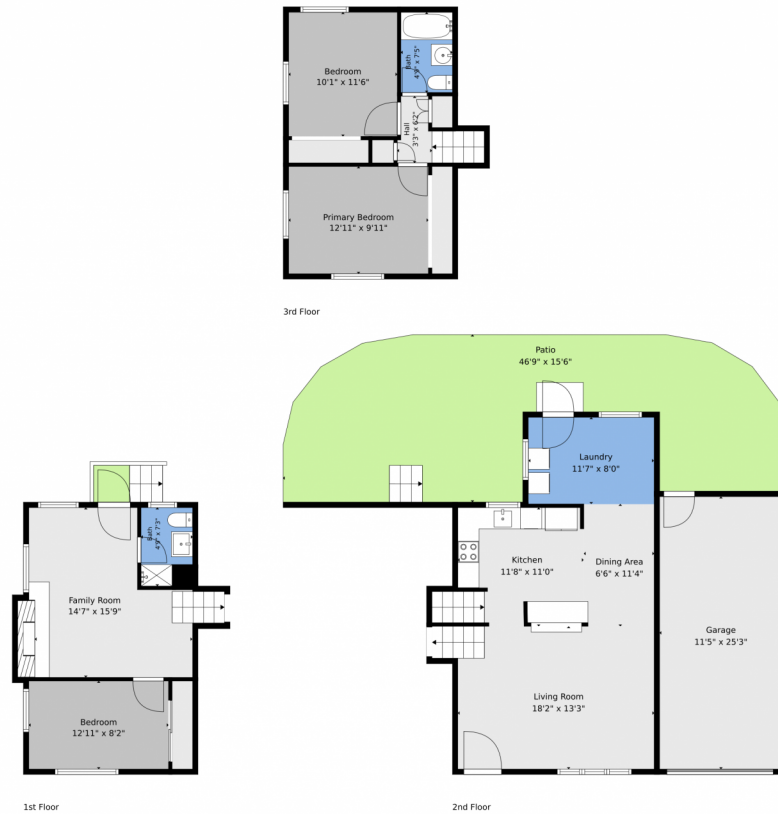
Located on a quiet street, this home is just blocks from the Clear Creek Trail system, offering miles of walking and biking that connect to Golden, the South Platte River Trail, Downtown Denver, Wash Park, and Cherry Creek. This is within the scenic 300-acre Wheat Ridge Greenbelt. Plus Anderson Park a few blocks away, which features a sports field, a playground, and a pool. With close proximity to Old Town Arvada, the Wheat Ridge Rec Center, and easy access to I-70, this home offers the perfect balance of mountain convenience and city accessibility.



Jennifer Steinert
303-246-2226
jen@madisonprops.com



4660 Estes Street, Wheat Ridge, CO 80033 – All Levels

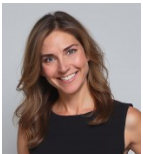


TOTAL: 1312 sq. ft
1st floor: 381 sq. ft, 2nd floor: 554 sq. ft, 3rd floor: 377 sq. ft
EXCLUDED AREAS: FIREPLACE: 8 sq. ft, GARAGE: 287 sq. ft, PATIO: 553 sq. ft,
WALLS: 169 sq. ft

Floor Plan Created By V1photos.com. Measurements Deamed Highly Reliable But Not Guaranteed.



Disclaimer: Sizes and Dimensions are Approximate, Actual May Vary.



Jennifer Steinert
303-246-2226
jen@madisonprops.com

