

Beautiful, Gate community of Carriage Village!



Single Family



1930 SQFT



4 Beds



2/1 Baths



2 Car



0.13 Acre

PROPERTY DETAILS

Welcome to this stunning Bill Wall residence in the gated Carriage Village community, where comfort and low-maintenance living thrive. Enjoy more free time with HOA-maintained lawns. This home features 4 bedrooms (one in the partially finished basement), 2 full bathrooms, 1 half bath, and 1,930 sq. ft. of living space. The dramatic living and dining area boasts vaulted ceilings and large windows, while the cozy family room with a fireplace flows into the breakfast nook and kitchen, equipped with granite countertops and ample workspace. The primary suite offers a private bath with dual sinks and a soaking tub. Relax on the private patio overlooking maintained grounds. Conveniently located near parks, schools, shopping, and major routes, this home awaits your personal touch.



Beth Gibson

720-849-3577

bethgibson@kw.com

<https://bethgibson.kw.com/>



Scan code
for more
property
details





TOTAL: 1950 sq. ft
Basement: 176 sq. ft, 1st floor: 985 sq. ft, 2nd floor: 789 sq. ft
EXCLUDED AREAS: UTILITY: 171 sq. ft, BASEMENT: 593 sq. ft, GARAGE: 385 sq. ft,
PORCH: 41 sq. ft, COVERED PATIO: 192 sq. ft, OPEN TO BELOW: 486 sq. ft,
WALLS: 253 sq. ft

Floor Plan Created By V1photos.com. Measurements Deamed Highly Reliable But Not Guaranteed.



Disclaimer: Sizes and Dimensions are Approximate, Actual May Vary.



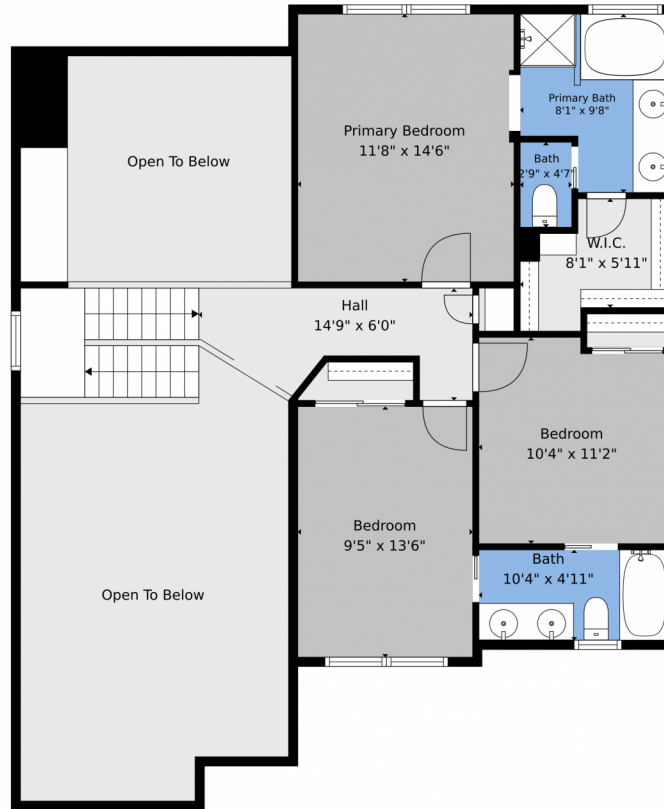
Beth Gibson
720-849-3577
bethgibson@kw.com
<https://bethgibson.kw.com/>



Scan code
for more
property
details



11349 E Louisiana Ave, Aurora, CO 80012 – 2nd Level



TOTAL: 1950 sq. ft
Basement: 176 sq. ft, 1st floor: 985 sq. ft, 2nd floor: 789 sq. ft
EXCLUDED AREAS: UTILITY: 171 sq. ft, BASEMENT: 593 sq. ft, GARAGE: 385 sq. ft,
PORCH: 41 sq. ft, COVERED PATIO: 192 sq. ft, OPEN TO BELOW: 486 sq. ft,
WALLS: 253 sq. ft

Floor Plan Created By V1photos.com. Measurements Deamed Highly Reliable But Not Guaranteed.



Disclaimer: Sizes and Dimensions are Approximate, Actual May Vary.

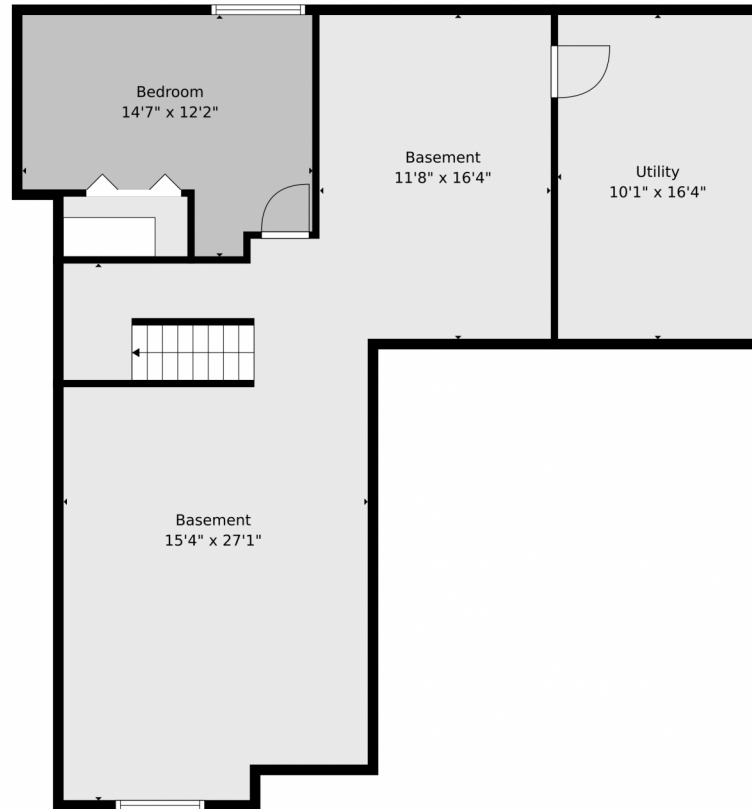


Beth Gibson
720-849-3577
bethgibson@kw.com
<https://bethgibson.kw.com/>



Scan code
for more
property
details

11349 E Louisiana Ave, Aurora, CO 80012 – Basement



TOTAL: 1950 sq. ft
Basement: 176 sq. ft, 1st floor: 985 sq. ft, 2nd floor: 789 sq. ft
EXCLUDED AREAS: UTILITY: 171 sq. ft, BASEMENT: 593 sq. ft, GARAGE: 385 sq. ft,
PORCH: 41 sq. ft, COVERED PATIO: 192 sq. ft, OPEN TO BELOW: 486 sq. ft,
WALLS: 253 sq. ft

Floor Plan Created By V1photos.com. Measurements Deamed Highly Reliable But Not Guaranteed.



Disclaimer: Sizes and Dimensions are Approximate, Actual May Vary.



Beth Gibson
720-849-3577
bethgibson@kw.com
<https://bethgibson.kw.com/>

