


 Single Family
  3474 SQFT
  3 Beds
  3 Baths
  2 Car
  6.4 Acre

## PROPERTY DETAILS

Nestled at the end of a quiet cul-de-sac, this stunning 3,474 sqft ranch-style home sits on over 6 acres, offering privacy and breathtaking southern exposure. A 500-foot private driveway leads to the home and guest parking area. The sunlit open floor plan features hardwood floors, extensive cabinetry, and elegant granite countertops. The spacious living area boasts a natural gas stone fireplace, ideal for relaxation and entertaining.

This home includes two luxurious primary en-suites and flexible space for an office or extra bedrooms. With 17 closets and a floored attic, storage is ample. A converted heated greenhouse serves as an indoor golf area. An oversized deck invites enjoyment of the peaceful surroundings.

Modern upgrades include a newer furnace, reverse osmosis system, and a generator. Just minutes from skiing, shopping, and dining, this property offers a rare mountain living opportunity without sacrificing convenience.



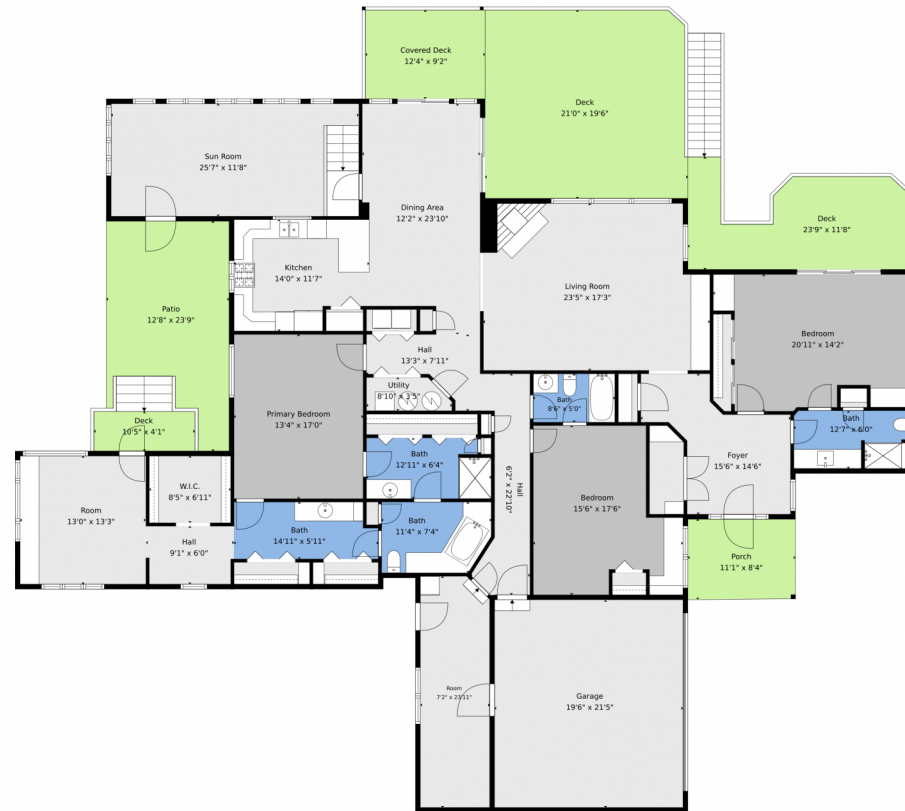
**Tammy Drozda**  
 720-308-1652  
 tammy@madisonprops.com  
<https://www.tammydrozdahomes.com>



**Peg Schroeder**  
 303-885-4404  
 peg@tuppersteam.com



# 90 Rose Hip Lane, Evergreen, CO 80439 – Main



**TOTAL: 3053 sq. ft**  
1st floor: 3053 sq. ft  
EXCLUDED AREAS: ROOM: 169 sq. ft, GARAGE: 418 sq. ft, PORCH: 92 sq. ft,  
DECK: 712 sq. ft, COVERED DECK: 113 sq. ft, PATIO: 239 sq. ft,  
UTILITY: 27 sq. ft, WALLS: 201 sq. ft

Floor Plan Created By V1photos.com. Measurements Deamed Highly Reliable But Not Guaranteed.



Disclaimer: Sizes and Dimensions are Approximate, Actual May Vary.



**Tammy Drozda**  
720-308-1652  
tammy@madisonprops.com  
<https://www.tammydrozdahomes.com>



**Peg Schroeder**  
303-885-4404  
peg@tuppersteam.com



Scan code  
for more  
property  
details

