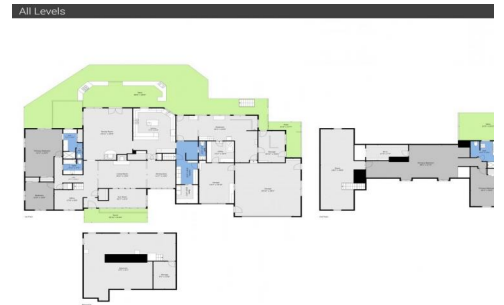




677 County Road 18
 Longmont, CO 80504
 COMMUNITY: Pleasant View, SE of Longmont, Colorado

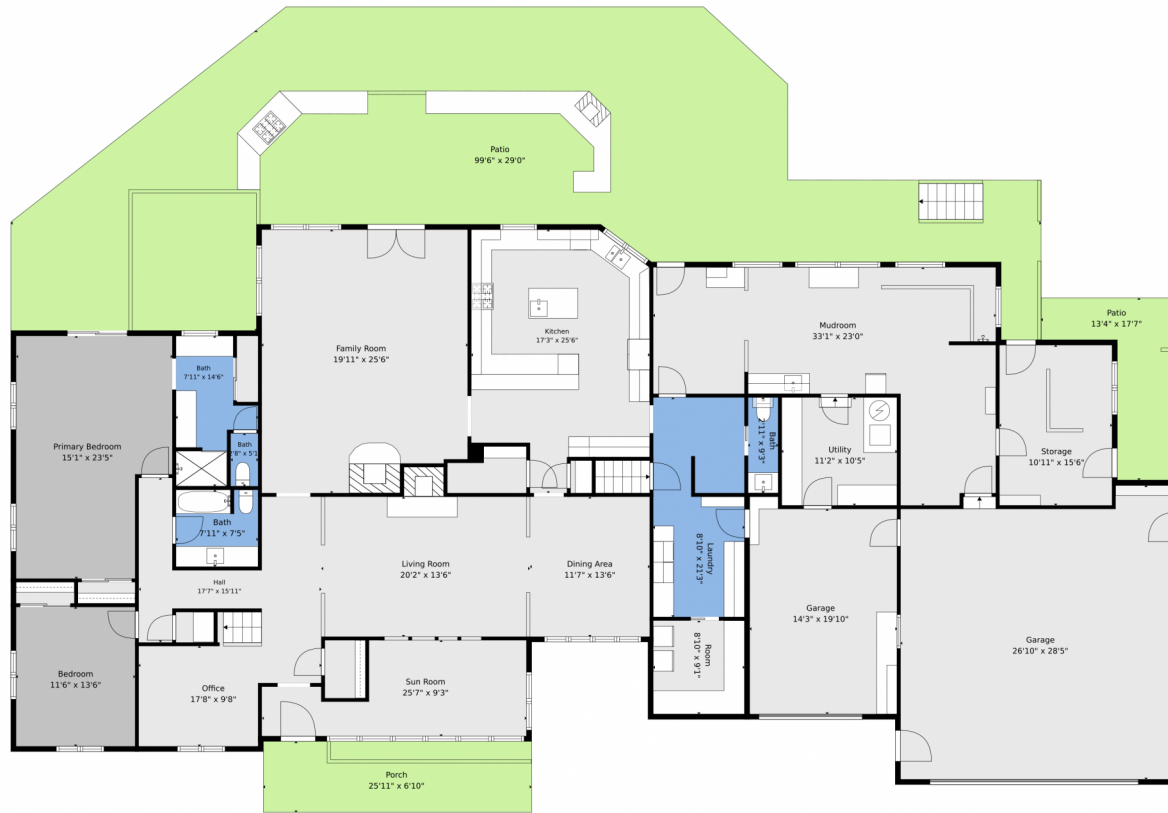


 Single Family
  7050 SQFT
  4 Beds
  3/1 Baths
  3 Car
  10 Acre



Patricia Turner
 303-362-3821
patricia@turnerlongmont.com
<https://turnerlongmont.com>





TOTAL: 5171 sq. ft
Basement: 72 sq. ft, 1st floor: 3600 sq. ft, 2nd floor: 1499 sq. ft
EXCLUDED AREAS: STORAGE: 299 sq. ft, BASEMENT: 869 sq. ft, GARAGE: 1003 sq. ft,
PORCH: 178 sq. ft, PATIO: 2310 sq. ft, LOW CEILING: 880 sq. ft,
ATTIC: 731 sq. ft, WALLS: 448 sq. ft

Floor Plan Created By V1photos.com. Measurements Deamed Highly Reliable But Not Guaranteed.

Disclaimer: Sizes and Dimensions are Approximate, Actual May Vary.



Patricia Turner
303-362-3821
patricia@turnerlongmont.com
<https://turnerlongmont.com>



Scan code
for more
property
details



677 County Road 18, Longmont, CO 80504 – 2nd Level



TOTAL: 5171 sq. ft
Basement: 72 sq. ft, 1st floor: 3600 sq. ft, 2nd floor: 1499 sq. ft
EXCLUDED AREAS: STORAGE: 299 sq. ft, BASEMENT: 869 sq. ft, GARAGE: 1003 sq. ft,
PORCH: 178 sq. ft, PATIO: 2310 sq. ft, LOW CEILING: 880 sq. ft,
ATTIC: 731 sq. ft, WALLS: 448 sq. ft

Floor Plan Created By V1photos.com. Measurements Deamed Highly Reliable But Not Guaranteed.



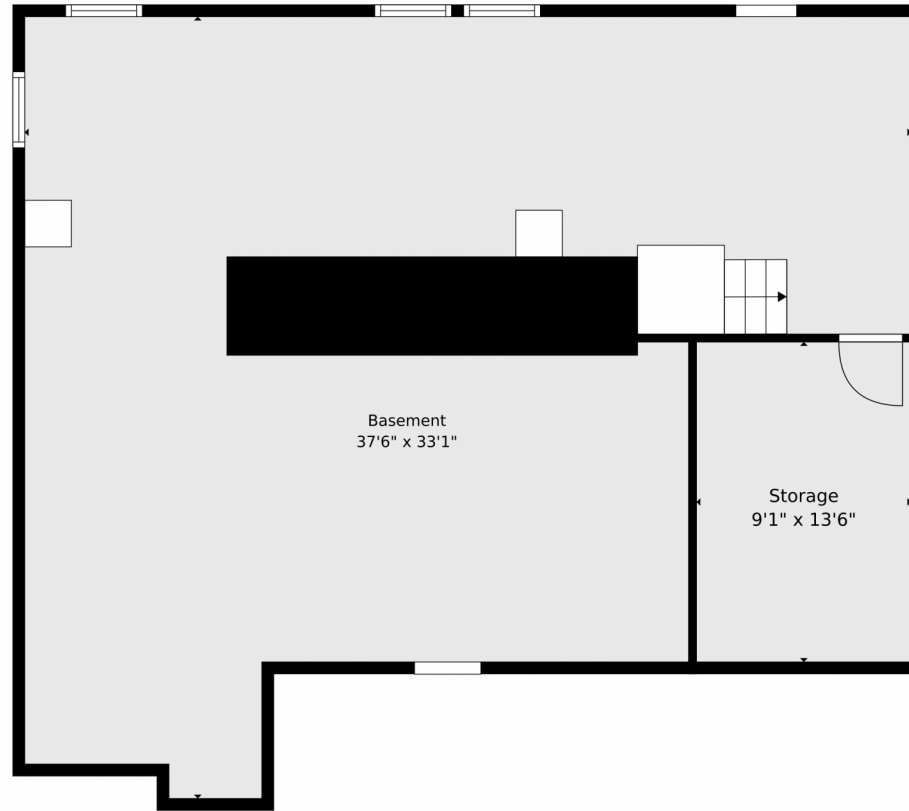
Disclaimer: Sizes and Dimensions are Approximate, Actual May Vary.



Patricia Turner
303-362-3821
patricia@turnerlongmont.com
<https://turnerlongmont.com>



677 County Road 18, Longmont, CO 80504 – Lower Level



TOTAL: 5171 sq. ft

Basement: 72 sq. ft, 1st floor: 3600 sq. ft, 2nd floor: 1499 sq. ft
EXCLUDED AREAS: STORAGE: 299 sq. ft, BASEMENT: 869 sq. ft, GARAGE: 1003 sq. ft,
PORCH: 178 sq. ft, PATIO: 2310 sq. ft, LOW CEILING: 880 sq. ft,
ATTIC: 731 sq. ft, WALLS: 448 sq. ft

Floor Plan Created By V1photos.com. Measurements Deamed Highly Reliable But Not Guaranteed.



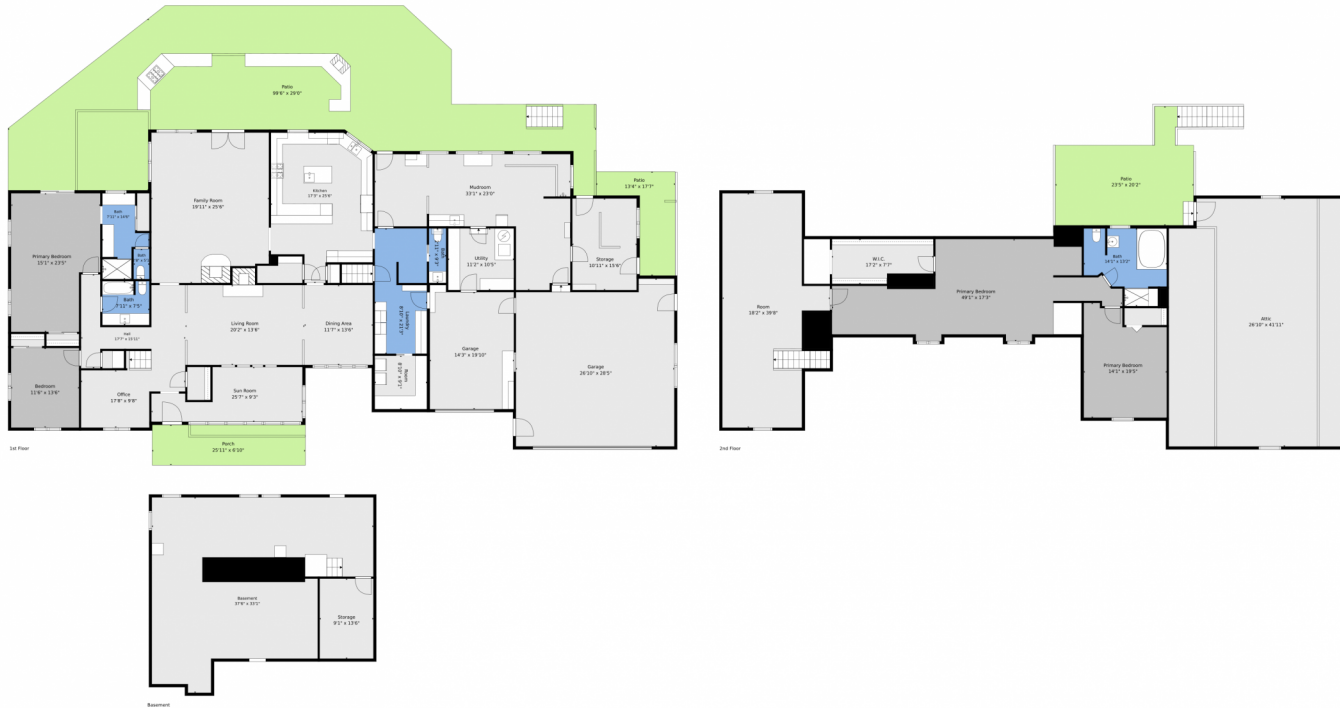
Disclaimer: Sizes and Dimensions are Approximate, Actual May Vary.



Patricia Turner
303-362-3821
patricia@turnerlongmont.com
<https://turnerlongmont.com>



677 County Road 18, Longmont, CO 80504 – All Levels



TOTAL: 5171 sq. ft
Basement: 72 sq. ft, 1st floor: 3600 sq. ft, 2nd floor: 1499 sq. ft,
EXCLUDED AREAS: STORAGE: 299 sq. ft, BASEMENT: 869 sq. ft, GARAGE: 1003 sq. ft,
PORCH: 178 sq. ft, PATIO: 2310 sq. ft, LOW CEILING: 880 sq. ft,
ATTIC: 731 sq. ft, WALLS: 448 sq. ft

Floor Plan Created By V1photos.com. Measurements Deamed Highly Reliable But Not Guaranteed.



Disclaimer: Sizes and Dimensions are Approximate, Actual May Vary.



Patricia Turner
303-362-3821
patricia@turnerlongmont.com
<https://turnerlongmont.com>



Scan code
for more
property
details

