

Single Family



3200 SQFT



Tony Geraty
720-629-9999
tgsellshomes@gmail.com



Scan code
for more
property
details



3671 Sunridge Terrace Drive, Castle Rock, CO 80109 – Main



TOTAL: 2778 sq. ft

Basement: 640 sq. ft, 1st floor: 1041 sq. ft, 2nd floor: 1097 sq. ft
EXCLUDED AREAS: UNDEFINED: 13 sq. ft, UTILITY: 28 sq. ft, LOW CEILING: 234 sq. ft,
GARAGE: 615 sq. ft, PORCH: 108 sq. ft, PATIO: 281 sq. ft,
OPEN TO BELOW: 224 sq. ft, WALLS: 259 sq. ft

Floor Plan Created By V1photos.com. Measurements Deamed Highly Reliable But Not Guaranteed.



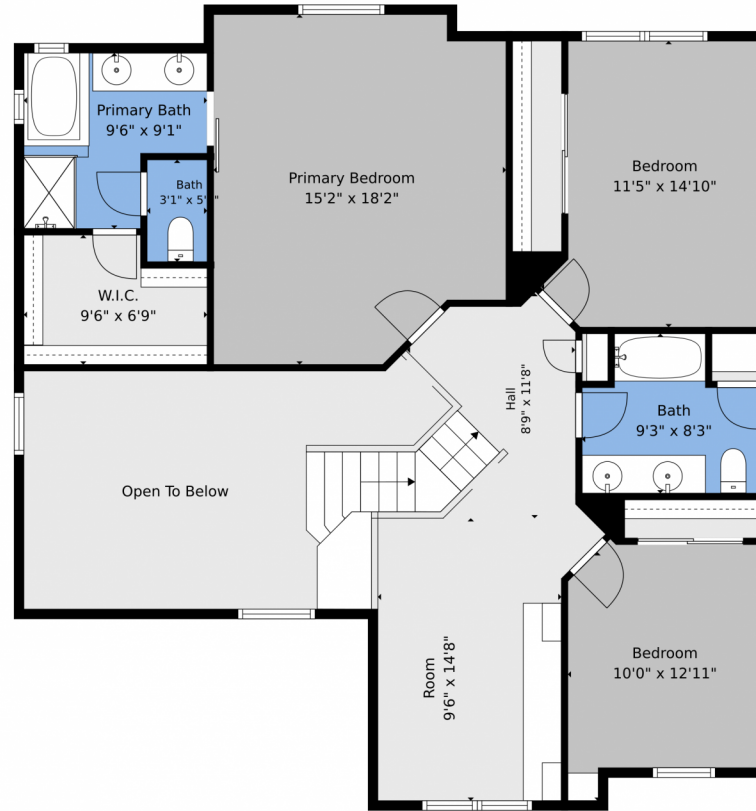
Disclaimer: Sizes and Dimensions are Approximate, Actual May Vary.



Tony Geraty
720-629-9999
tgshomes@gmail.com



3671 Sunridge Terrace Drive, Castle Rock, CO 80109 – 2nd Level



TOTAL: 2778 sq. ft

Basement: 640 sq. ft, 1st floor: 1041 sq. ft, 2nd floor: 1097 sq. ft,
EXCLUDED AREAS: UNDEFINED: 13 sq. ft, UTILITY: 28 sq. ft, LOW CEILING: 234 sq. ft,
GARAGE: 615 sq. ft, PORCH: 108 sq. ft, PATIO: 281 sq. ft,
OPEN TO BELOW: 224 sq. ft, WALLS: 259 sq. ft

Floor Plan Created By V1photos.com. Measurements Deamed Highly Reliable But Not Guaranteed.



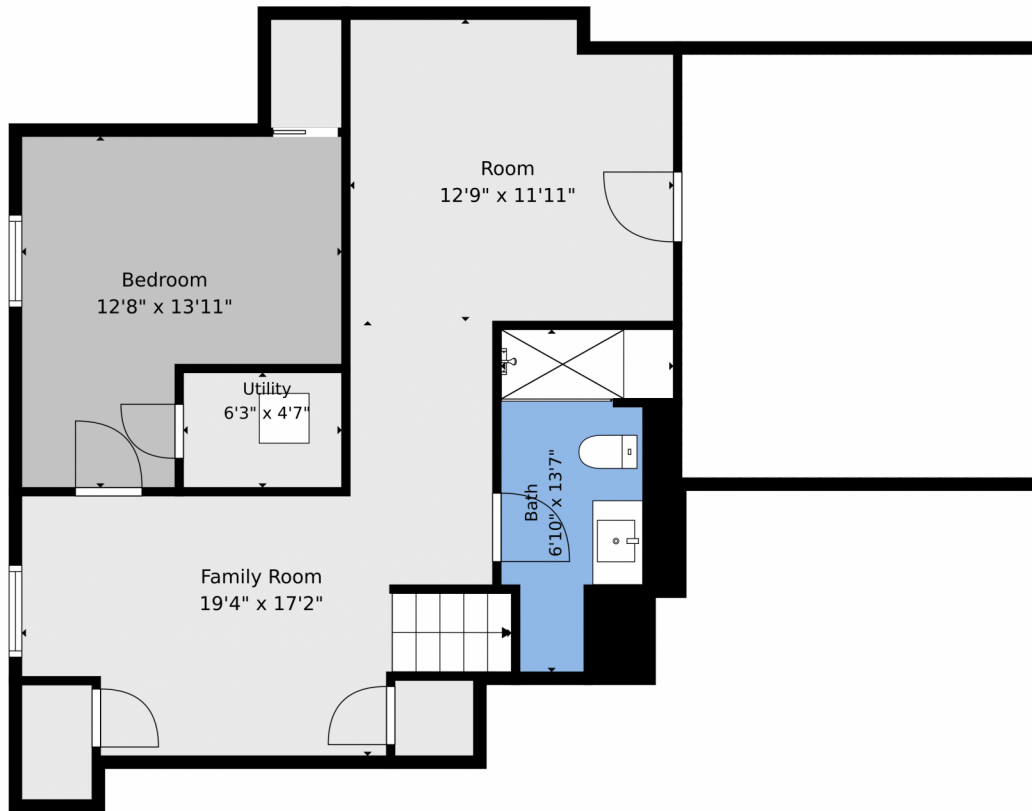
Disclaimer: Sizes and Dimensions are Approximate, Actual May Vary.



Tony Geraty
720-629-9999
tgsellshomes@gmail.com



3671 Sunridge Terrace Drive, Castle Rock, CO 80109 – Basement



TOTAL: 2778 sq. ft

Basement: 640 sq. ft, 1st floor: 1041 sq. ft, 2nd floor: 1097 sq. ft
EXCLUDED AREAS: UNDEFINED: 13 sq. ft, UTILITY: 28 sq. ft, LOW CEILING: 234 sq. ft,
GARAGE: 615 sq. ft, PORCH: 108 sq. ft, PATIO: 281 sq. ft,
OPEN TO BELOW: 224 sq. ft, WALLS: 259 sq. ft

Floor Plan Created By V1photos.com. Measurements Deamed Highly Reliable But Not Guaranteed.



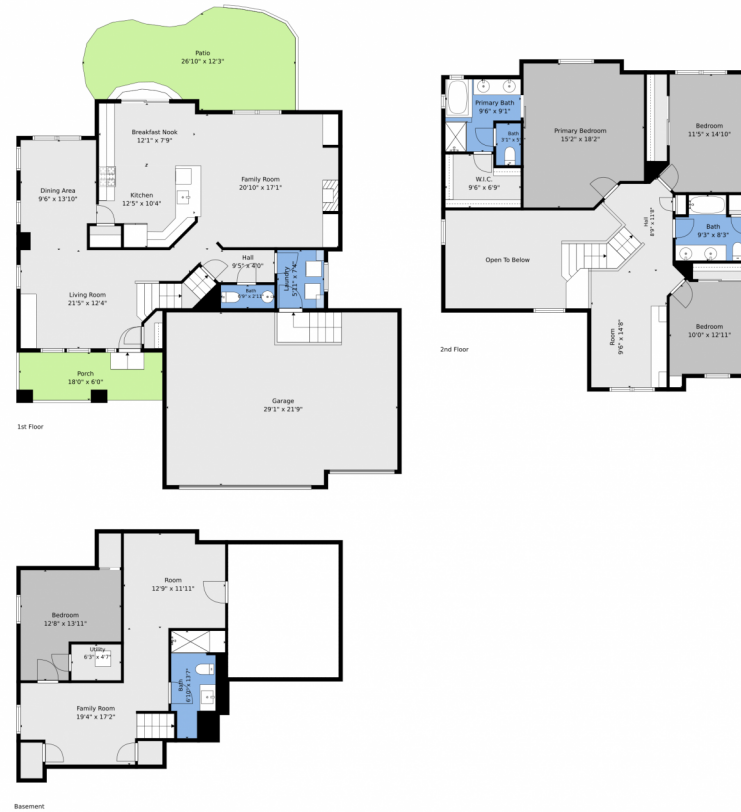
Disclaimer: Sizes and Dimensions are Approximate, Actual May Vary.



Tony Geraty
720-629-9999
tgsellshomes@gmail.com



3671 Sunridge Terrace Drive, Castle Rock, CO 80109 – All Levels



TOTAL: 2778 sq. ft

Basement: 640 sq. ft, 1st floor: 1041 sq. ft, 2nd floor: 1097 sq. ft,
EXCLUDED AREAS: UNDEFINED: 13 sq. ft, UTILITY: 28 sq. ft, LOW CEILING: 234 sq. ft,
GARAGE: 615 sq. ft, PORCH: 108 sq. ft, PATIO: 281 sq. ft,
OPEN TO BELOW: 224 sq. ft, WALLS: 259 sq. ft

Floor Plan Created By V1photos.com. Measurements Deamed Highly Reliable But Not Guaranteed.



Disclaimer: Sizes and Dimensions are Approximate, Actual May Vary.



Tony Geraty
720-629-9999
tgsellshomes@gmail.com

