




floorplan_single_1



 Townhouse

 1452 SQFT

 2 Beds

 1/1 Baths



Taylor Haas
 303-665-7368
 taylorh@coloradorpm.com
<https://www.coloradorpm.com/available-rental-properties-denver>



6235 White Wolf Point, Colorado Springs, CO 80925 — Main Level



TOTAL: 1325 sq. ft
1st floor: 578 sq. ft, 2nd floor: 747 sq. ft
EXCLUDED AREAS: STORAGE: 21 sq. ft, GARAGE: 276 sq. ft, PORCH: 94 sq. ft,
WALLS: 95 sq. ft

Floor Plan Created By V1photos.com. Measurements Deamed Highly Reliable But Not Guaranteed.

Disclaimer: Sizes and Dimensions are Approximate, Actual May Vary.



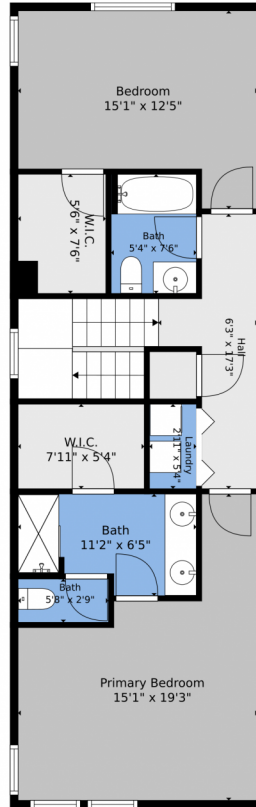
Taylor Haas
303-665-7368
taylorh@coloradorpm.com
<https://www.coloradorpm.com/available-rental-properties-denver>



Scan code
for more
property
details



6235 White Wolf Point, Colorado Springs, CO 80925 – Upper Level



TOTAL: 1325 sq. ft
1st floor: 578 sq. ft, 2nd floor: 747 sq. ft
EXCLUDED AREAS: STORAGE: 21 sq. ft, GARAGE: 276 sq. ft, PORCH: 94 sq. ft,
WALLS: 95 sq. ft

Floor Plan Created By V1photos.com. Measurements Deamed Highly Reliable But Not Guaranteed.



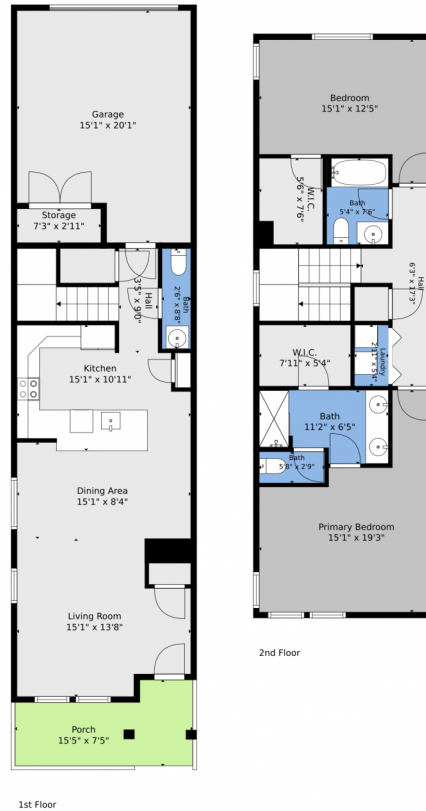
Disclaimer: Sizes and Dimensions are Approximate, Actual May Vary.



Taylor Haas
303-665-7368
taylorh@coloradorp.com
<https://www.coloradorp.com/available-rental-properties-denver>



6235 White Wolf Point, Colorado Springs, CO 80925 – All Levels



TOTAL: 1325 sq. ft
1st floor: 578 sq. ft, 2nd floor: 747 sq. ft
EXCLUDED AREAS: STORAGE: 21 sq. ft, GARAGE: 276 sq. ft, PORCH: 94 sq. ft,
WALLS: 95 sq. ft

Floor Plan Created By V1photos.com. Measurements Deamed Highly Reliable But Not Guaranteed.



Disclaimer: Sizes and Dimensions are Approximate, Actual May Vary.



Taylor Haas
303-665-7368
taylorh@coloradorpm.com
<https://www.coloradorpm.com/available-rental-properties-denver>



Scan code
for more
property
details

