



534 Bickley Street
Colorado Springs, CO 80911



Single Family



1714 SQFT



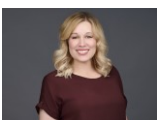
4 Beds



2 Baths



0.16 Acre



Amanda Moss
719-213-9324
amy.mossco@gmail.com



Scan code
for more
property
details



534 Bickley Street, Colorado Springs, CO 80911 – Lower Level



TOTAL: 1445 sq. ft
Basement: 601 sq. ft, 1st floor: 844 sq. ft
EXCLUDED AREAS: UTILITY: 139 sq. ft, GARAGE: 265 sq. ft, PORCH: 31 sq. ft,
COVERED DECK: 193 sq. ft, WALLS: 140 sq. ft

Floor Plan Created By V1photos.com. Measurements Deamed Highly Reliable But Not Guaranteed.

Disclaimer: Sizes and Dimensions are Approximate, Actual May Vary.



Amanda Moss
719-213-9324
amy.mossco@gmail.com



534 Bickley Street, Colorado Springs, CO 80911 – Main Level



TOTAL: 1445 sq. ft
Basement: 601 sq. ft, 1st floor: 844 sq. ft
EXCLUDED AREAS: UTILITY: 139 sq. ft, GARAGE: 265 sq. ft, PORCH: 31 sq. ft,
COVERED DECK: 193 sq. ft, WALLS: 140 sq. ft

Floor Plan Created By V1photos.com. Measurements Deamed Highly Reliable But Not Guaranteed.



Disclaimer: Sizes and Dimensions are Approximate, Actual May Vary.



Amanda Moss
719-213-9324
amy.mossco@gmail.com



534 Bickley Street, Colorado Springs, CO 80911 – All Levels



TOTAL: 1445 sq. ft
Basement: 601 sq. ft, 1st floor: 844 sq. ft
EXCLUDED AREAS: UTILITY: 139 sq. ft, GARAGE: 265 sq. ft, PORCH: 31 sq. ft,
COVERED DECK: 193 sq. ft, WALLS: 140 sq. ft

Floor Plan Created By V1photos.com. Measurements Deamed Highly Reliable But Not Guaranteed.



Disclaimer: Sizes and Dimensions are Approximate, Actual May Vary.



Amanda Moss
719-213-9324
amy.mossco@gmail.com



Scan code
for more
property
details