
 Single Family

 1156 SQFT

 3 Beds

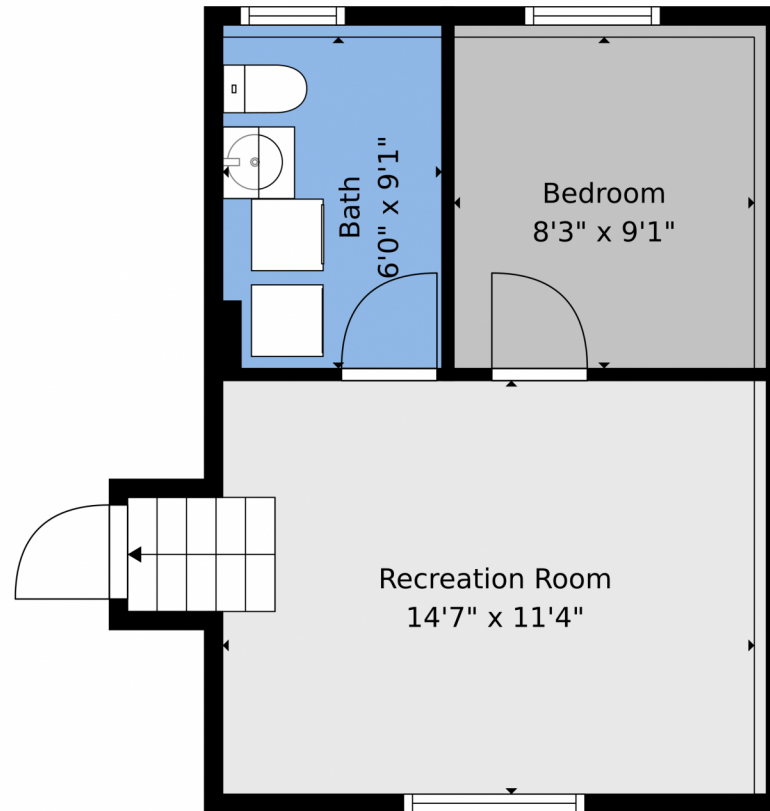
 1/1 Baths



**Taylor Haas**  
 303-665-7368  
 taylorh@coloradorpm.com  
<https://www.coloradorpm.com/available-rental-properties-denver>



4935 Montebello Drive, Colorado Springs, CO 80918 – Lower Level



**TOTAL: 1071 sq. ft**  
1st floor: 325 sq. ft, 2nd floor: 388 sq. ft, 3rd floor: 358 sq. ft  
EXCLUDED AREAS: GARAGE: 254 sq. ft, PORCH: 30 sq. ft, PATIO: 278 sq. ft,  
WALLS: 148 sq. ft

Floor Plan Created By V1photos.com. Measurements Deamed Highly Reliable But Not Guaranteed.



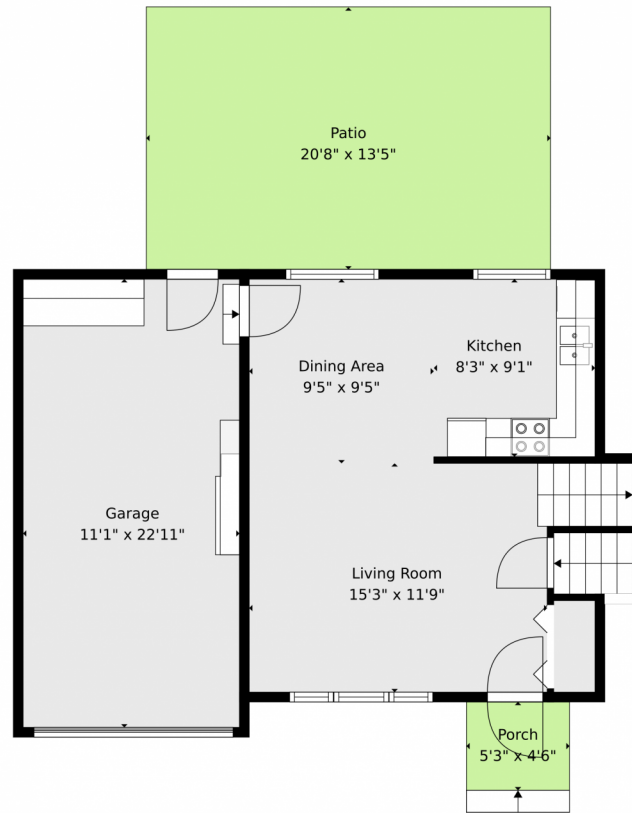
Disclaimer: Sizes and Dimensions are Approximate, Actual May Vary.



**Taylor Haas**  
303-665-7368  
taylorh@coloradorpm.com  
<https://www.coloradorpm.com/available-rental-properties-denver>



# 4935 Montebello Drive, Colorado Springs, CO 80918 – Main Level



**TOTAL: 1071 sq. ft**  
1st floor: 325 sq. ft, 2nd floor: 388 sq. ft, 3rd floor: 358 sq. ft  
EXCLUDED AREAS: GARAGE: 254 sq. ft, PORCH: 30 sq. ft, PATIO: 278 sq. ft,  
WALLS: 148 sq. ft

Floor Plan Created By V1photos.com. Measurements Deamed Highly Reliable But Not Guaranteed.



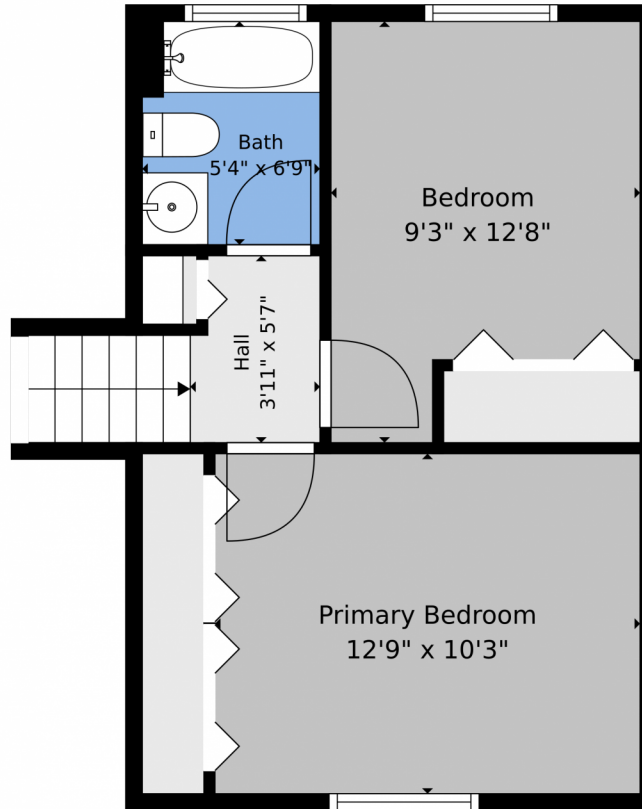
Disclaimer: Sizes and Dimensions are Approximate, Actual May Vary.



**Taylor Haas**  
303-665-7368  
taylorh@coloradorpm.com  
<https://www.coloradorpm.com/available-rental-properties-denver>



4935 Montebello Drive, Colorado Springs, CO 80918 – Upper Level



**TOTAL: 1071 sq. ft**  
1st floor: 325 sq. ft, 2nd floor: 388 sq. ft, 3rd floor: 358 sq. ft  
EXCLUDED AREAS: GARAGE: 254 sq. ft, PORCH: 30 sq. ft, PATIO: 278 sq. ft,  
WALLS: 148 sq. ft

Floor Plan Created By V1photos.com. Measurements Deamed Highly Reliable But Not Guaranteed.



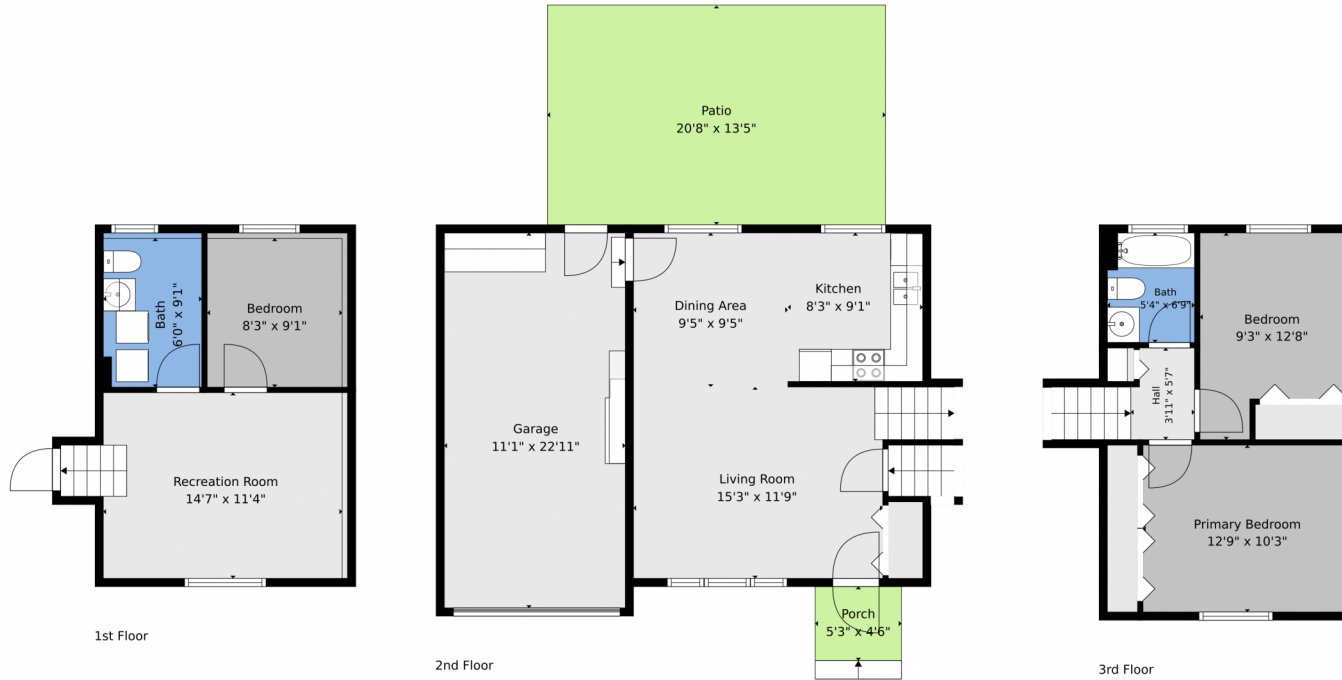
Disclaimer: Sizes and Dimensions are Approximate, Actual May Vary.



**Taylor Haas**  
303-665-7368  
taylorh@coloradorpm.com  
<https://www.coloradorpm.com/available-rental-properties-denver>



# 4935 Montebello Drive, Colorado Springs, CO 80918 – All Levels



1st Floor

2nd Floor

3rd Floor

**TOTAL: 1071 sq. ft**  
1st floor: 325 sq. ft, 2nd floor: 388 sq. ft, 3rd floor: 358 sq. ft  
EXCLUDED AREAS: GARAGE: 254 sq. ft, PORCH: 30 sq. ft, PATIO: 278 sq. ft,  
WALLS: 148 sq. ft

Floor Plan Created By V1photos.com. Measurements Deamed Highly Reliable But Not Guaranteed.



Disclaimer: Sizes and Dimensions are Approximate, Actual May Vary.



**Taylor Haas**

303-665-7368

taylorh@coloradorpm.com

<https://www.coloradorpm.com/available-rental-properties-denver>



Scan code  
for more  
property  
details

