



Single Family



3061 SQFT



6 Beds



4 Baths



2 Car



0.24 Acre



**Eric Ybarra**  
720-810-0761  
eric@harborpropertiesco.com



Scan code  
for more  
property  
details





**TOTAL: 2702 sq. ft**  
Basement: 1170 sq. ft, 1st floor: 1532 sq. ft  
EXCLUDED AREAS: UTILITY: 50 sq. ft, GARAGE: 444 sq. ft, COVERED PATIO: 192 sq. ft,  
FIREPLACE: 11 sq. ft, WALLS: 184 sq. ft

Floor Plan Created By V1photos.com. Measurements Deamed Highly Reliable But Not Guaranteed.



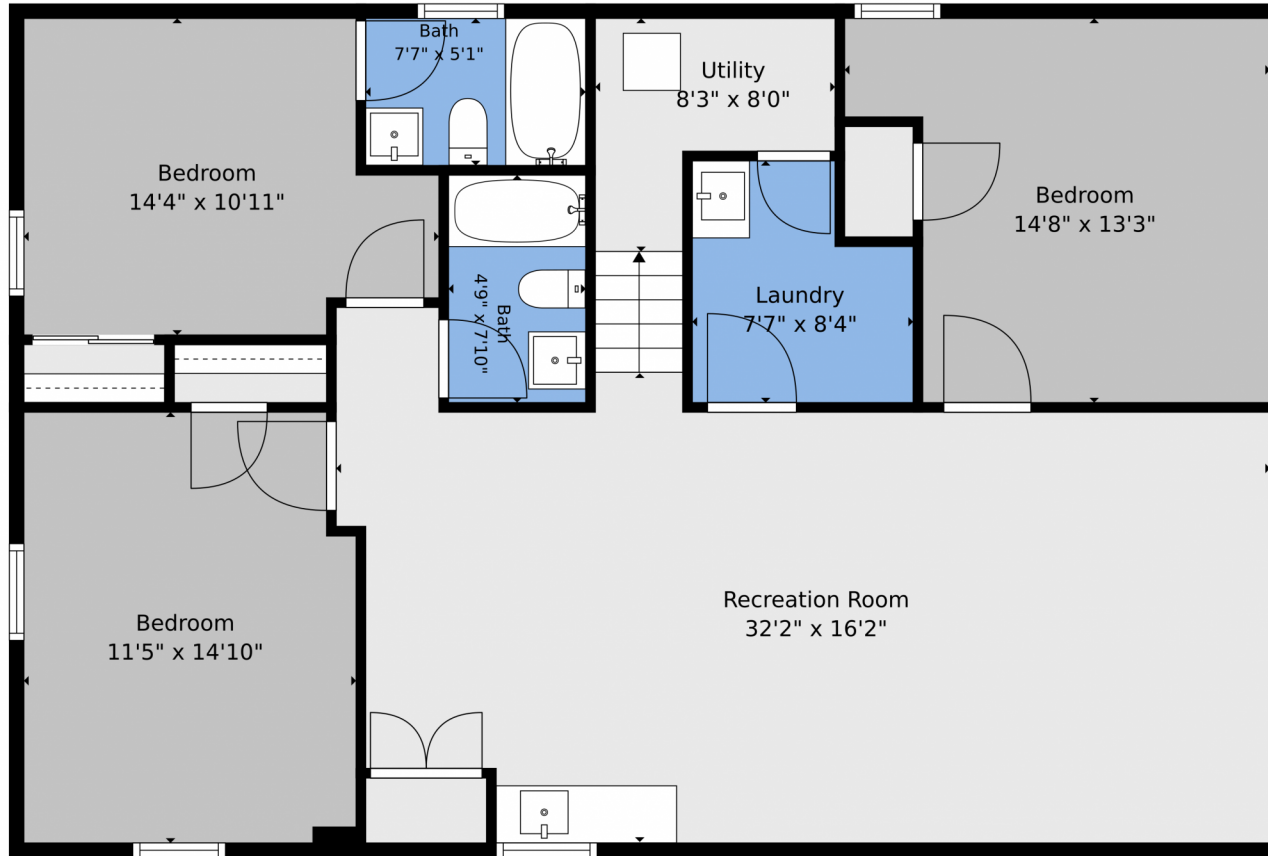
Disclaimer: Sizes and Dimensions are Approximate, Actual May Vary.



**Eric Ybarra**  
720-810-0761  
eric@harborpropertiesco.com



2466 South Krameria Street, Denver, CO 80222 – Basement



**TOTAL: 2702 sq. ft**  
Basement: 1170 sq. ft, 1st floor: 1532 sq. ft  
EXCLUDED AREAS: UTILITY: 50 sq. ft, GARAGE: 444 sq. ft, COVERED PATIO: 192 sq. ft,  
FIREPLACE: 11 sq. ft, WALLS: 184 sq. ft

Floor Plan Created By V1photos.com. Measurements Deamed Highly Reliable But Not Guaranteed.



Disclaimer: Sizes and Dimensions are Approximate, Actual May Vary.



**Eric Ybarra**  
720-810-0761  
eric@harborpropertiesco.com



Scan code  
for more  
property  
details



# 2466 South Krameria Street, Denver, CO 80222 – All Levels



**TOTAL: 2702 sq. ft**  
Basement: 1170 sq. ft, 1st floor: 1532 sq. ft  
EXCLUDED AREAS: UTILITY: 50 sq. ft, GARAGE: 444 sq. ft, COVERED PATIO: 192 sq. ft,  
FIREPLACE: 11 sq. ft, WALLS: 184 sq. ft

Floor Plan Created By V1photos.com. Measurements Deamed Highly Reliable But Not Guaranteed.



Disclaimer: Sizes and Dimensions are Approximate, Actual May Vary.



**Eric Ybarra**  
720-810-0761  
eric@harborpropertiesco.com

