



8430 Sedgewick Drive
 Colorado Springs, CO 80925
 COMMUNITY: The Glen at Widefield



floorplan_single_1



Single Family



2186 SQFT



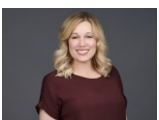
4 Beds



3 Baths



0.12 Acre



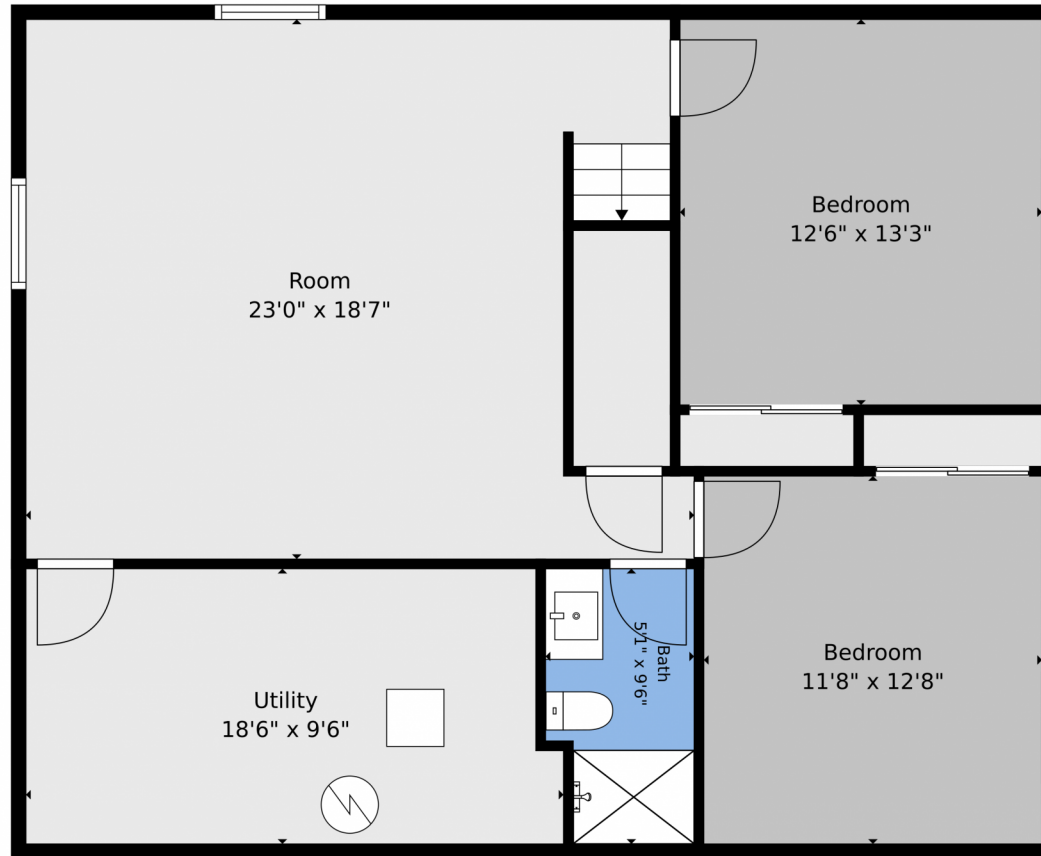
Amanda Moss
 719-213-9324
 amy.mossco@gmail.com



Scan code
 for more
 property
 details



8430 Sedgewick Drive, Colorado Springs, CO 80925 – Lower Level



TOTAL: 1864 sq. ft
Basement: 823 sq. ft, 1st floor: 1041 sq. ft
EXCLUDED AREAS: UTILITY: 169 sq. ft, GARAGE: 406 sq. ft, PATIO: 181 sq. ft,
PORCH: 67 sq. ft, SHED: 56 sq. ft, FIREPLACE: 11 sq. ft,
WALLS: 174 sq. ft

Floor Plan Created By V1photos.com. Measurements Deamed Highly Reliable But Not Guaranteed.



Disclaimer: Sizes and Dimensions are Approximate, Actual May Vary.



Amanda Moss
719-213-9324
amy.mossco@gmail.com



8430 Sedgewick Drive, Colorado Springs, CO 80925 – Main Level



TOTAL: 1864 sq. ft
Basement: 823 sq. ft, 1st floor: 1041 sq. ft
EXCLUDED AREAS: UTILITY: 169 sq. ft, GARAGE: 406 sq. ft, PATIO: 181 sq. ft,
PORCH: 67 sq. ft, SHED: 56 sq. ft, FIREPLACE: 11 sq. ft,
WALLS: 174 sq. ft

Floor Plan Created By V1photos.com. Measurements Deamed Highly Reliable But Not Guaranteed.



Disclaimer: Sizes and Dimensions are Approximate, Actual May Vary.



Amanda Moss
719-213-9324
amy.mossco@gmail.com



8430 Sedgewick Drive, Colorado Springs, CO 80925 – All levels



Basement

1st Floor

TOTAL: 1864 sq. ft
Basement: 823 sq. ft, 1st floor: 1041 sq. ft
EXCLUDED AREAS: UTILITY: 169 sq. ft, GARAGE: 406 sq. ft, PATIO: 181 sq. ft,
PORCH: 67 sq. ft, SHED: 56 sq. ft, FIREPLACE: 11 sq. ft,
WALLS: 174 sq. ft

Floor Plan Created By V1photos.com. Measurements Deamed Highly Reliable But Not Guaranteed.

Disclaimer: Sizes and Dimensions are Approximate, Actual May Vary.



Amanda Moss
719-213-9324
amy.mossco@gmail.com

