



 Single Family

 2978 SQFT

 5 Beds

 2/1 Baths

 2 Car

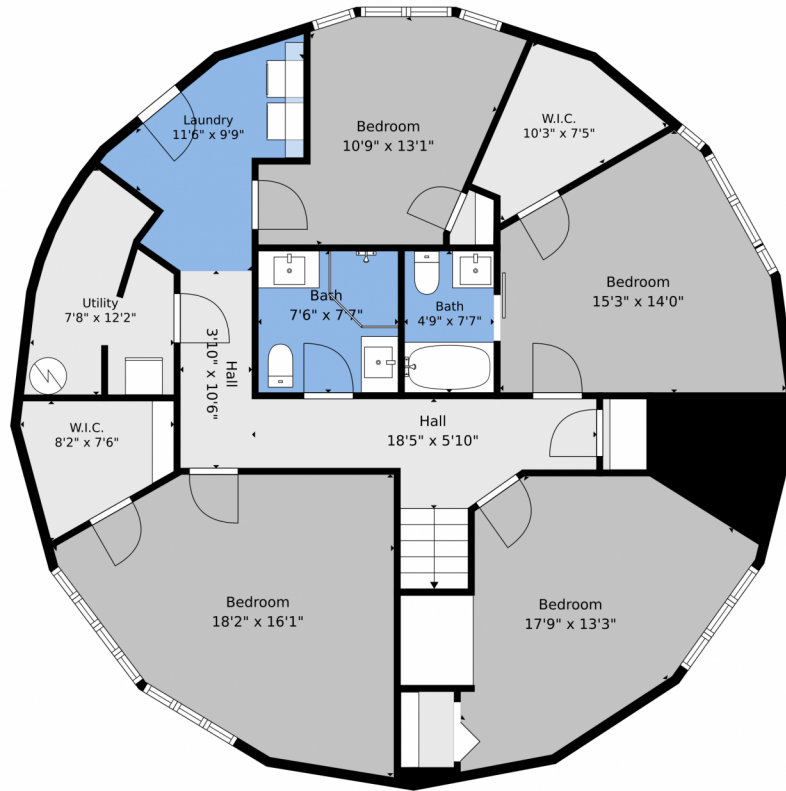
 40 Acre



Matthew Lutz
720-448-3822
matthew.f.lutz@gmail.com



5607 Crawford Gulch Road, Golden, CO 80403 – Lower Level



TOTAL: 2667 sq. ft
Basement: 1229 sq. ft, 1st floor: 1438 sq. ft
EXCLUDED AREAS: UTILITY: 72 sq. ft, BALCONY: 577 sq. ft, WALLS: 138 sq. ft

Floor Plan Created By V1photos.com. Measurements Deamed Highly Reliable But Not Guaranteed.



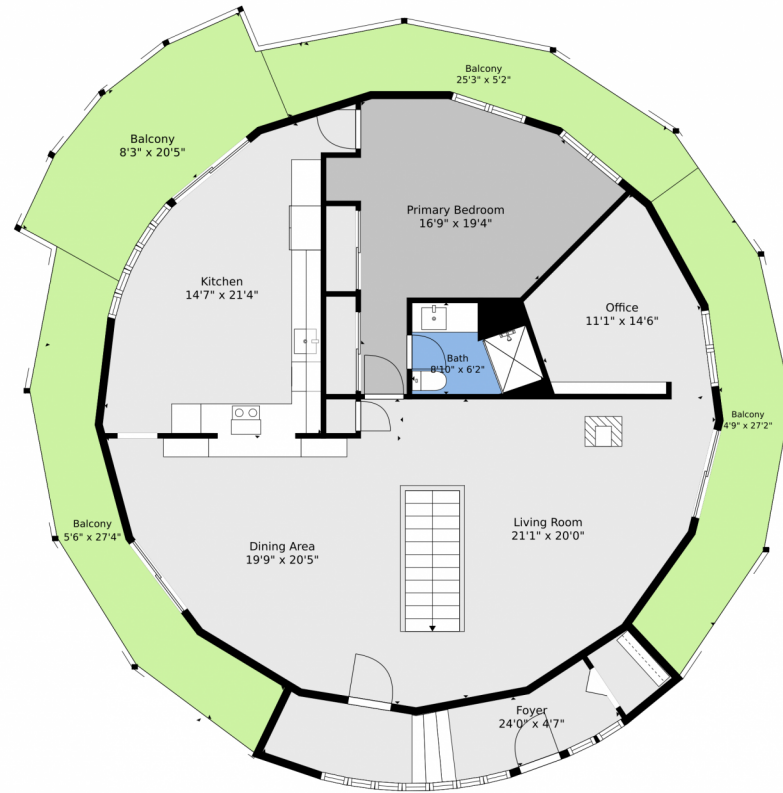
Disclaimer: Sizes and Dimensions are Approximate, Actual May Vary.



Matthew Lutz
720-448-3822
matthew.f.lutz@gmail.com



5607 Crawford Gulch Road, Golden, CO 80403 – Main



TOTAL: 2667 sq. ft
Basement: 1229 sq. ft, 1st floor: 1438 sq. ft
EXCLUDED AREAS: UTILITY: 72 sq. ft, BALCONY: 577 sq. ft, WALLS: 138 sq. ft

Floor Plan Created By V1photos.com. Measurements Deamed Highly Reliable But Not Guaranteed.



Disclaimer: Sizes and Dimensions are Approximate, Actual May Vary.



Matthew Lutz
720-448-3822
matthew.f.lutz@gmail.com



5607 Crawford Gulch Road, Golden, CO 80403 – Detached Garage



TOTAL: 0 sq. ft
1st floor: 0 sq. ft, 2nd floor: 0 sq. ft
EXCLUDED AREAS: STORAGE: 387 sq. ft, GARAGE: 1264 sq. ft, ROOM: 794 sq. ft,
LOW CEILING: 66 sq. ft, HALL: 92 sq. ft, DECK: 514 sq. ft,
WALLS: 220 sq. ft

Floor Plan Created By V1photos.com. Measurements Deamed Highly Reliable But Not Guaranteed.

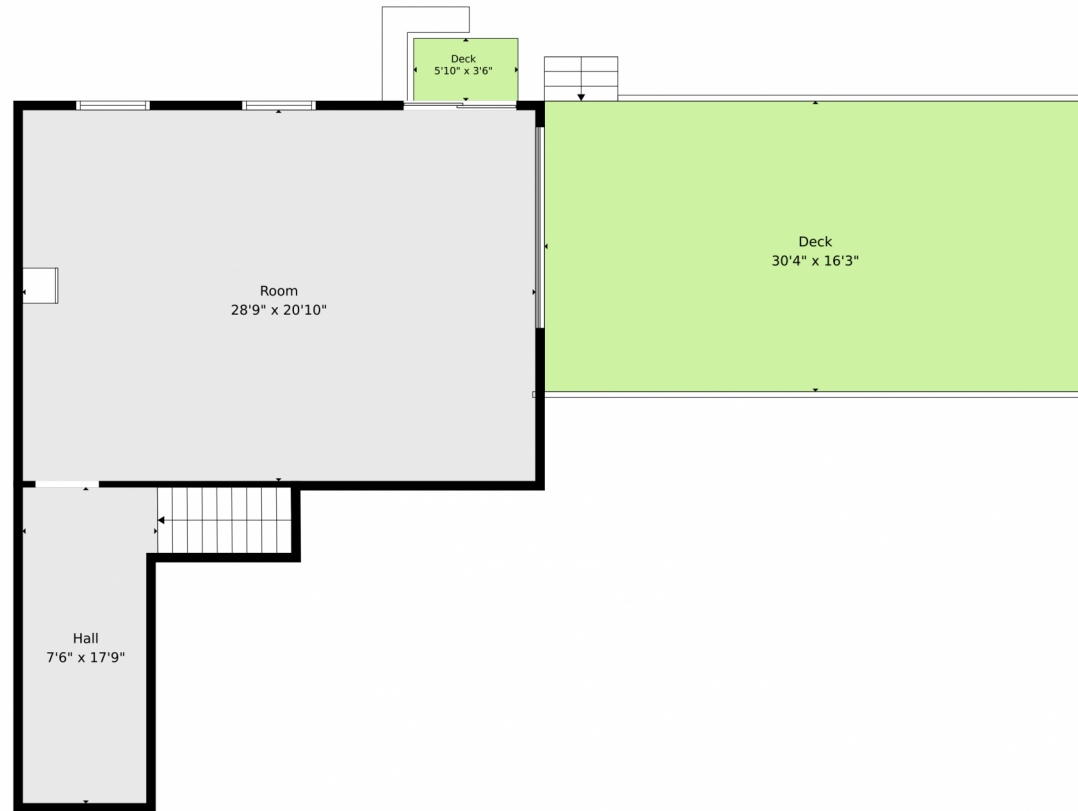
Disclaimer: Sizes and Dimensions are Approximate, Actual May Vary.



Matthew Lutz
720-448-3822
matthew.f.lutz@gmail.com



5607 Crawford Gulch Road, Golden, CO 80403 – Detached Garage



TOTAL: 0 sq. ft
1st floor: 0 sq. ft, 2nd floor: 0 sq. ft
EXCLUDED AREAS: STORAGE: 387 sq. ft, GARAGE: 1264 sq. ft, ROOM: 794 sq. ft,
LOW CEILING: 66 sq. ft, HALL: 92 sq. ft, DECK: 514 sq. ft,
WALLS: 220 sq. ft

Floor Plan Created By V1photos.com. Measurements Deamed Highly Reliable But Not Guaranteed.



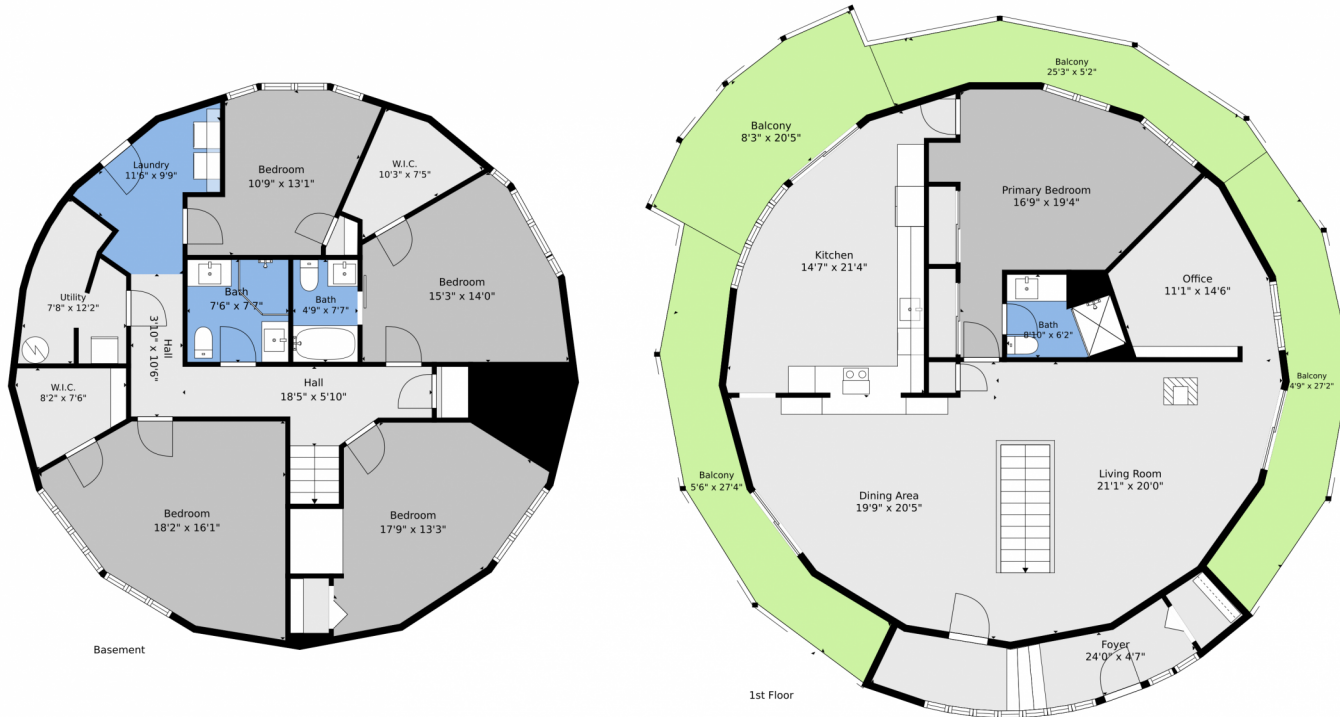
Disclaimer: Sizes and Dimensions are Approximate, Actual May Vary.



Matthew Lutz
720-448-3822
matthew.f.lutz@gmail.com



5607 Crawford Gulch Road, Golden, CO 80403 – All Levels



TOTAL: 2667 sq. ft
Basement: 1229 sq. ft, 1st floor: 1438 sq. ft
EXCLUDED AREAS: UTILITY: 72 sq. ft, BALCONY: 577 sq. ft, WALLS: 138 sq. ft

Floor Plan Created By V1photos.com. Measurements Deamed Highly Reliable But Not Guaranteed.



Disclaimer: Sizes and Dimensions are Approximate, Actual May Vary.



Matthew Lutz
720-448-3822
matthew.f.lutz@gmail.com



Scan code
for more
property
details

