
 Single Family

 3334 SQFT

 5 Beds

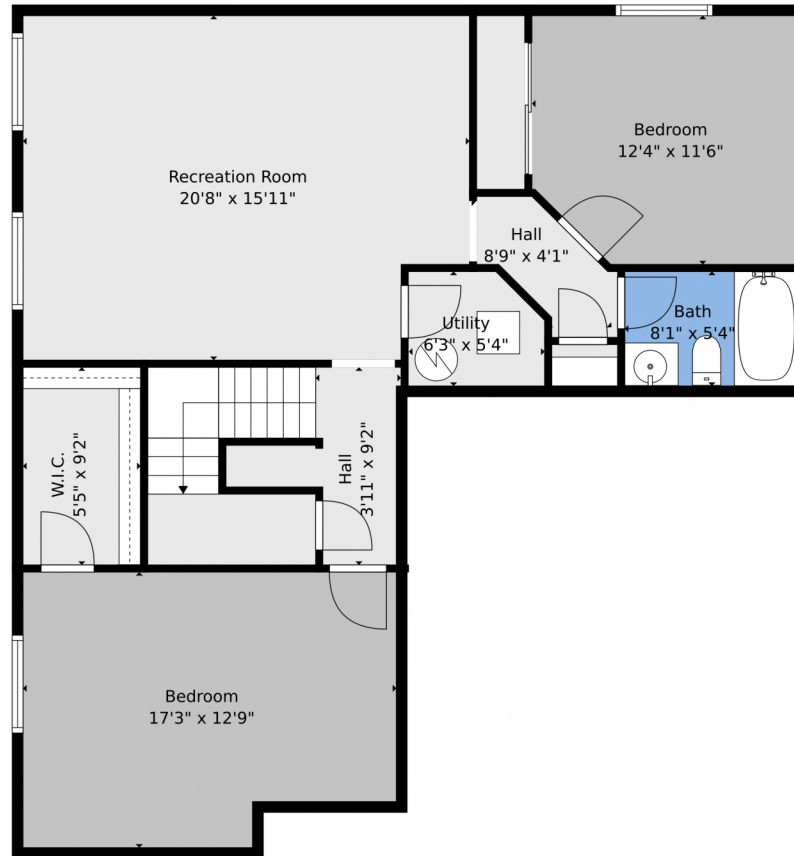
 3/1 Baths



**Taylor Haas**  
303-665-7368  
taylorh@coloradorpm.com  
<https://www.coloradorpm.com/available-rental-properties-denver>



# 6735 Skuna Drive, Colorado Springs, CO 80925 – Lower Level



**TOTAL: 3119 sq. ft**  
Basement: 934 sq. ft, 1st floor: 1011 sq. ft, 2nd floor: 1174 sq. ft  
EXCLUDED AREAS: UTILITY: 31 sq. ft, GARAGE: 473 sq. ft, PORCH: 78 sq. ft,  
PATIO: 141 sq. ft, OPEN TO BELOW: 241 sq. ft, WALLS: 260 sq. ft

Floor Plan Created By V1photos.com. Measurements Deamed Highly Reliable But Not Guaranteed.



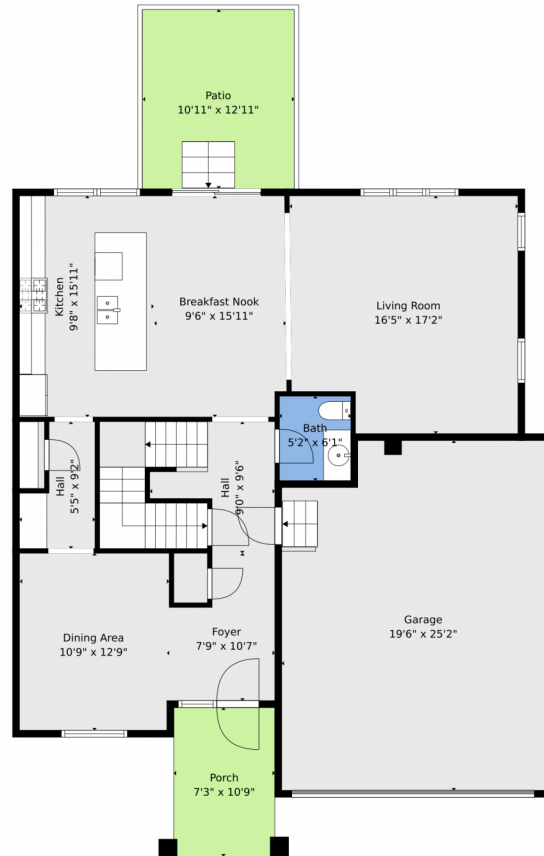
Disclaimer: Sizes and Dimensions are Approximate, Actual May Vary.



**Taylor Haas**  
303-665-7368  
taylorh@coloradorpm.com  
<https://www.coloradorpm.com/available-rental-properties-denver>



# 6735 Skuna Drive, Colorado Springs, CO 80925 – Main Level



**TOTAL: 3119 sq. ft**

Basement: 934 sq. ft, 1st floor: 1011 sq. ft, 2nd floor: 1174 sq. ft  
EXCLUDED AREAS: UTILITY: 31 sq. ft, GARAGE: 473 sq. ft, PORCH: 78 sq. ft,  
PATIO: 141 sq. ft, OPEN TO BELOW: 241 sq. ft, WALLS: 260 sq. ft

Floor Plan Created By V1photos.com. Measurements Deamed Highly Reliable But Not Guaranteed.



Disclaimer: Sizes and Dimensions are Approximate, Actual May Vary.



**Taylor Haas**

303-665-7368

taylorh@coloradorpm.com

<https://www.coloradorpm.com/available-rental-properties-denver>



Scan code  
for more  
property  
details



# 6735 Skuna Drive, Colorado Springs, CO 80925 – Upper Level



**TOTAL: 3119 sq. ft**

Basement: 934 sq. ft, 1st floor: 1011 sq. ft, 2nd floor: 1174 sq. ft  
EXCLUDED AREAS: UTILITY: 31 sq. ft, GARAGE: 473 sq. ft, PORCH: 78 sq. ft,  
PATIO: 141 sq. ft, OPEN TO BELOW: 241 sq. ft, WALLS: 260 sq. ft

Floor Plan Created By V1photos.com. Measurements Deamed Highly Reliable But Not Guaranteed.



Disclaimer: Sizes and Dimensions are Approximate, Actual May Vary.



**Taylor Haas**

303-665-7368

taylorh@coloradorpm.com

<https://www.coloradorpm.com/available-rental-properties-denver>



Scan code  
for more  
property  
details



# 6735 Skuna Drive, Colorado Springs, CO 80925 – All Levels



**TOTAL: 3119 sq. ft**  
Basement: 934 sq. ft, 1st floor: 1011 sq. ft, 2nd floor: 1174 sq. ft  
EXCLUDED AREAS: UTILITY: 31 sq. ft, GARAGE: 473 sq. ft, PORCH: 78 sq. ft,  
PATIO: 141 sq. ft, OPEN TO BELOW: 241 sq. ft, WALLS: 260 sq. ft

Floor Plan Created By V1photos.com. Measurements Deamed Highly Reliable But Not Guaranteed.



Disclaimer: Sizes and Dimensions are Approximate, Actual May Vary.



Taylor Haas

303-665-7368

taylorh@coloradorpm.com

<https://www.coloradorpm.com/available-rental-properties-denver>



Scan code  
for more  
property  
details

