



55470 East 27th Place
Strasburg, CO 80136



Single Family



1521 SQFT



4 Beds



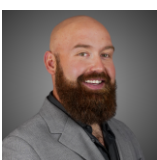
2 Baths



2 Car



0.17 Acre



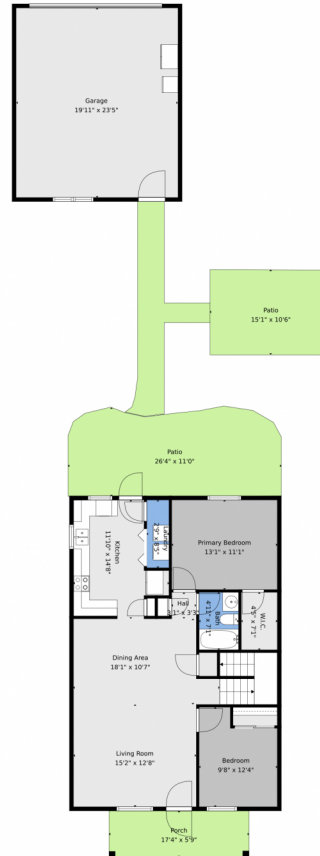
David Hamrick
720-254-0464
hamrickdavid@gmail.com



Scan code
for more
property
details



55470 East 27th Place, Strasburg, CO 80136 – Main Level



TOTAL: 1459 sq. ft
1st floor: 955 sq. ft, 2nd floor: 504 sq. ft
EXCLUDED AREAS: PORCH: 99 sq. ft, PATIO: 429 sq. ft, GARAGE: 468 sq. ft,
LOW CEILING: 114 sq. ft, OPEN TO BELOW: 7 sq. ft, WALLS: 164 sq. ft

Floor Plan Created By V1photos.com. Measurements Deamed Highly Reliable But Not Guaranteed.



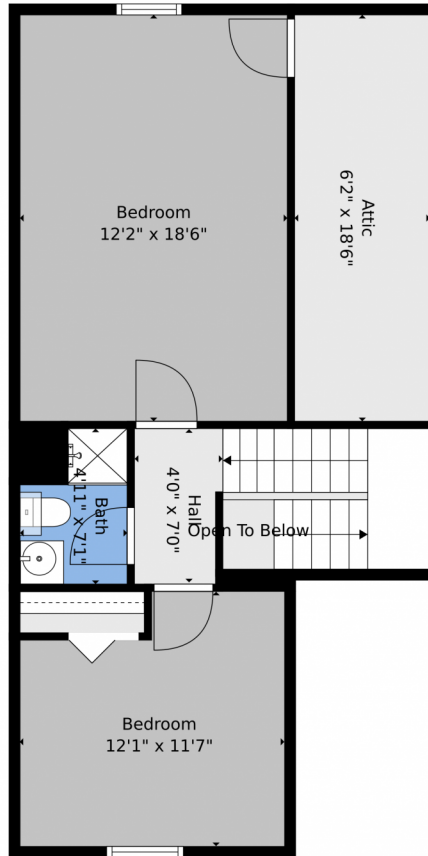
Disclaimer: Sizes and Dimensions are Approximate, Actual May Vary.



David Hamrick
720-254-0464
hamrickdavid@gmail.com



55470 East 27th Place, Strasburg, CO 80136 – 2nd Level



TOTAL: 1459 sq. ft
1st floor: 955 sq. ft, 2nd floor: 504 sq. ft
EXCLUDED AREAS: PORCH: 99 sq. ft, PATIO: 429 sq. ft, GARAGE: 468 sq. ft,
LOW CEILING: 114 sq. ft, OPEN TO BELOW: 7 sq. ft, WALLS: 164 sq. ft

Floor Plan Created By V1photos.com. Measurements Deamed Highly Reliable But Not Guaranteed.



Disclaimer: Sizes and Dimensions are Approximate, Actual May Vary.



David Hamrick
720-254-0464
hamrickdavid@gmail.com



55470 East 27th Place, Strasburg, CO 80136 – All Levels



TOTAL: 1459 sq. ft
1st floor: 955 sq. ft, 2nd floor: 504 sq. ft
EXCLUDED AREAS: PORCH: 99 sq. ft, PATIO: 429 sq. ft, GARAGE: 468 sq. ft,
LOW CEILING: 114 sq. ft, OPEN TO BELOW: 7 sq. ft, WALLS: 164 sq. ft

Floor Plan Created By V1photos.com. Measurements Deamed Highly Reliable But Not Guaranteed.



Disclaimer: Sizes and Dimensions are Approximate, Actual May Vary.



David Hamrick
720-254-0464
hamrickdavid@gmail.com

