



6895 Quicksilver Drive  
Colorado Springs, CO 80922



floorplan\_single\_1



Single Family

2738 SQFT

0.16 Acre



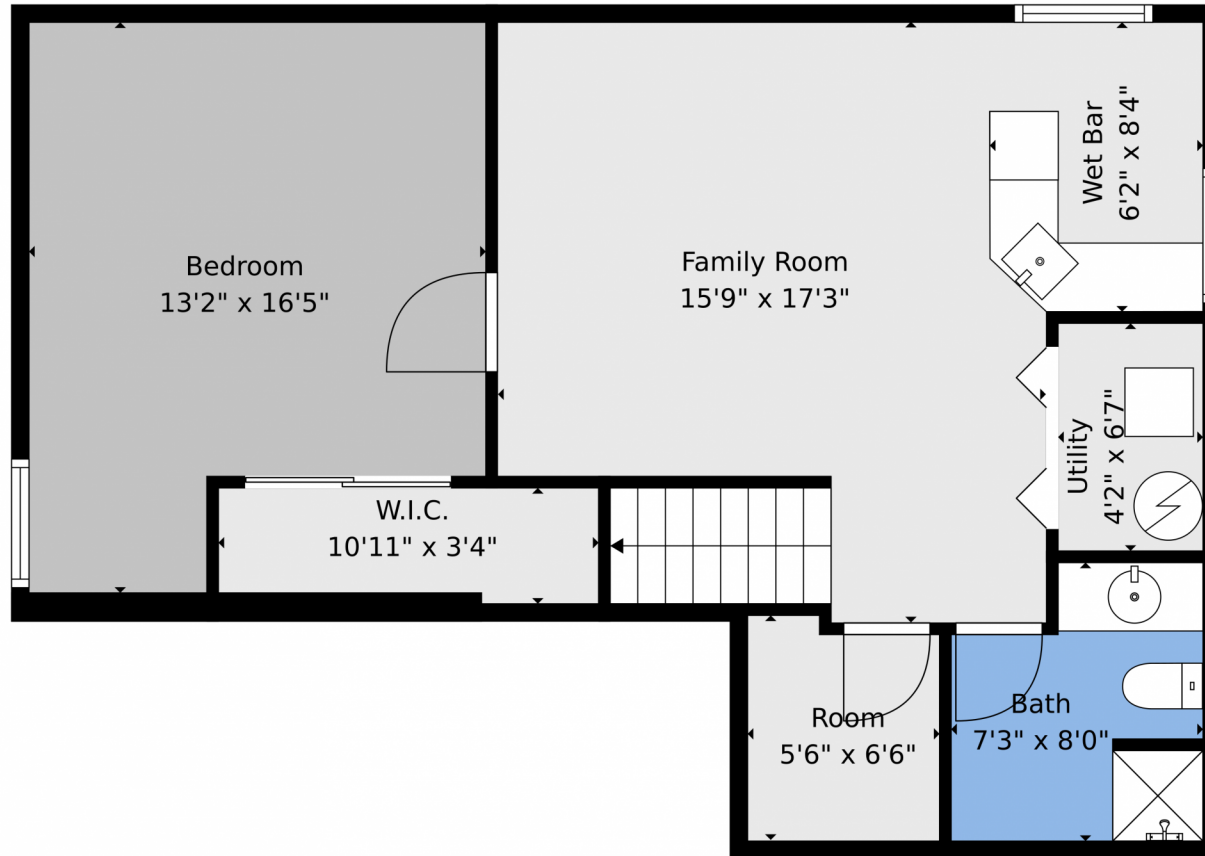
**Lance Thibault**  
719-331-1067  
lance.thibault@remax.net  
<https://talk2tbo.com>



Scan code  
for more  
property  
details



6895 Quicksilver Drive, Colorado Springs, CO 80922 – Lower Level



**TOTAL: 2336 sq. ft**

Basement: 627 sq. ft, 1st floor: 765 sq. ft, 2nd floor: 944 sq. ft  
EXCLUDED AREAS: UTILITY: 27 sq. ft, GARAGE: 383 sq. ft, STORAGE: 52 sq. ft,  
DECK: 344 sq. ft, PORCH: 36 sq. ft, FIREPLACE: 12 sq. ft,  
OPEN TO BELOW: 170 sq. ft, WALLS: 233 sq. ft

Floor Plan Created By V1photos.com. Measurements Deamed Highly Reliable But Not Guaranteed.

Disclaimer: Sizes and Dimensions are Approximate, Actual May Vary.



**Lance Thibault**  
719-331-1067  
lance.thibault@remax.net  
<https://talk2tbo.com>



# 6895 Quicksilver Drive, Colorado Springs, CO 80922 — Main Level



**TOTAL: 2336 sq. ft**

Basement: 627 sq. ft, 1st floor: 765 sq. ft, 2nd floor: 944 sq. ft  
EXCLUDED AREAS: UTILITY: 27 sq. ft, GARAGE: 383 sq. ft, STORAGE: 52 sq. ft,  
DECK: 344 sq. ft, PORCH: 36 sq. ft, FIREPLACE: 12 sq. ft,  
OPEN TO BELOW: 170 sq. ft, WALLS: 233 sq. ft

Floor Plan Created By V1photos.com. Measurements Deamed Highly Reliable But Not Guaranteed.



Disclaimer: Sizes and Dimensions are Approximate, Actual May Vary.



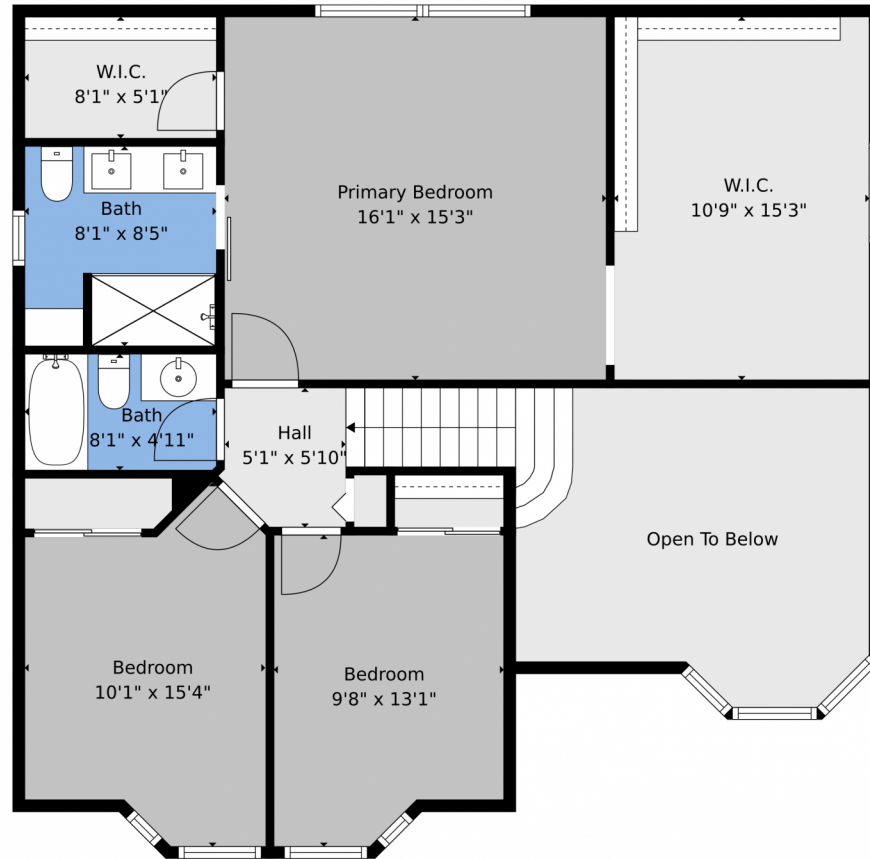
**Lance Thibault**  
719-331-1067  
lance.thibault@remax.net  
<https://talk2tbo.com>



Scan code  
for more  
property  
details



6895 Quicksilver Drive, Colorado Springs, CO 80922 – Upper Level



**TOTAL: 2336 sq. ft**  
Basement: 627 sq. ft, 1st floor: 765 sq. ft, 2nd floor: 944 sq. ft  
EXCLUDED AREAS: UTILITY: 27 sq. ft, GARAGE: 383 sq. ft, STORAGE: 52 sq. ft,  
DECK: 344 sq. ft, PORCH: 36 sq. ft, FIREPLACE: 12 sq. ft,  
OPEN TO BELOW: 170 sq. ft, WALLS: 233 sq. ft

Floor Plan Created By V1photos.com. Measurements Deamed Highly Reliable But Not Guaranteed.



Disclaimer: Sizes and Dimensions are Approximate, Actual May Vary.



**Lance Thibault**  
719-331-1067  
lance.thibault@remax.net  
<https://talk2tbo.com>



# 6895 Quicksilver Drive, Colorado Springs, CO 80922 – All Levels



**TOTAL: 2336 sq. ft**  
Basement: 627 sq. ft, 1st floor: 765 sq. ft, 2nd floor: 944 sq. ft  
EXCLUDED AREAS: UTILITY: 27 sq. ft, GARAGE: 383 sq. ft, STORAGE: 52 sq. ft,  
DECK: 344 sq. ft, PORCH: 36 sq. ft, FIREPLACE: 12 sq. ft,  
OPEN TO BELOW: 170 sq. ft, WALLS: 233 sq. ft

Floor Plan Created By V1photos.com. Measurements Deamed Highly Reliable But Not Guaranteed.



Disclaimer: Sizes and Dimensions are Approximate, Actual May Vary.



**Lance Thibault**  
719-331-1067  
lance.thibault@remax.net  
<https://talk2tbo.com>



Scan code  
for more  
property  
details

