



835 Hartford Drive
 Boulder, CO 80305
 COMMUNITY: Table Mesa

MLS # 1058226
 PRICE \$1,125,000



Single Family



2004 SQFT



4 Beds



2 Baths



2 Car



0.16 Acre

PROPERTY DETAILS

Fantastic Table Mesa location just a few blocks from open space trails and Bear Creek elementary. Bill Bower park just a few house away. Quiet street with easy access to bus lines and shopping. Clean 4 bedroom 2 bath bilevel home with attached 2 car garage. Floor plan allows for great separation of living spaces. 2 bedrooms, 1 bath and living room on upper floor and 2 bedrooms, 3/4 bath and family room on lower level with walk out to backyard. Lower level was updated in 2014. Nice little partially covered patio off entry. Large deck off lower level family room. Easy access to, skunk canyon trail and NCAR trail just to the west a few blocks. Home has low maintenance metal exterior siding, vinyl double pane windows, extra wide driveway, on demand hot water heater and high efficiency furnace.



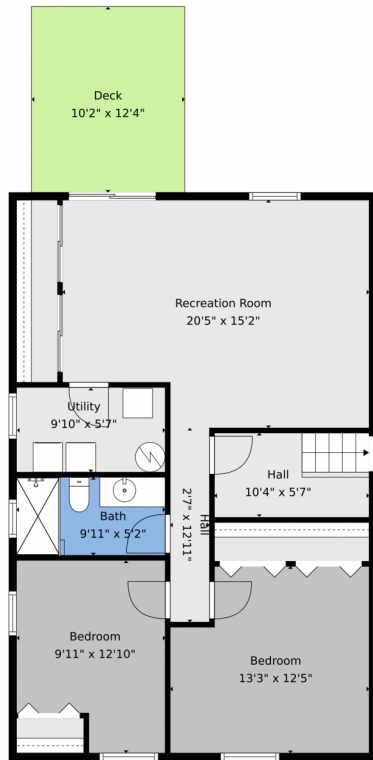
Pete Abel
 303-594-8319
 peteabelsold4u@boulderco.com



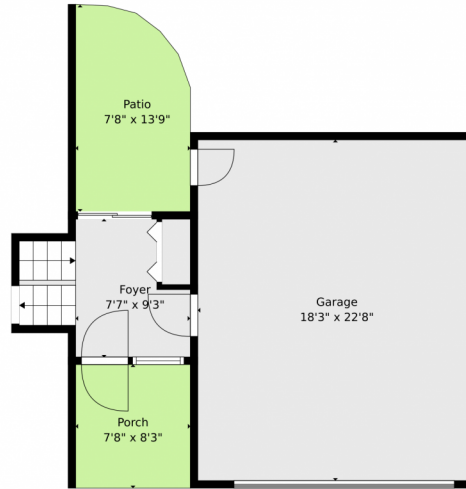
Scan code
 for more
 property
 details



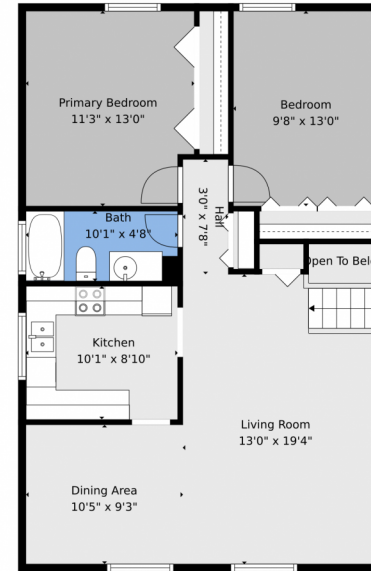
835 Hartford Drive, Boulder, CO 80305 – All Levels



1st Floor



2nd Floor



3rd Floor

TOTAL: 1753 sq. ft
1st floor: 809 sq. ft, 2nd floor: 91 sq. ft, 3rd floor: 853 sq. ft
EXCLUDED AREAS: UTILITY: 56 sq. ft, DECK: 127 sq. ft, PORCH: 63 sq. ft,
PATIO: 96 sq. ft, GARAGE: 416 sq. ft, OPEN TO BELOW: 12 sq. ft,
WALLS: 193 sq. ft

Floor Plan Created By V1photos.com. Measurements Deamed Highly Reliable But Not Guaranteed.



Disclaimer: Sizes and Dimensions are Approximate, Actual May Vary.



Pete Abel
303-594-8319
peteabelsold4u@boulderco.com



Scan code
for more
property
details

