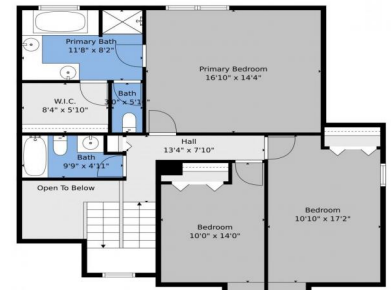




floorplan\_single.2



Single Family

2897 SQFT

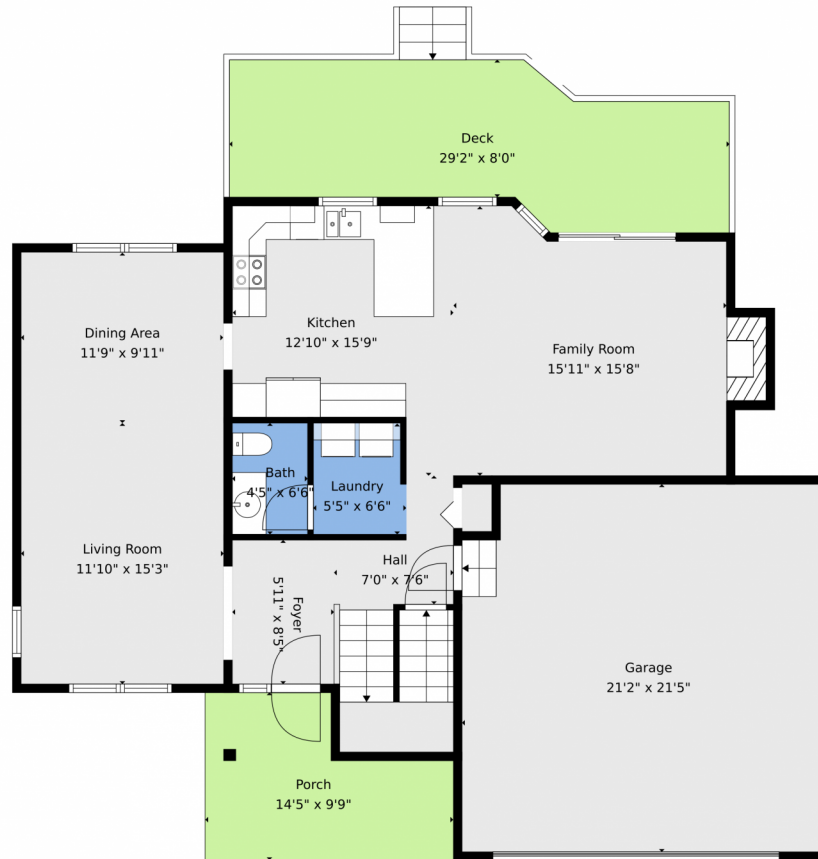
5 Beds

3 Baths



**Taylor Haas**  
 303-665-7368  
 taylorh@coloradorpm.com  
<https://www.coloradorpm.com/available-rental-properties-denver>





**TOTAL: 2651 sq. ft**  
Basement: 773 sq. ft, 1st floor: 933 sq. ft, 2nd floor: 945 sq. ft  
EXCLUDED AREAS: UTILITY: 35 sq. ft, ROOM: 25 sq. ft, UNDEFINED: 6 sq. ft,  
PORCH: 114 sq. ft, DECK: 232 sq. ft, GARAGE: 447 sq. ft,  
FIREPLACE: 14 sq. ft, OPEN TO BELOW: 49 sq. ft, WALLS: 235 sq. ft

Floor Plan Created By V1photos.com. Measurements Deamed Highly Reliable But Not Guaranteed.

Disclaimer: Sizes and Dimensions are Approximate, Actual May Vary.

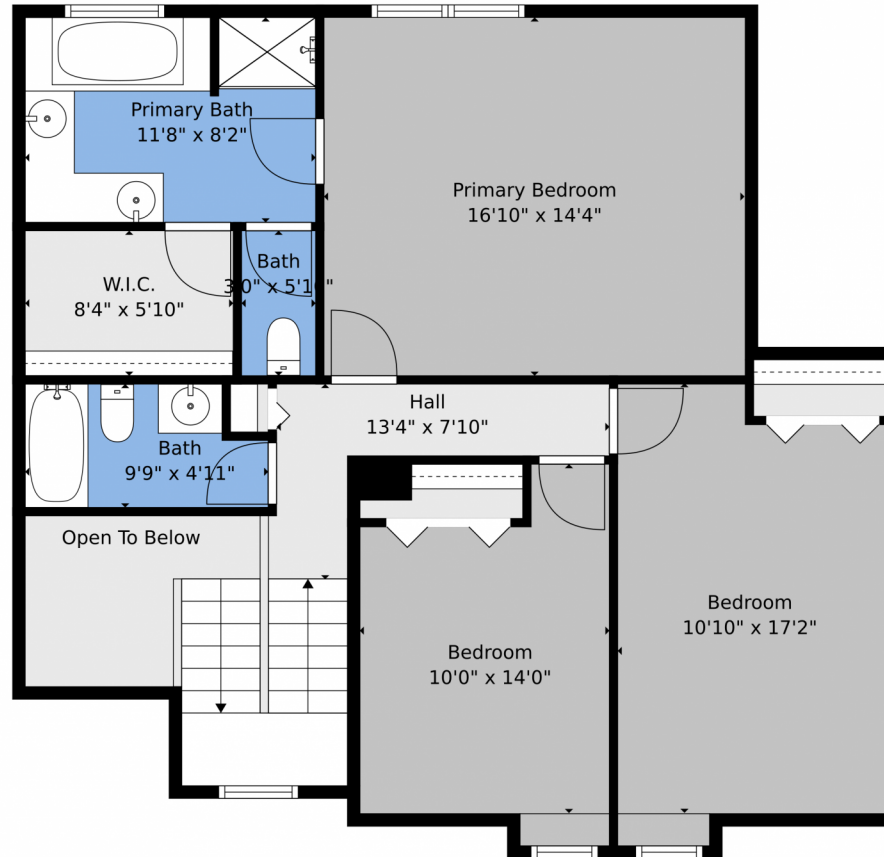


**Taylor Haas**  
303-665-7368  
taylorh@coloradorpm.com  
<https://www.coloradorpm.com/available-rental-properties-denver>



Scan code  
for more  
property  
details

7338 Allens Park Dr, Colorado Springs, CO 80922 – 2nd Level



**TOTAL: 2651 sq. ft**  
Basement: 773 sq. ft, 1st floor: 933 sq. ft, 2nd floor: 945 sq. ft  
EXCLUDED AREAS: UTILITY: 35 sq. ft, ROOM: 25 sq. ft, UNDEFINED: 6 sq. ft,  
PORCH: 114 sq. ft, DECK: 232 sq. ft, GARAGE: 447 sq. ft,  
FIREPLACE: 14 sq. ft, OPEN TO BELOW: 49 sq. ft, WALLS: 235 sq. ft

Floor Plan Created By V1photos.com. Measurements Deamed Highly Reliable But Not Guaranteed.

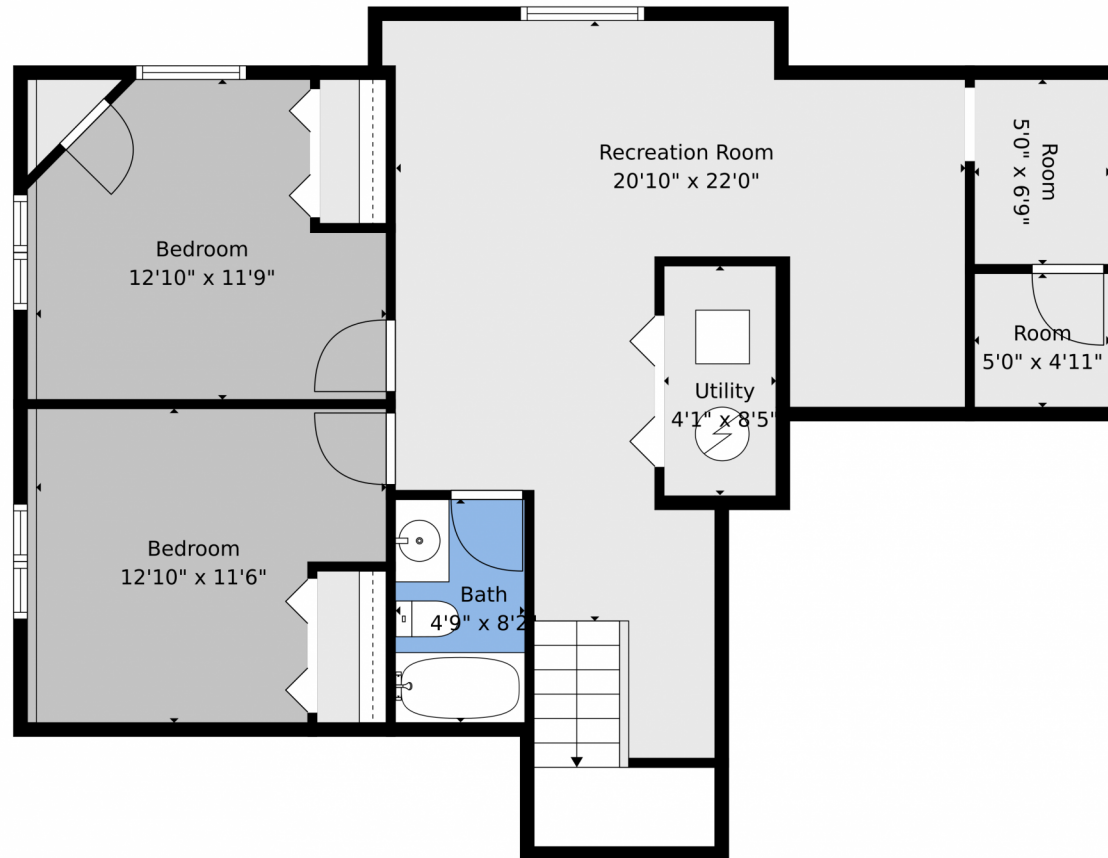


Disclaimer: Sizes and Dimensions are Approximate, Actual May Vary.



**Taylor Haas**  
303-665-7368  
taylorh@coloradorpm.com  
<https://www.coloradorpm.com/available-rental-properties-denver>





**TOTAL: 2651 sq. ft**  
Basement: 773 sq. ft, 1st floor: 933 sq. ft, 2nd floor: 945 sq. ft  
EXCLUDED AREAS: UTILITY: 35 sq. ft, ROOM: 25 sq. ft, UNDEFINED: 6 sq. ft,  
PORCH: 114 sq. ft, DECK: 232 sq. ft, GARAGE: 447 sq. ft,  
FIREPLACE: 14 sq. ft, OPEN TO BELOW: 49 sq. ft, WALLS: 235 sq. ft

Floor Plan Created By V1photos.com. Measurements Deamed Highly Reliable But Not Guaranteed.



Disclaimer: Sizes and Dimensions are Approximate, Actual May Vary.



**Taylor Haas**  
303-665-7368  
taylorh@coloradorpm.com  
<https://www.coloradorpm.com/available-rental-properties-denver>



# 7338 Allens Park Dr, Colorado Springs, CO 80922 – All Levels



**TOTAL: 2651 sq. ft**  
Basement: 773 sq. ft, 1st floor: 933 sq. ft, 2nd floor: 945 sq. ft  
EXCLUDED AREAS: UTILITY: 35 sq. ft, ROOM: 25 sq. ft, UNDEFINED: 6 sq. ft,  
PORCH: 114 sq. ft, DECK: 232 sq. ft, GARAGE: 447 sq. ft,  
FIREPLACE: 14 sq. ft, OPEN TO BELOW: 49 sq. ft, WALLS: 235 sq. ft

Floor Plan Created By V1photos.com. Measurements Deamed Highly Reliable But Not Guaranteed.



Disclaimer: Sizes and Dimensions are Approximate, Actual May Vary.



**Taylor Haas**

303-665-7368

taylorh@coloradorpm.com

<https://www.coloradorpm.com/available-rental-properties-denver>



Scan code  
for more  
property  
details

