



Single Family



2600 SQFT



4 Beds



2/1 Baths



2 Car



0.23 Acre

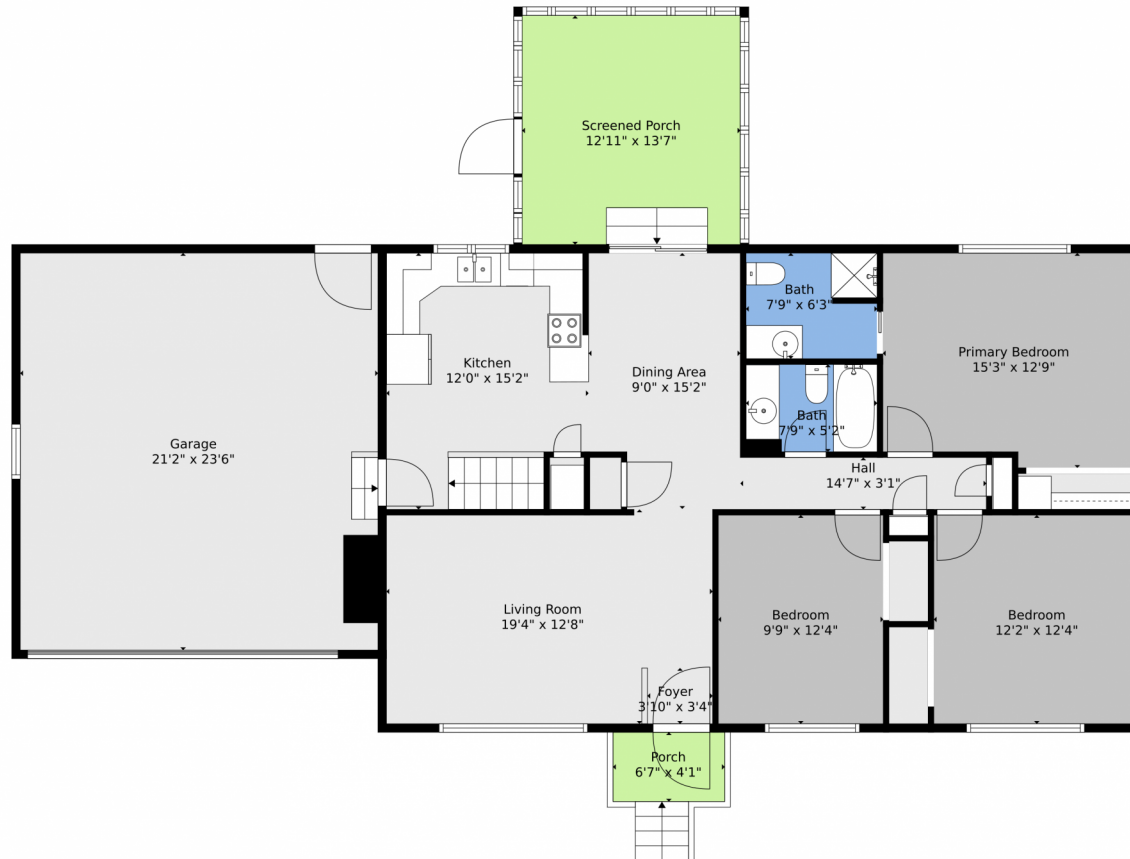


Lindsey Crisanti
970-420-4498
lcrisanti@thegroupinc.com



Scan code
for more
property
details





TOTAL: 2387 sq. ft
Basement: 1143 sq. ft, 1st floor: 1244 sq. ft
EXCLUDED AREAS: ROOM: 77 sq. ft, UTILITY: 26 sq. ft, FIREPLACE: 16 sq. ft,
GARAGE: 498 sq. ft, SCREENED PORCH: 175 sq. ft, PORCH: 27 sq. ft,
WALLS: 199 sq. ft

Floor Plan Created By V1photos.com. Measurements Deamed Highly Reliable But Not Guaranteed.



Disclaimer: Sizes and Dimensions are Approximate, Actual May Vary.



Lindsey Crisanti
970-420-4498
lcrisanti@thegroupinc.com



2428 Atwood Street, Longmont, CO 80501 – Lower Level



TOTAL: 2387 sq. ft
Basement: 1143 sq. ft, 1st floor: 1244 sq. ft
EXCLUDED AREAS: ROOM: 77 sq. ft, UTILITY: 26 sq. ft, FIREPLACE: 16 sq. ft,
GARAGE: 498 sq. ft, SCREENED PORCH: 175 sq. ft, PORCH: 27 sq. ft,
WALLS: 199 sq. ft

Floor Plan Created By V1photos.com. Measurements Deamed Highly Reliable But Not Guaranteed.



Disclaimer: Sizes and Dimensions are Approximate, Actual May Vary.



Lindsey Crisanti
970-420-4498
lcrisanti@thegroupinc.com



2428 Atwood Street, Longmont, CO 80501 – All Levels



TOTAL: 2387 sq. ft
Basement: 1143 sq. ft, 1st floor: 1244 sq. ft
EXCLUDED AREAS: ROOM: 77 sq. ft, UTILITY: 26 sq. ft, FIREPLACE: 16 sq. ft,
GARAGE: 498 sq. ft, SCREENED PORCH: 175 sq. ft, PORCH: 27 sq. ft,
WALLS: 199 sq. ft

Floor Plan Created By V1photos.com. Measurements Deamed Highly Reliable But Not Guaranteed.



Disclaimer: Sizes and Dimensions are Approximate, Actual May Vary.



Lindsey Crisanti
970-420-4498
lcrisanti@thegroupinc.com

