




24073 Peak Drive
Conifer, CO 80433

COMMUNITY: Riley Peak between Richmond Hill Corridor and Pleasant Park Corridor



 Single Family

 1052 SQFT

 5.28 Acre



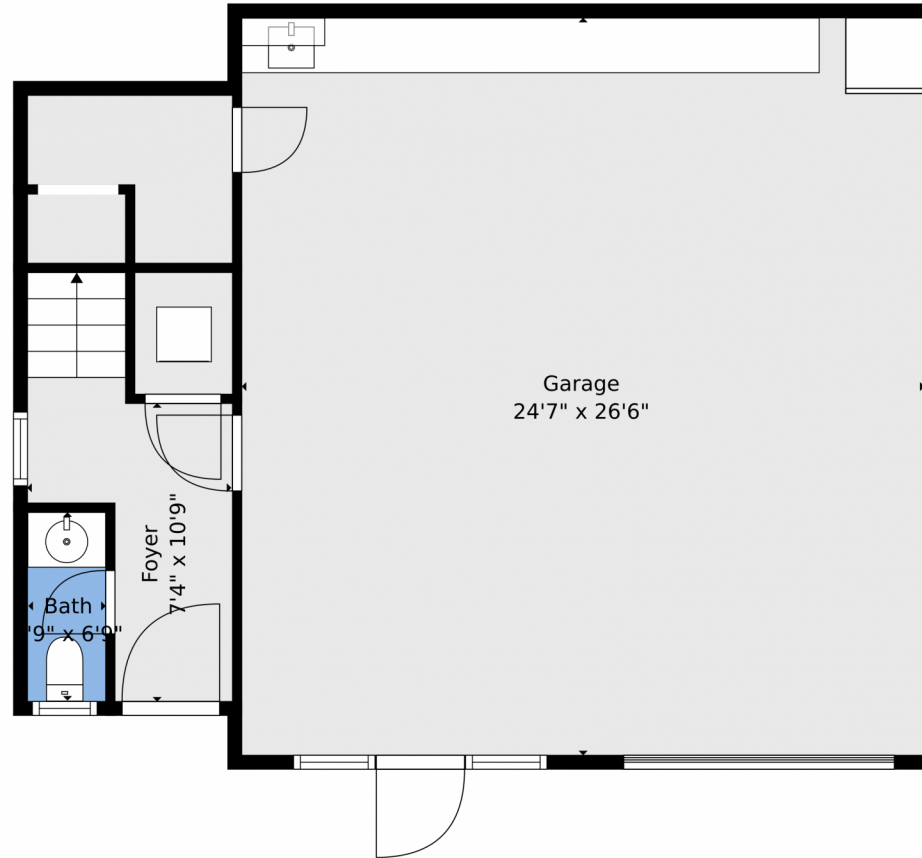
Toby Hillman
720-261-6064
hillmanrealestateservices@hotmail.com
<http://www.realtortobyhillman.com>



Scan code
for more
property
details



24073 Peak Drive, Conifer, CO 80433 – Lower Level



TOTAL: 906 sq. ft
1st floor: 127 sq. ft, 2nd floor: 779 sq. ft
EXCLUDED AREAS: GARAGE: 652 sq. ft, UNDEFINED: 34 sq. ft, DECK: 241 sq. ft,
WALLS: 127 sq. ft

Floor Plan Created By V1photos.com. Measurements Deamed Highly Reliable But Not Guaranteed.

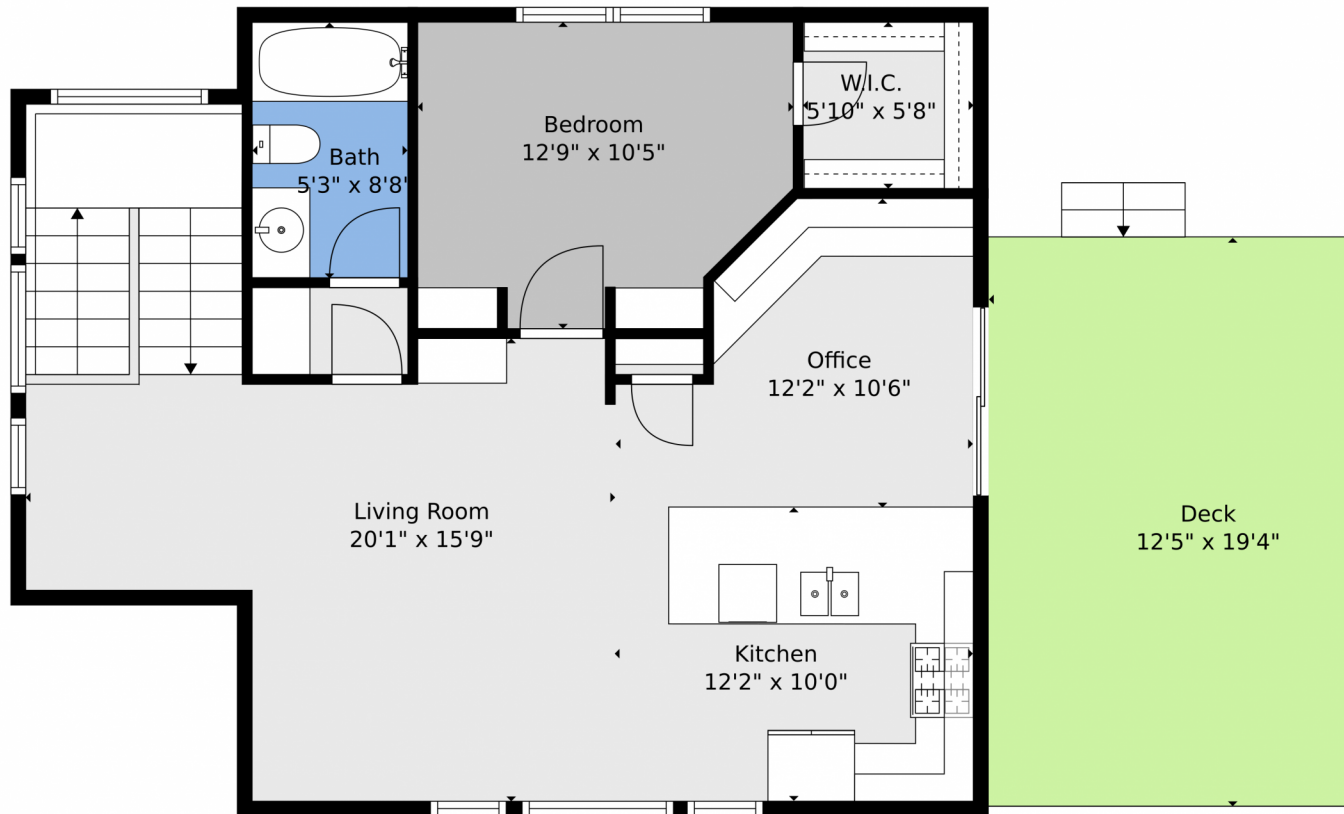


Disclaimer: Sizes and Dimensions are Approximate, Actual May Vary.



Toby Hillman
720-261-6064
hillmanrealestateservices@hotmail.com
<http://www.realtortobyhillman.com>





TOTAL: 906 sq. ft
1st floor: 127 sq. ft, 2nd floor: 779 sq. ft
EXCLUDED AREAS: GARAGE: 652 sq. ft, UNDEFINED: 34 sq. ft, DECK: 241 sq. ft,
WALLS: 127 sq. ft

Floor Plan Created By V1photos.com. Measurements Deamed Highly Reliable But Not Guaranteed.



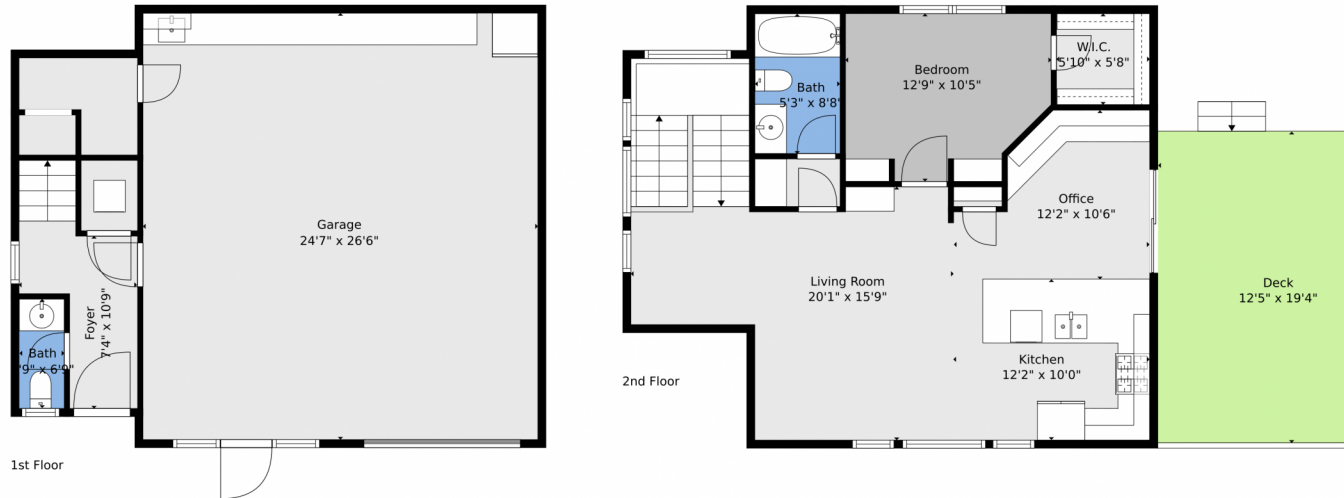
Disclaimer: Sizes and Dimensions are Approximate, Actual May Vary.



Toby Hillman
720-261-6064
hillmanrealestateservices@hotmail.com
<http://www.realtortobyhillman.com>



24073 Peak Drive, Conifer, CO 80433 – All Levels



TOTAL: 906 sq. ft
1st floor: 127 sq. ft, 2nd floor: 779 sq. ft
EXCLUDED AREAS: GARAGE: 652 sq. ft, UNDEFINED: 34 sq. ft, DECK: 241 sq. ft,
WALLS: 127 sq. ft

Floor Plan Created By V1photos.com. Measurements Deamed Highly Reliable But Not Guaranteed.



Disclaimer: Sizes and Dimensions are Approximate, Actual May Vary.



Toby Hillman
720-261-6064
hillmanrealestateservices@hotmail.com
<http://www.realtortobyhillman.com>

