




4115 South Vincennes Court  
Denver, CO 80237

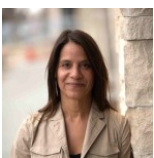


 Single Family

 2407 SQFT

 4 Beds

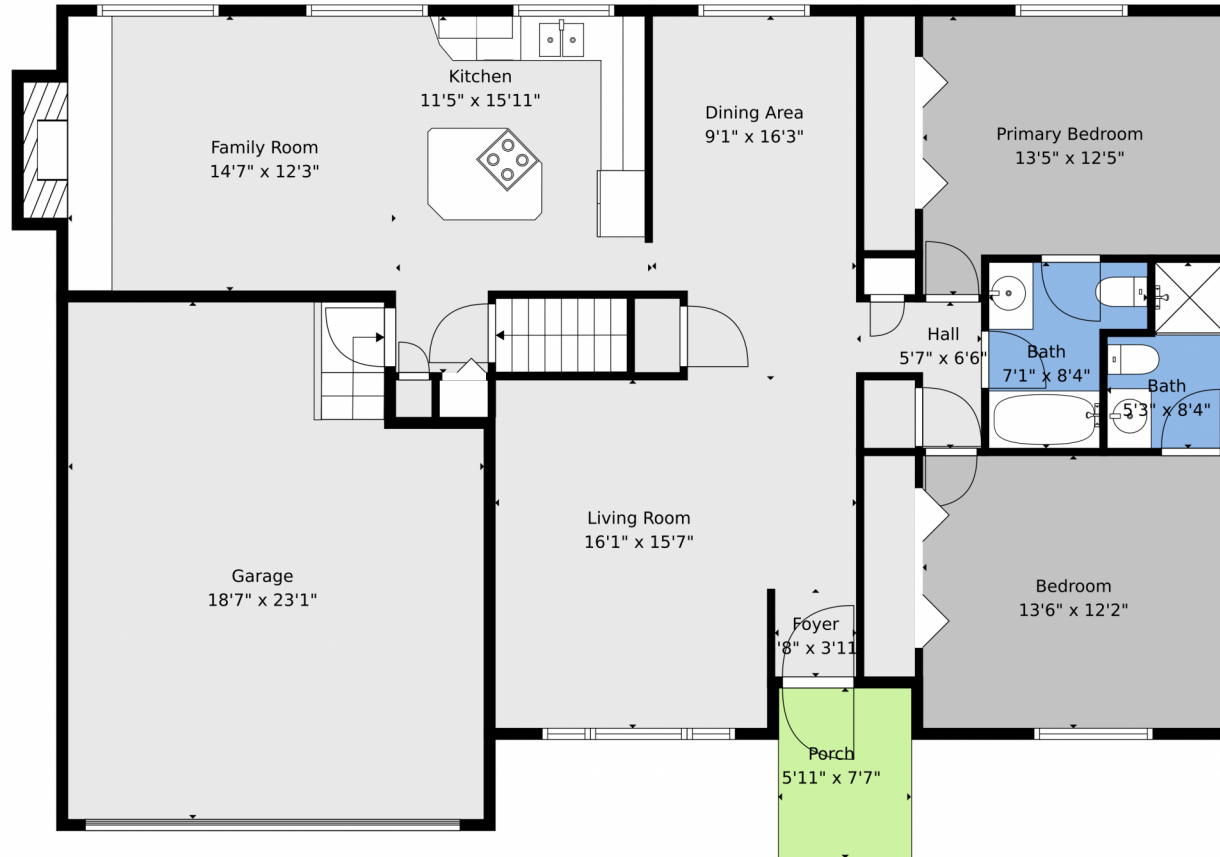
 3 Baths



**Jessica Kuhn**  
303-534-0484  
sales@citylimits5280.com



# 4115 South Vincennes Court, Denver, CO 80237 – Main Level



**TOTAL: 2316 sq. ft**  
Basement: 1035 sq. ft, 1st floor: 1281 sq. ft  
EXCLUDED AREAS: COVERED PATIO: 249 sq. ft, GARAGE: 404 sq. ft, PORCH: 45 sq. ft,  
FIREPLACE: 14 sq. ft, WALLS: 189 sq. ft

Floor Plan Created By V1photos.com. Measurements Deamed Highly Reliable But Not Guaranteed.



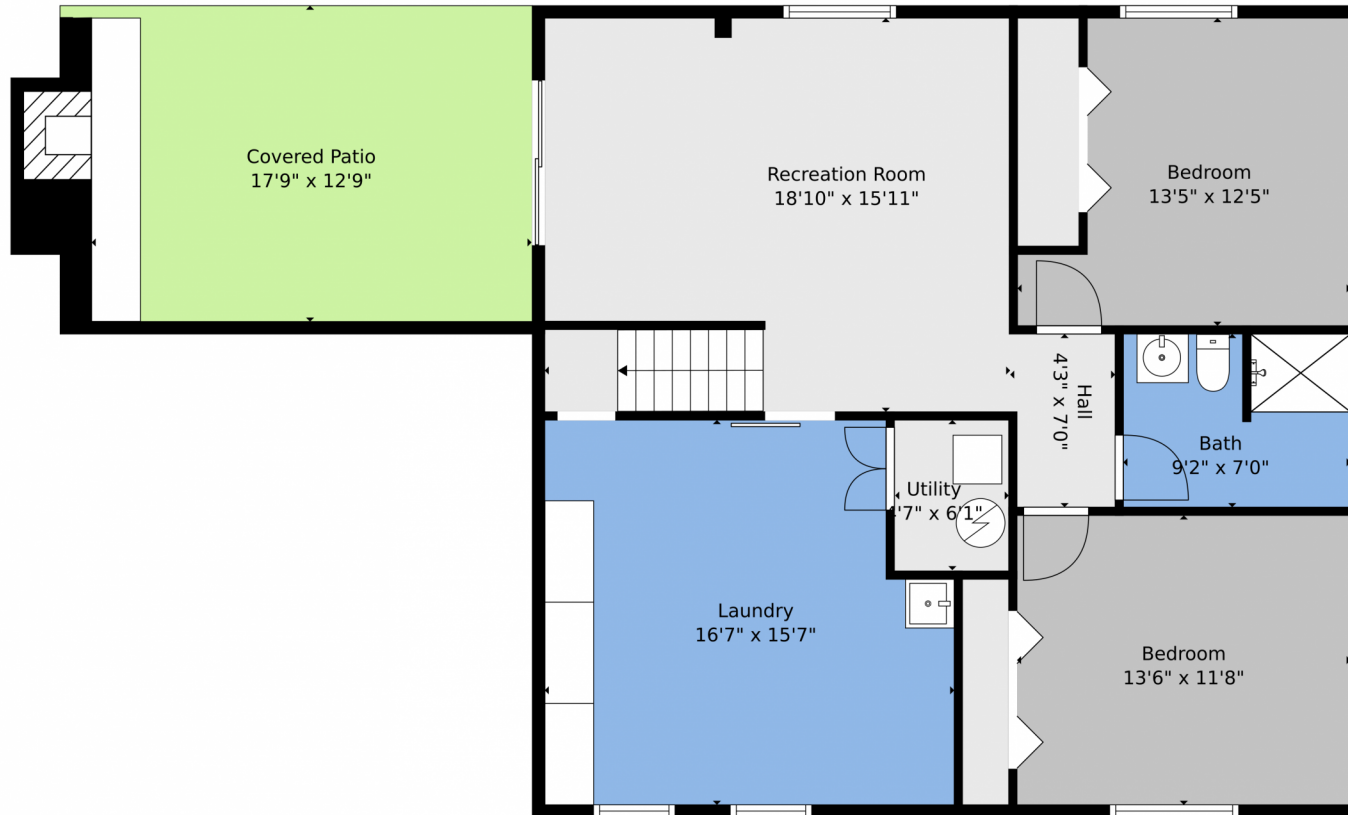
Disclaimer: Sizes and Dimensions are Approximate, Actual May Vary.



**Jessica Kuhn**  
303-534-0484  
sales@citylimits5280.com



4115 South Vincennes Court, Denver, CO 80237 – Lower Level



**TOTAL: 2316 sq. ft**  
Basement: 1035 sq. ft, 1st floor: 1281 sq. ft  
EXCLUDED AREAS: COVERED PATIO: 249 sq. ft, GARAGE: 404 sq. ft, PORCH: 45 sq. ft,  
FIREPLACE: 14 sq. ft, WALLS: 189 sq. ft

Floor Plan Created By V1photos.com. Measurements Deamed Highly Reliable But Not Guaranteed.



Disclaimer: Sizes and Dimensions are Approximate, Actual May Vary.



**Jessica Kuhn**  
303-534-0484  
sales@citylimits5280.com



# 4115 South Vincennes Court, Denver, CO 80237 – All Levels



**TOTAL: 2316 sq. ft**  
Basement: 1035 sq. ft, 1st floor: 1281 sq. ft  
EXCLUDED AREAS: COVERED PATIO: 249 sq. ft, GARAGE: 404 sq. ft, PORCH: 45 sq. ft,  
FIREPLACE: 14 sq. ft, WALLS: 189 sq. ft

Floor Plan Created By V1photos.com. Measurements Deamed Highly Reliable But Not Guaranteed.



Disclaimer: Sizes and Dimensions are Approximate, Actual May Vary.



**Jessica Kuhn**  
303-534-0484  
sales@citylimits5280.com

