



4441 Northeast 15th Avenue  
Oakland Park, FL 33334  
COMMUNITY: Coral Ridge

Open-Concept Living. Elevated South Florida Style.



Single Family



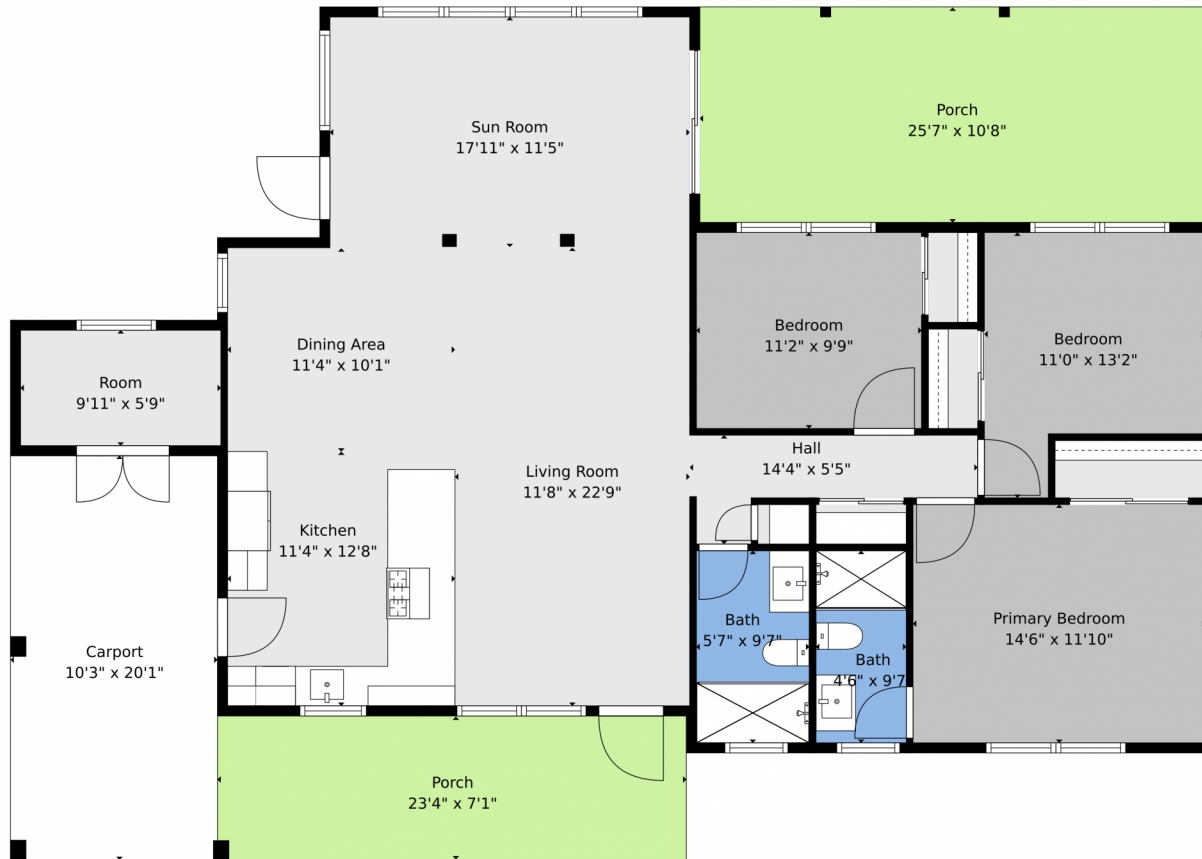
1700 SQFT

John Ard  
954-649-9344  
theardteam@gmail.com



Scan code  
for more  
property  
details





**TOTAL: 1435 sq. ft**  
1st floor: 1435 sq. ft  
EXCLUDED AREAS: PORCH: 441 sq. ft, CARPORT: 207 sq. ft, WALLS: 96 sq. ft

Floor Plan Created By V1photos.com. Measurements Deamed Highly Reliable But Not Guaranteed.



Disclaimer: Sizes and Dimensions are Approximate, Actual May Vary.

