



1031 SW Alexandria Avenue
 Port St Lucie, FL 34953
 COMMUNITY: PORT ST LUCIE SECTION 15

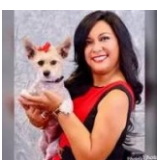
MLS
 # B26018615
 PRICE \$455,000



Single Family 1827 SQFT 4 Beds 3 Baths 2 Car 0.23 Acre

PROPERTY DETAILS

Built in 2019, this 1,827 sq. ft. home in Port St. Lucie offers modern living with no HOA restrictions. The open-concept kitchen flows into the main living area, ideal for entertaining. Tile floors provide durability and style. It features 4 bedrooms, 3 full bathrooms, and walk-in closets for ample storage. A 2-car garage and long driveway ensure plenty of parking. The large fenced backyard is perfect for pets and outdoor gatherings. Conveniently located near essential amenities, this home offers space, value, and lifestyle. It truly checks all the boxes!



Maria D'Palo
 561-735-1103
 mariainfinityrealtor@gmail.com

