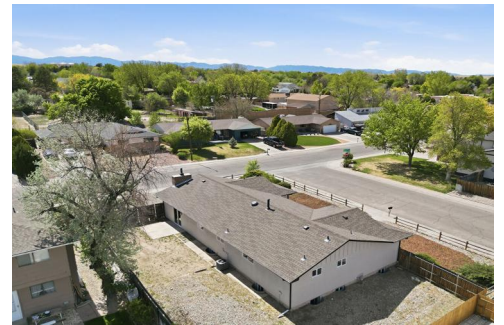



218 Starlite Drive
Pueblo, CO 81005



 Single Family

 2800 SQFT

 5 Beds

 3 Baths

 2 Car

Nick Perkins
719-582-3478
nickperkins85@gmail.com



218 Starlite Drive, Pueblo, CO 81005 – Lower Level



TOTAL: 2817 sq. ft
Basement: 1109 sq. ft, 1st floor: 1708 sq. ft
EXCLUDED AREAS: UTILITY: 187 sq. ft, STORAGE: 103 sq. ft, PORCH: 24 sq. ft,
PATIO: 126 sq. ft, GARAGE: 440 sq. ft, FIREPLACE: 11 sq. ft,
WALLS: 207 sq. ft

Floor Plan Created By V1photos.com. Measurements Deamed Highly Reliable But Not Guaranteed.



Disclaimer: Sizes and Dimensions are Approximate, Actual May Vary.

Nick Perkins
719-582-3478
nickperkins85@gmail.com



218 Starlite Drive, Pueblo, CO 81005 – Main Level



TOTAL: 2817 sq. ft
Basement: 1109 sq. ft, 1st floor: 1708 sq. ft
EXCLUDED AREAS: UTILITY: 187 sq. ft, STORAGE: 103 sq. ft, PORCH: 24 sq. ft,
PATIO: 126 sq. ft, GARAGE: 440 sq. ft, FIREPLACE: 11 sq. ft,
WALLS: 207 sq. ft

Floor Plan Created By V1photos.com. Measurements Deamed Highly Reliable But Not Guaranteed.



Disclaimer: Sizes and Dimensions are Approximate, Actual May Vary.

Nick Perkins
719-582-3478
nickperkins85@gmail.com



218 Starlite Drive, Pueblo, CO 81005 – All Levels



1st Floor



Basement

TOTAL: 2817 sq. ft
Basement: 1109 sq. ft, 1st floor: 1708 sq. ft
EXCLUDED AREAS: UTILITY: 187 sq. ft, STORAGE: 103 sq. ft, PORCH: 24 sq. ft,
PATIO: 126 sq. ft, GARAGE: 440 sq. ft, FIREPLACE: 11 sq. ft,
WALLS: 207 sq. ft

Floor Plan Created By V1photos.com. Measurements Deamed Highly Reliable But Not Guaranteed.



Disclaimer: Sizes and Dimensions are Approximate, Actual May Vary.

Nick Perkins
719-582-3478
nickperkins85@gmail.com

