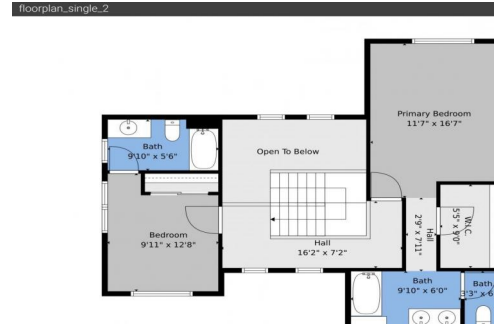
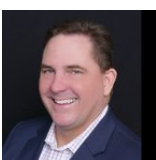


Great quiet neighborhood and convenient access to anywhere



Townhouse 1631 SQFT 3 Beds 3 Baths 2 Car 0.16 Acre



**Phil Gibson**  
303-325-6020  
philgibson@kw.com  
<https://unitygroup.kw.com/>



**Beth Gibson**  
720-849-3577  
bethgibson@kw.com  
<https://bethgibson.kw.com/>



Scan code  
for more  
property  
details



# 22062 East Irish Drive, Aurora, CO 80016 – All Levels



**TOTAL: 1582 sq. ft**  
Basement: 0 sq. ft, 1st floor: 900 sq. ft, 2nd floor: 682 sq. ft  
EXCLUDED AREAS: BASEMENT: 900 sq. ft, GARAGE: 393 sq. ft, BALCONY: 63 sq. ft,  
OPEN TO BELOW: 85 sq. ft, WALLS: 233 sq. ft

Floor Plan Created By V1photos.com. Measurements Deamed Highly Reliable But Not Guaranteed.



Disclaimer: Sizes and Dimensions are Approximate, Actual May Vary.



**Phil Gibson**  
303-325-6020  
philgibson@kw.com  
<https://unitygroup.kw.com/>



**Beth Gibson**  
720-849-3577  
bethgibson@kw.com  
<https://bethgibson.kw.com/>



Scan code  
for more  
property  
details

