

2353 Dogwood Drive  
Erie, CO 80516



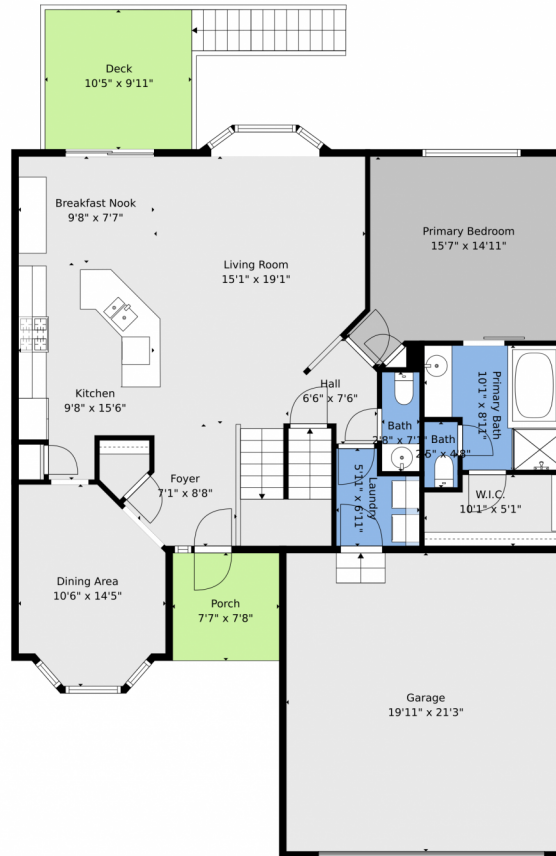
 Single Family  3131 SQFT



**Will Story**  
720-975-7227  
Katie@StoryHomeGroup.com



# 2353 Dogwood Drive, Erie, CO 80516 – Main



**TOTAL: 1835 sq. ft**

Basement: 0 sq. ft, 1st floor: 1180 sq. ft, 2nd floor: 655 sq. ft  
EXCLUDED AREAS: STORAGE: 147 sq. ft, BASEMENT: 944 sq. ft, UTILITY: 39 sq. ft,  
PATIO: 399 sq. ft, GARAGE: 424 sq. ft, PORCH: 59 sq. ft,  
DECK: 104 sq. ft, BAY WINDOW: 12 sq. ft, OPEN TO BELOW: 308 sq. ft,  
WALLS: 254 sq. ft

Floor Plan Created By V1photos.com. Measurements Deamed Highly Reliable But Not Guaranteed.



Disclaimer: Sizes and Dimensions are Approximate, Actual May Vary.



**Will Story**

720-975-7227

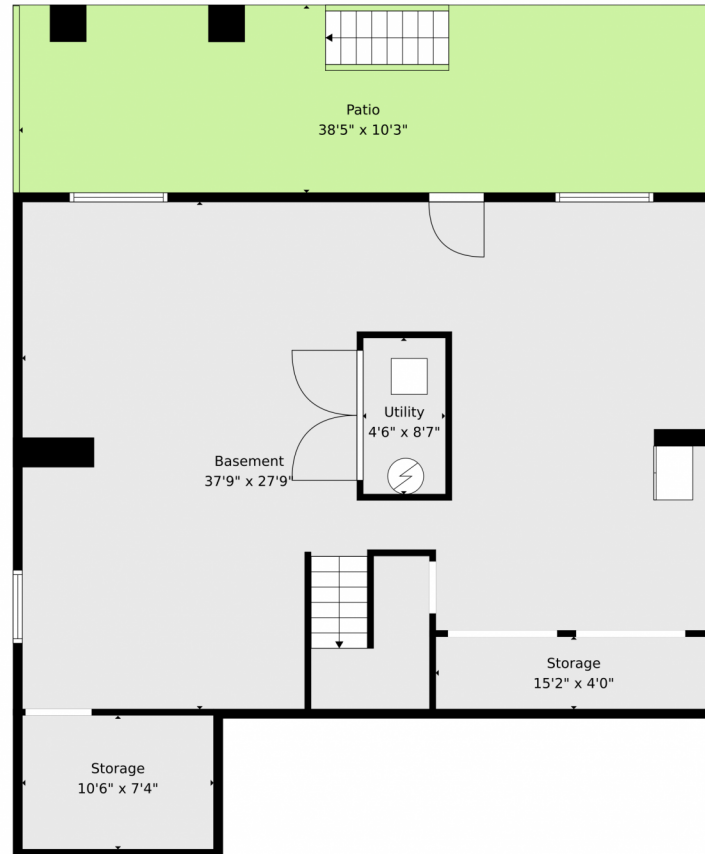
Katie@StoryHomeGroup.com



Scan code  
for more  
property  
details



# 2353 Dogwood Drive, Erie, CO 80516 — Basement



**TOTAL: 1835 sq. ft**

Basement: 0 sq. ft, 1st floor: 1180 sq. ft, 2nd floor: 655 sq. ft  
EXCLUDED AREAS: STORAGE: 147 sq. ft, BASEMENT: 944 sq. ft, UTILITY: 39 sq. ft,  
PATIO: 399 sq. ft, GARAGE: 424 sq. ft, PORCH: 59 sq. ft,  
DECK: 104 sq. ft, BAY WINDOW: 12 sq. ft, OPEN TO BELOW: 308 sq. ft,  
WALLS: 254 sq. ft

Floor Plan Created By V1photos.com. Measurements Deamed Highly Reliable But Not Guaranteed.



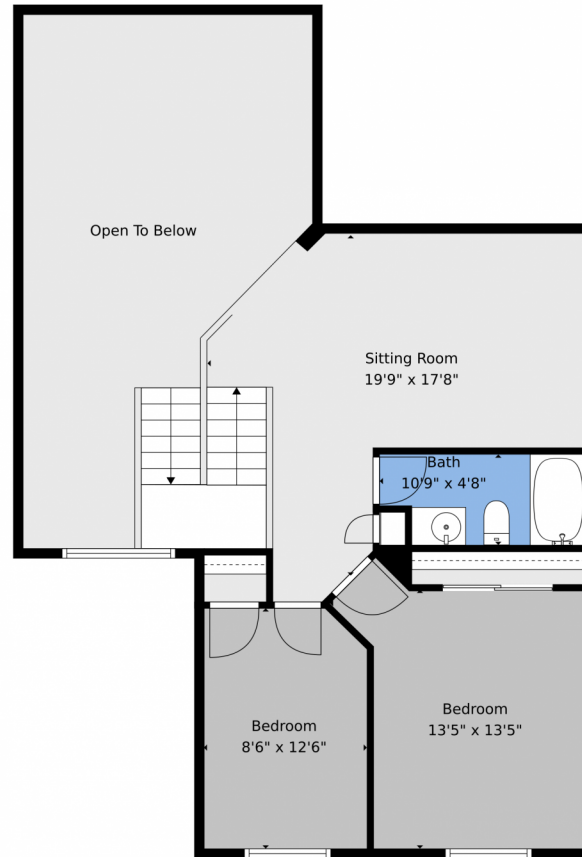
Disclaimer: Sizes and Dimensions are Approximate, Actual May Vary.



**Will Story**  
720-975-7227  
Katie@StoryHomeGroup.com



2353 Dogwood Drive, Erie, CO 80516 – 2nd Level



**TOTAL: 1835 sq. ft**  
Basement: 0 sq. ft, 1st floor: 1180 sq. ft, 2nd floor: 655 sq. ft  
EXCLUDED AREAS: STORAGE: 147 sq. ft, BASEMENT: 944 sq. ft, UTILITY: 39 sq. ft,  
PATIO: 399 sq. ft, GARAGE: 424 sq. ft, PORCH: 59 sq. ft,  
DECK: 104 sq. ft, BAY WINDOW: 12 sq. ft, OPEN TO BELOW: 308 sq. ft,  
WALLS: 254 sq. ft

Floor Plan Created By V1photos.com. Measurements Deamed Highly Reliable But Not Guaranteed.



Disclaimer: Sizes and Dimensions are Approximate, Actual May Vary.



**Will Story**  
720-975-7227  
Katie@StoryHomeGroup.com



# 2353 Dogwood Drive, Erie, CO 80516 – All Levels



**TOTAL: 1835 sq. ft**  
Basement: 0 sq. ft, 1st floor: 1180 sq. ft, 2nd floor: 655 sq. ft  
EXCLUDED AREAS: STORAGE: 147 sq. ft, BASEMENT: 944 sq. ft, UTILITY: 39 sq. ft,  
PATIO: 399 sq. ft, GARAGE: 424 sq. ft, PORCH: 59 sq. ft,  
DECK: 104 sq. ft, BAY WINDOW: 12 sq. ft, OPEN TO BELOW: 308 sq. ft,  
WALLS: 254 sq. ft

Floor Plan Created By V1photos.com. Measurements Deamed Highly Reliable But Not Guaranteed.



Disclaimer: Sizes and Dimensions are Approximate, Actual May Vary.



**Will Story**  
720-975-7227  
Katie@StoryHomeGroup.com



Scan code  
for more  
property  
details

