



1801 South Downing Street  
Denver, CO 80210



Single Family

250 SQFT

4 Beds

4 Baths



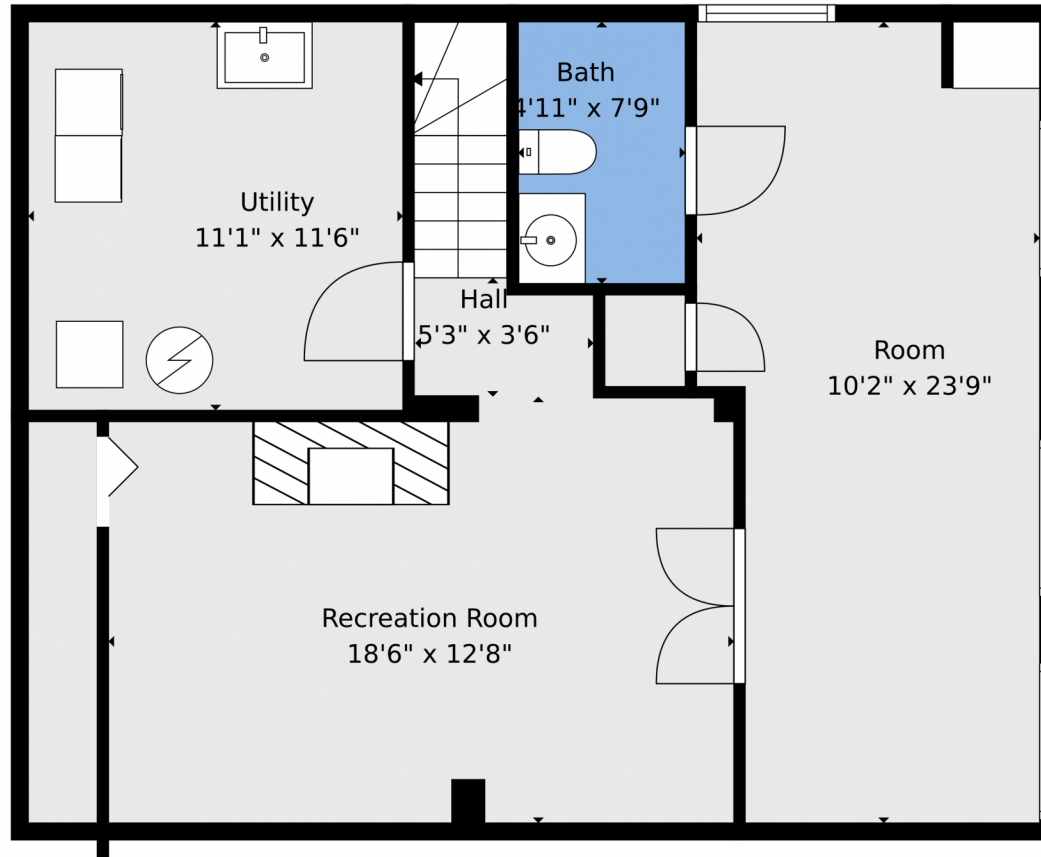
**Ambierre Rediger**  
720-261-7468  
ambierre@peakprairie.com  
<https://www.peakprairie.com/>



Scan code  
for more  
property  
details



1801 South Downing Street, Denver, CO 80210 – Lower Level



**TOTAL: 1821 sq. ft**  
Basement: 554 sq. ft, 1st floor: 949 sq. ft, 2nd floor: 318 sq. ft  
EXCLUDED AREAS: UNDEFINED: 24 sq. ft, UTILITY: 128 sq. ft, GARAGE: 489 sq. ft,  
DECK: 100 sq. ft, PORCH: 31 sq. ft, ATTIC: 96 sq. ft,  
LOW CEILING: 36 sq. ft, WALLS: 234 sq. ft

Floor Plan Created By V1photos.com. Measurements Deamed Highly Reliable But Not Guaranteed.

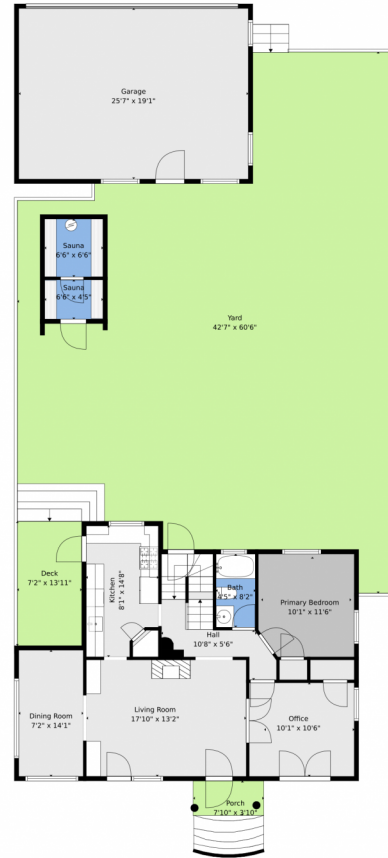


Disclaimer: Sizes and Dimensions are Approximate, Actual May Vary.



**Ambierre Rediger**  
720-261-7468  
ambierre@peakprairie.com  
<https://www.peakprairie.com/>





**TOTAL: 1821 sq. ft**  
Basement: 554 sq. ft, 1st floor: 949 sq. ft, 2nd floor: 318 sq. ft  
EXCLUDED AREAS: UNDEFINED: 24 sq. ft, UTILITY: 128 sq. ft, GARAGE: 489 sq. ft,  
DECK: 100 sq. ft, PORCH: 31 sq. ft, ATTIC: 96 sq. ft,  
LOW CEILING: 36 sq. ft, WALLS: 234 sq. ft

Floor Plan Created By V1photos.com. Measurements Deamed Highly Reliable But Not Guaranteed.

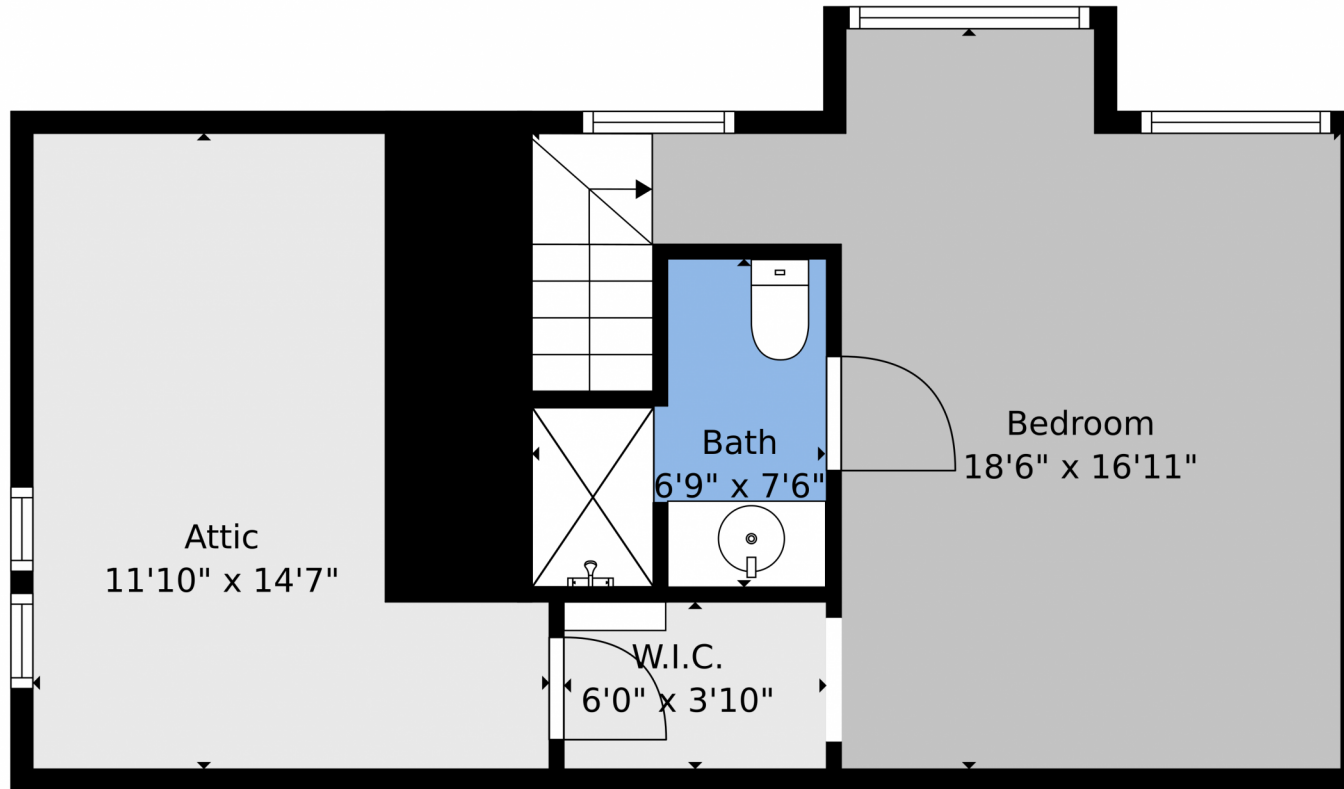


Disclaimer: Sizes and Dimensions are Approximate, Actual May Vary.



**Ambierre Rediger**  
720-261-7468  
ambierre@peakprairie.com  
<https://www.peakprairie.com/>





**TOTAL: 1821 sq. ft**  
Basement: 554 sq. ft, 1st floor: 949 sq. ft, 2nd floor: 318 sq. ft  
EXCLUDED AREAS: UNDEFINED: 24 sq. ft, UTILITY: 128 sq. ft, GARAGE: 489 sq. ft,  
DECK: 100 sq. ft, PORCH: 31 sq. ft, ATTIC: 96 sq. ft,  
LOW CEILING: 36 sq. ft, WALLS: 234 sq. ft

Floor Plan Created By V1photos.com. Measurements Deamed Highly Reliable But Not Guaranteed.



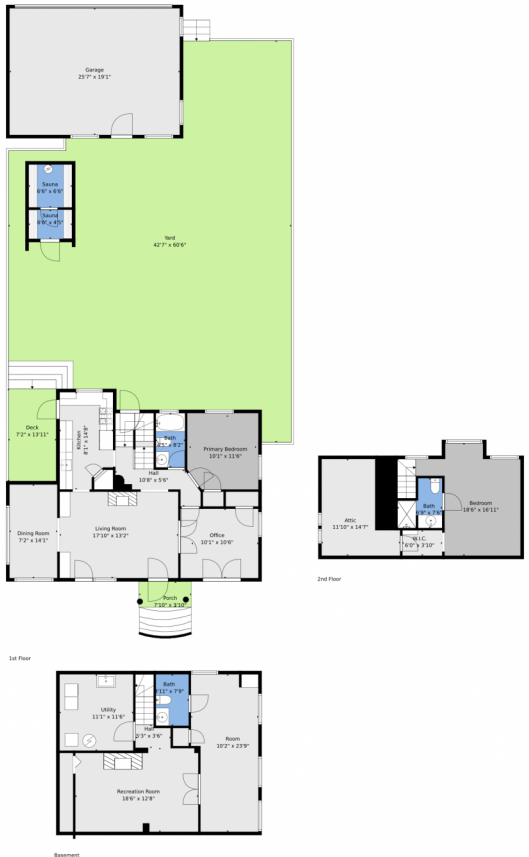
Disclaimer: Sizes and Dimensions are Approximate, Actual May Vary.



**Ambierre Rediger**  
720-261-7468  
ambierre@peakprairie.com  
<https://www.peakprairie.com/>



# 1801 South Downing Street, Denver, CO 80210 – All Levels



**TOTAL: 1821 sq. ft**  
Basement: 554 sq. ft, 1st floor: 949 sq. ft, 2nd floor: 318 sq. ft  
EXCLUDED AREAS: UNDEFINED: 24 sq. ft, UTILITY: 128 sq. ft, GARAGE: 489 sq. ft,  
DECK: 100 sq. ft, PORCH: 31 sq. ft, ATTIC: 96 sq. ft,  
LOW CEILING: 36 sq. ft, WALLS: 234 sq. ft

Floor Plan Created By V1photos.com. Measurements Deamed Highly Reliable But Not Guaranteed.



Disclaimer: Sizes and Dimensions are Approximate, Actual May Vary.



**Ambierre Rediger**  
720-261-7468  
ambierre@peakprairie.com  
<https://www.peakprairie.com/>



Scan code  
for more  
property  
details

