



6230 East Jamison Circle South
 Centennial, CO 80112
 COMMUNITY: Homestead Farm II

MLS # 7344252
 PRICE \$1,050,000

Perfect Sanford built Barrytown in coveted Homestead Farm II



-  Single Family
-  2230 SQFT
-  4 Beds
-  2/2 Baths
-  2 Car
-  0.2 Acre

PROPERTY DETAILS

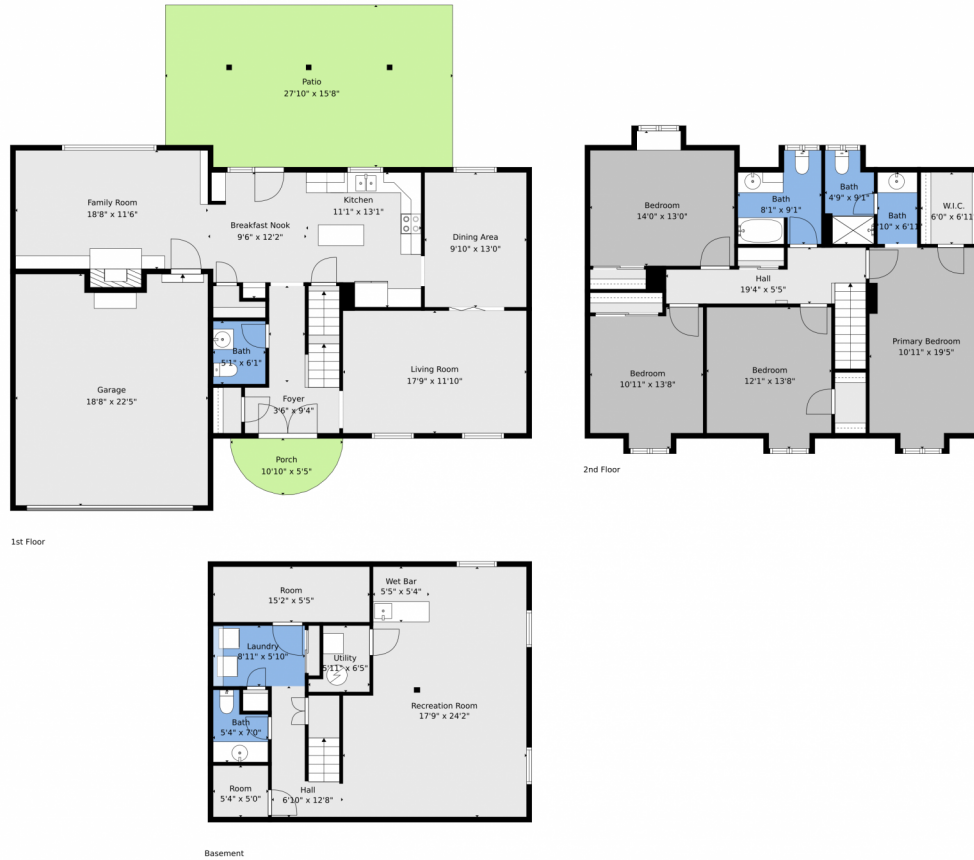
This beautifully maintained 4 bedroom, 4 bathroom Barrytown model in Homestead Farm II is move-in ready. Located on a quiet cul-de-sac, it features plantation shutters and real hardwood floors throughout. The main level includes a family room with a fireplace, formal living and dining rooms, and a remodeled kitchen. Outside, enjoy a low-maintenance stamped concrete deck for gatherings. Upstairs are four spacious bedrooms and updated bathrooms. The finished basement offers a recreation room, half bath, and laundry. Residents have access to greenbelts, a community pool, playground, and tennis courts. The home has a classic design with hail-resistant shingles and a south-facing backyard with a covered deck. Located in the award-winning Littleton Public Schools district, it's close to the Denver Tech Center and major highways. Enjoy a vibrant community lifestyle with events and amenities.



Eric Johnson
 303-718-1947
 eric@door2denver.com
<https://door2denver.com>



6230 East Jamison Circle South, Centennial, CO 80112 – All Levels



TOTAL: 2723 sq. ft
Basement: 705 sq. ft, 1st floor: 987 sq. ft, 2nd floor: 1031 sq. ft
EXCLUDED AREAS: UTILITY: 31 sq. ft, GARAGE: 406 sq. ft, PORCH: 47 sq. ft,
PATIO: 427 sq. ft, FIREPLACE: 11 sq. ft, WALLS: 230 sq. ft

Floor Plan Created By V1photos.com. Measurements Deamed Highly Reliable But Not Guaranteed.



Disclaimer: Sizes and Dimensions are Approximate, Actual May Vary.



Eric Johnson
303-718-1947
eric@door2denver.com
<https://door2denver.com>

