

6844 Bethany Drive
Parker, CO 80138
COMMUNITY: Lincoln Creek Village



Townhouse



1554 SQFT



3 Beds



2/1 Baths



2 Car



0.04 Acre

Cathy Burr
303-887-2800
yourrealtorforlife@msn.com



Scan code
for more
property
details



6844 Bethany Drive, Parker, CO 80138 — Main Level



TOTAL: 1501 sq. ft
1st floor: 652 sq. ft, 2nd floor: 849 sq. ft
EXCLUDED AREAS: GARAGE: 421 sq. ft, PORCH: 167 sq. ft, OPEN TO BELOW: 18 sq. ft,
WALLS: 106 sq. ft

Floor Plan Created By V1photos.com, Measurements Deamed Highly Reliable But Not Guaranteed.

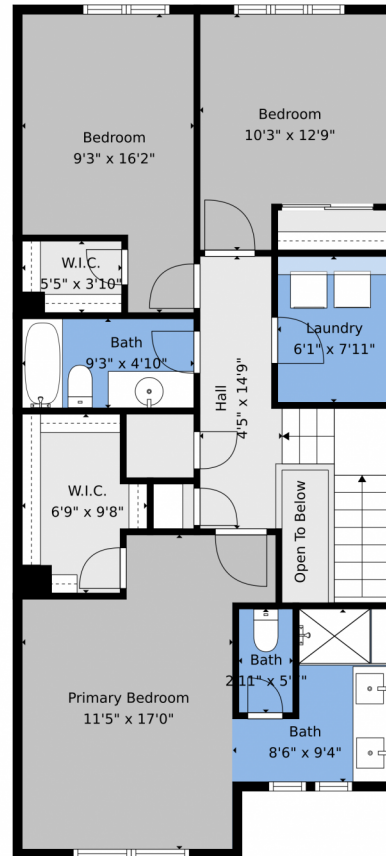


Disclaimer: Sizes and Dimensions are Approximate, Actual May Vary.

Cathy Burr
303-887-2800
yourrealtorforlife@msn.com



6844 Bethany Drive, Parker, CO 80138 — 2nd Level



TOTAL: 1501 sq. ft

1st floor: 652 sq. ft, 2nd floor: 849 sq. ft

EXCLUDED AREAS: GARAGE: 421 sq. ft, PORCH: 167 sq. ft, OPEN TO BELOW: 18 sq. ft,
WALLS: 106 sq. ft

Floor Plan Created By V1photos.com. Measurements Deamed Highly Reliable But Not Guaranteed.



Disclaimer: Sizes and Dimensions are Approximate, Actual May Vary.

Cathy Burr
303-887-2800
yourrealtorforlife@msn.com



6844 Bethany Drive, Parker, CO 80138 — All Levels



TOTAL: 1501 sq. ft
1st floor: 652 sq. ft, 2nd floor: 849 sq. ft
EXCLUDED AREAS: GARAGE: 421 sq. ft, PORCH: 167 sq. ft, OPEN TO BELOW: 18 sq. ft,
WALLS: 106 sq. ft

Floor Plan Created By V1photos.com. Measurements Deamed Highly Reliable But Not Guaranteed.

Disclaimer: Sizes and Dimensions are Approximate, Actual May Vary.

Cathy Burr
303-887-2800
yourrealtorforlife@msn.com

