

12568 Beacon Street
Longmont, CO 80504



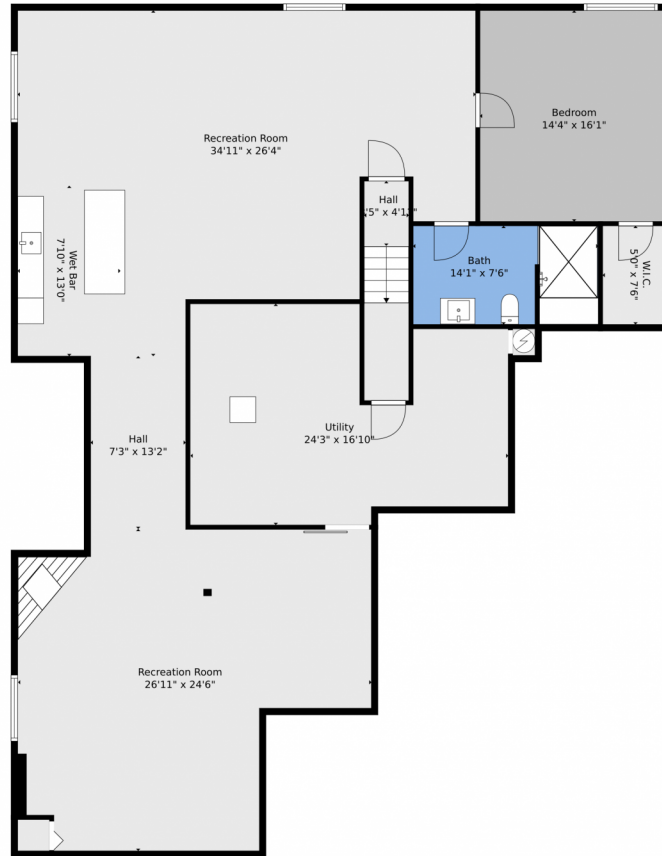
Single Family



2000 SQFT

Dylan Nash
303-882-8756
Dylan.nash@nashresales.com





TOTAL: 4415 sq. ft
Basement 1: 1887 sq. ft, 1st floor: 2528 sq. ft
EXCLUDED AREAS: UTILITY: 353 sq. ft, GARAGE: 683 sq. ft, PORCH: 81 sq. ft,
COVERED PATIO: 68 sq. ft, PATIO: 589 sq. ft, WALLS: 280 sq. ft

Floor Plan Created By V1photos.com. Measurements Deamed Highly Reliable But Not Guaranteed.



Disclaimer: Sizes and Dimensions are Approximate, Actual May Vary.

Dylan Nash
303-882-8756
Dylan.nash@nashresales.com



12568 Beacon Street, Longmont, CO 80504 – floorplan_single_1



TOTAL: 4415 sq. ft
Basement 1: 1887 sq. ft, 1st floor: 2528 sq. ft
EXCLUDED AREAS: UTILITY: 353 sq. ft, GARAGE: 683 sq. ft, PORCH: 81 sq. ft,
COVERED PATIO: 68 sq. ft, PATIO: 589 sq. ft, WALLS: 280 sq. ft

Floor Plan Created By V1photos.com. Measurements Deamed Highly Reliable But Not Guaranteed.



Disclaimer: Sizes and Dimensions are Approximate, Actual May Vary.

Dylan Nash
303-882-8756
Dylan.nash@nashresales.com



Scan code
for more
property
details



TOTAL: 4415 sq. ft
Basement 1: 1887 sq. ft, 1st floor: 2528 sq. ft
EXCLUDED AREAS: UTILITY: 353 sq. ft, GARAGE: 683 sq. ft, PORCH: 81 sq. ft,
COVERED PATIO: 68 sq. ft, PATIO: 589 sq. ft, WALLS: 280 sq. ft

Floor Plan Created By V1photos.com. Measurements Deamed Highly Reliable But Not Guaranteed.



Disclaimer: Sizes and Dimensions are Approximate, Actual May Vary.

