



16166 East 109th Place
Commerce City, CO 80022



Single Family



4749 SQFT



Tatyana Sturm
720-350-5909
tatyana@exitrealttydtc.com
<https://thestorckteam.com>



Scan code
for more
property
details



16166 East 109th Place, Commerce City, CO 80022 — Main



TOTAL: 4501 sq. ft

Basement 1: 1136 sq. ft, 1st floor: 1767 sq. ft, 2nd floor: 1598 sq. ft
EXCLUDED AREAS: STORAGE: 352 sq. ft, UTILITY: 122 sq. ft, GARAGE: 408 sq. ft,
COVERED PATIO: 230 sq. ft, PORCH: 241 sq. ft, OPEN TO BELOW: 85 sq. ft,
WALLS: 327 sq. ft

Floor Plan Created By V1photos.com, Measurements Deamed Highly Reliable But Not Guaranteed.



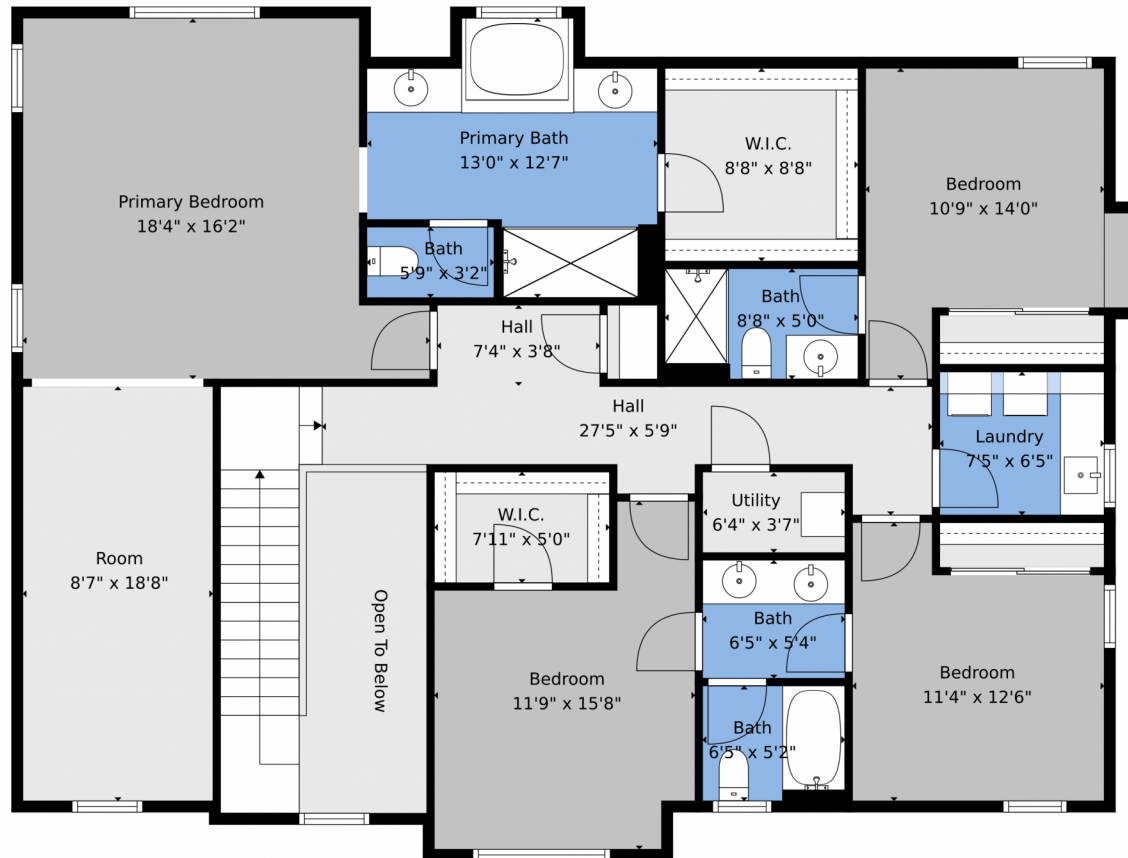
Disclaimer: Sizes and Dimensions are Approximate, Actual May Vary.



Tatyana Sturm
720-350-5909
tatyana@exitrealttydtc.com
<https://thestorckteam.com>



16166 East 109th Place, Commerce City, CO 80022 – 2nd Level



TOTAL: 4501 sq. ft

Basement 1: 1136 sq. ft, 1st floor: 1767 sq. ft, 2nd floor: 1598 sq. ft
EXCLUDED AREAS: STORAGE: 352 sq. ft, UTILITY: 122 sq. ft, GARAGE: 408 sq. ft,
COVERED PATIO: 230 sq. ft, PORCH: 241 sq. ft, OPEN TO BELOW: 85 sq. ft,
WALLS: 327 sq. ft

Floor Plan Created By V1photos.com. Measurements Deamed Highly Reliable But Not Guaranteed.



Disclaimer: Sizes and Dimensions are Approximate, Actual May Vary.



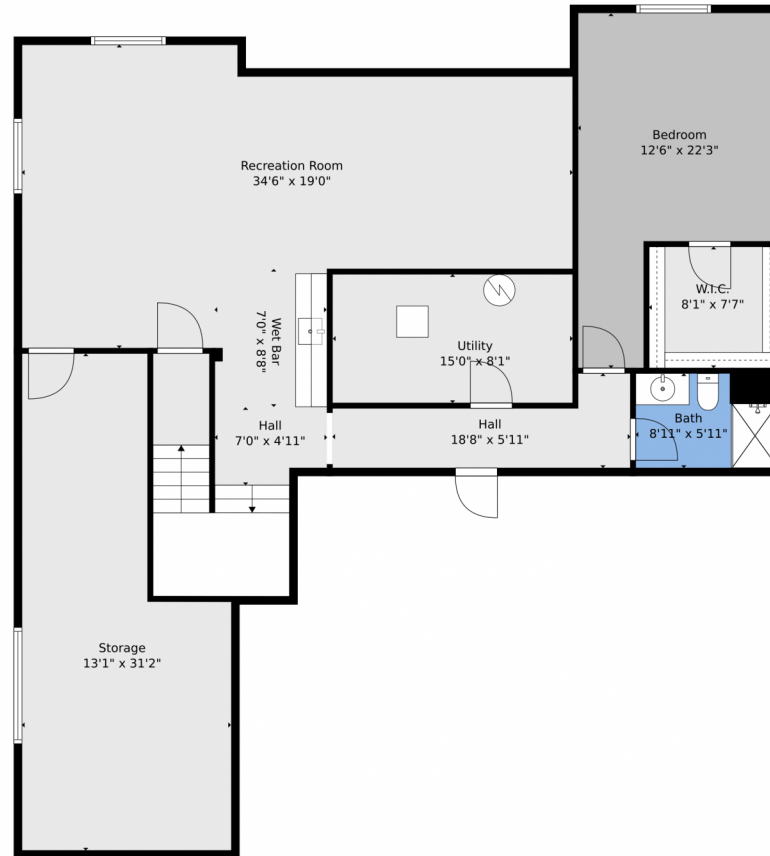
Tatyana Sturm
720-350-5909
tatyana@exitrealtydtc.com
<https://thestorckteam.com>



Scan code
for more
property
details



16166 East 109th Place, Commerce City, CO 80022 — Lower Level



TOTAL: 4501 sq. ft

Basement 1: 1136 sq. ft, 1st floor: 1767 sq. ft, 2nd floor: 1598 sq. ft
EXCLUDED AREAS: STORAGE: 352 sq. ft, UTILITY: 122 sq. ft, GARAGE: 408 sq. ft,
COVERED PATIO: 230 sq. ft, PORCH: 241 sq. ft, OPEN TO BELOW: 85 sq. ft,
WALLS: 327 sq. ft

Floor Plan Created By V1photos.com, Measurements Deamed Highly Reliable But Not Guaranteed.



Disclaimer: Sizes and Dimensions are Approximate, Actual May Vary.



Tatyana Sturm
720-350-5909
tatyana@exitrealttydtc.com
<https://thestorckteam.com>



Scan code
for more
property
details



16166 East 109th Place, Commerce City, CO 80022 — All Levels



TOTAL: 4501 sq. ft

Basement 1: 1136 sq. ft, 1st floor: 1767 sq. ft, 2nd floor: 1598 sq. ft
 EXCLUDED AREAS: STORAGE: 352 sq. ft, UTILITY: 122 sq. ft, GARAGE: 408 sq. ft,
 COVERED PATIO: 230 sq. ft, PORCH: 241 sq. ft, OPEN TO BELOW: 85 sq. ft,
 WALLS: 327 sq. ft

Floor Plan Created By V1photos.com, Measurements Deamed Highly Reliable But Not Guaranteed.



Disclaimer: Sizes and Dimensions are Approximate, Actual May Vary.



Tatyana Sturm
 720-350-5909
tatyana@exitrealttydtc.com
<https://thestorckteam.com>



Scan code
 for more
 property
 details

