



2900 North Downing Street
Denver, CO 80205
COMMUNITY: Downings



Condominium



975 SQFT



2 Beds



1 Baths



10+ Car



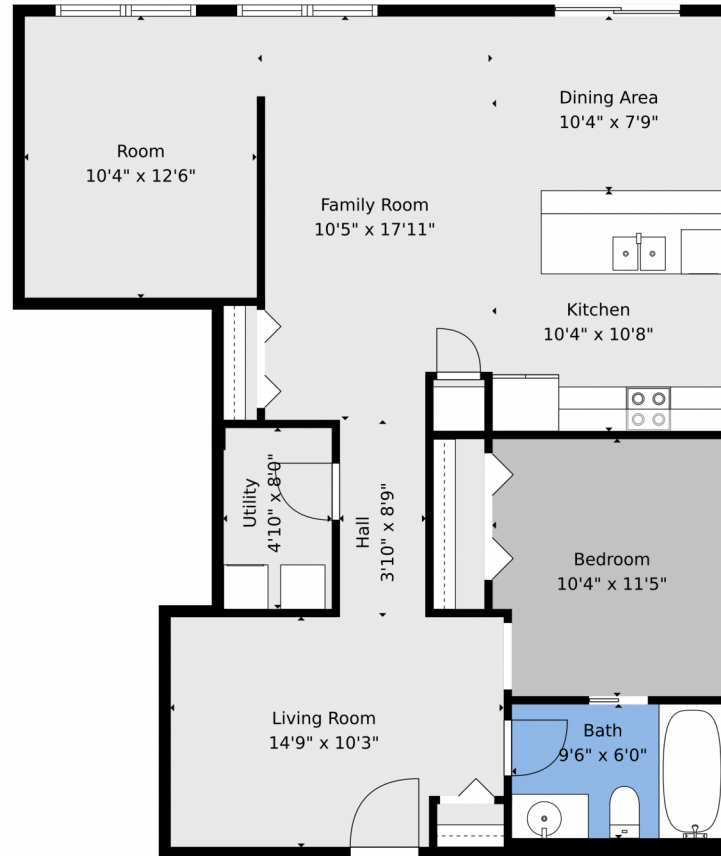
Ted Peterson Care Real Estate
303-668-5533
ted@tedarla.com



Scan code
for more
property
details



2900 North Downing Street, Denver, CO 80205 — Main



TOTAL: 957 sq. ft
1st floor: 957 sq. ft
EXCLUDED AREAS: WALLS: 72 sq. ft

Floor Plan Created By V1photos.com, Measurements Deamed Highly Reliable But Not Guaranteed.



Disclaimer: Sizes and Dimensions are Approximate, Actual May Vary.



Ted Peterson Care Real Estate
303-668-5533
ted@tedarla.com

