

## Live in Luxury at The Pinery



Single Family



4033 SQFT



5 Beds



4/1 Baths



2 Car

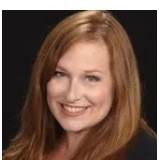


0.37 Acre

## PROPERTY DETAILS

This beautifully remodeled two-story home features a main-floor primary suite, a gourmet kitchen, and stunning mountain views on over one-third of an acre in the desirable Pinery community. The main floor boasts wide-plank light wood flooring and a dramatic great room that flows into the kitchen, perfect for entertaining. Every west-facing window offers natural light and breathtaking sunsets.

The upper level includes a private bedroom with an en-suite bath, another spacious bedroom, and a loft with mountain vistas and a skylight. A bonus room accessed through the loft is ideal for various uses. The finished walk-out basement includes a laundry room and spaces for relaxation and entertainment, with access to the landscaped yard. Two additional bedrooms share a three-quarter bath. This home features a clay-tile roof, new windows, new HVAC, and high-end finishes, making it perfect for elevated living.



**Audrey Schoeppner**  
720-539-1220  
aschoeppner@kw.com



Scan code  
for more  
property  
details

