



16321 Orchard Grass Lane  
Parker, CO 80134  
COMMUNITY: Cottonwood

MLS # 4688321  
PRICE \$535,000



floorplan\_single\_1



Single Family



1915 SQFT



4 Beds



3 Baths



2 Car



0.1 Acre



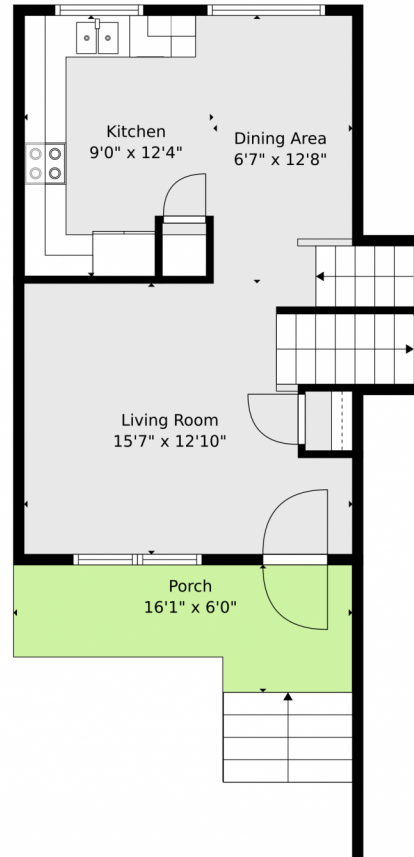
Valerie Skorka Westmark  
303-981-0950  
valeriewestmark@gmail.com  
<https://valerie-skorka.remax.com/>



Scan code  
for more  
property  
details



# 16321 Orchard Grass Lane, Parker, CO 80134 — Main



**TOTAL: 1605 sq. ft**

Basement 1: 266 sq. ft, 1st floor: 277 sq. ft, 2nd floor: 417 sq. ft, 3rd floor: 645 sq. ft  
EXCLUDED AREAS: UTILITY: 63 sq. ft, GARAGE: 407 sq. ft, DECK: 317 sq. ft,  
FIREPLACE: 13 sq. ft, PORCH: 106 sq. ft, WALLS: 212 sq. ft

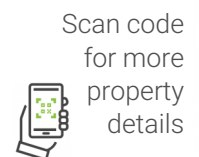
Floor Plan Created By V1photos.com. Measurements Deamed Highly Reliable But Not Guaranteed.



Disclaimer: Sizes and Dimensions are Approximate, Actual May Vary.

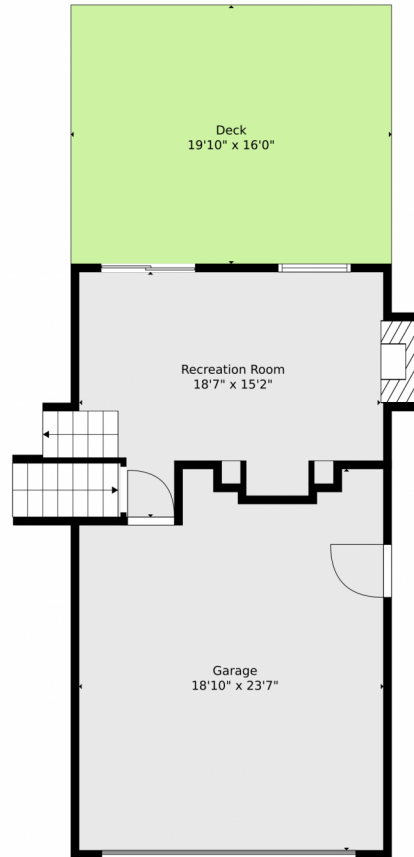


**Valerie Skorka Westmark**  
303-981-0950  
valeriewestmark@gmail.com  
<https://valerie-skorka.remax.com/>



Scan code  
for more  
property  
details





**TOTAL: 1605 sq. ft**

Basement 1: 266 sq. ft, 1st floor: 277 sq. ft, 2nd floor: 417 sq. ft, 3rd floor: 645 sq. ft  
EXCLUDED AREAS: UTILITY: 63 sq. ft, GARAGE: 407 sq. ft, DECK: 317 sq. ft,  
FIREPLACE: 13 sq. ft, PORCH: 106 sq. ft, WALLS: 212 sq. ft

Floor Plan Created By V1photos.com. Measurements Deamed Highly Reliable But Not Guaranteed.



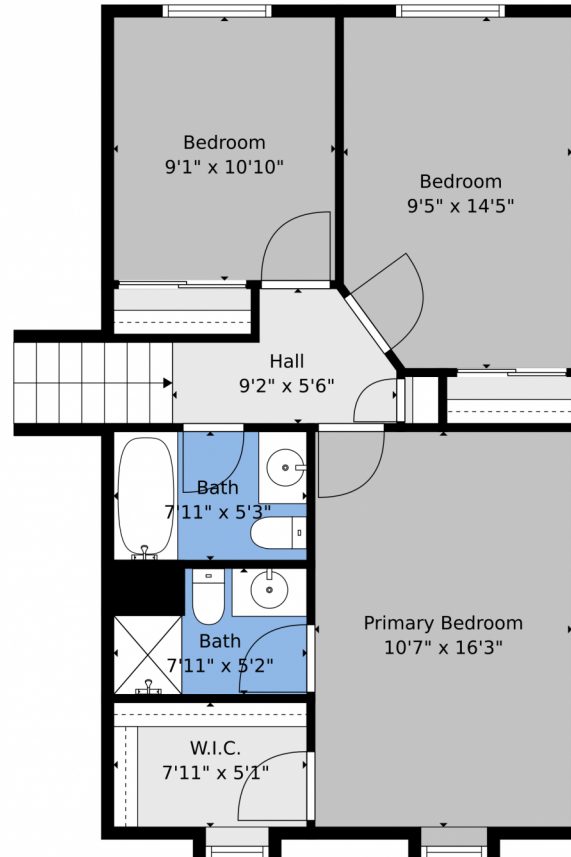
Disclaimer: Sizes and Dimensions are Approximate, Actual May Vary.



**Valerie Skorka Westmark**  
303-981-0950  
valeriewestmark@gmail.com  
<https://valerie-skorka.remax.com/>



## 16321 Orchard Grass Lane, Parker, CO 80134 – 2nd Level



**TOTAL: 1605 sq. ft**

Basement 1: 266 sq. ft, 1st floor: 277 sq. ft, 2nd floor: 417 sq. ft, 3rd floor: 645 sq. ft  
EXCLUDED AREAS: UTILITY: 63 sq. ft, GARAGE: 407 sq. ft, DECK: 317 sq. ft,  
FIREPLACE: 13 sq. ft, PORCH: 106 sq. ft, WALLS: 212 sq. ft

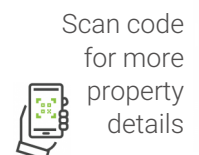
Floor Plan Created By V1photos.com, Measurements Deamed Highly Reliable But Not Guaranteed.



Disclaimer: Sizes and Dimensions are Approximate, Actual May Vary.



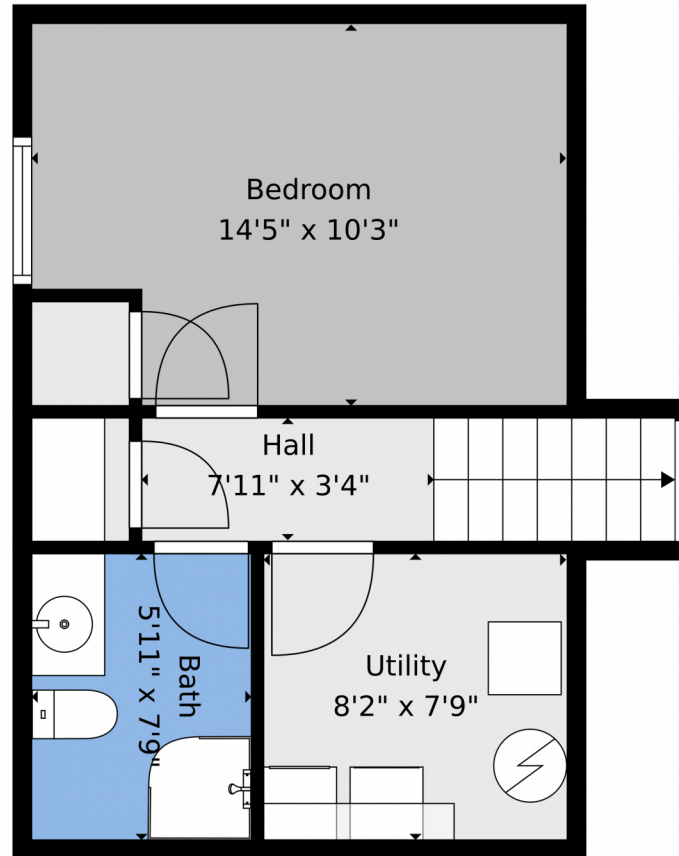
**Valerie Skorka Westmark**  
303-981-0950  
valeriewestmark@gmail.com  
<https://valerie-skorka.remax.com/>



Scan code  
for more  
property  
details



## 16321 Orchard Grass Lane, Parker, CO 80134 — Basement



**TOTAL: 1605 sq. ft**

Basement 1: 266 sq. ft, 1st floor: 277 sq. ft, 2nd floor: 417 sq. ft, 3rd floor: 645 sq. ft  
EXCLUDED AREAS: UTILITY: 63 sq. ft, GARAGE: 407 sq. ft, DECK: 317 sq. ft,  
FIREPLACE: 13 sq. ft, PORCH: 106 sq. ft, WALLS: 212 sq. ft

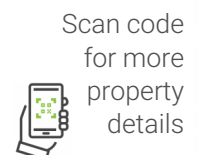
Floor Plan Created By V1photos.com. Measurements Deamed Highly Reliable But Not Guaranteed.



Disclaimer: Sizes and Dimensions are Approximate, Actual May Vary.



**Valerie Skorka Westmark**  
303-981-0950  
valeriewestmark@gmail.com  
<https://valerie-skorka.remax.com/>



Scan code  
for more  
property  
details



# 16321 Orchard Grass Lane, Parker, CO 80134 — All Levels



**TOTAL: 1605 sq. ft**

Basement 1: 266 sq. ft, 1st floor: 277 sq. ft, 2nd floor: 417 sq. ft, 3rd floor: 645 sq. ft  
EXCLUDED AREAS: UTILITY: 63 sq. ft, GARAGE: 407 sq. ft, DECK: 317 sq. ft,  
FIREPLACE: 13 sq. ft, PORCH: 106 sq. ft, WALLS: 212 sq. ft

Floor Plan Created By V1photos.com. Measurements Deamed Highly Reliable But Not Guaranteed.



Disclaimer: Sizes and Dimensions are Approximate, Actual May Vary.



**Valerie Skorka Westmark**  
303-981-0950  
valeriewestmark@gmail.com  
<https://valerie-skorka.remax.com/>



Scan code  
for more  
property  
details

