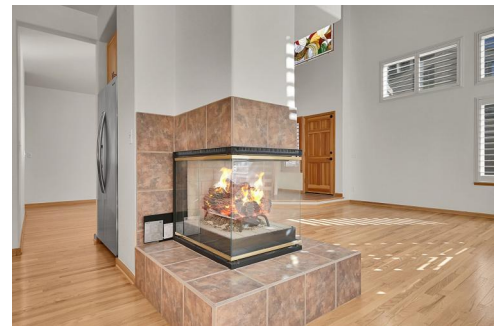


Quiet mountain living, only 30 minutes to downtown!



Single Family



2787 SQFT



3 Beds



3/1 Baths



2 Car

## PROPERTY DETAILS

Welcome to this stunning single-family home in the gated Chimney Creek community of Golden, Colorado. This spacious residence offers 3 bedrooms, 3 full bathrooms, and 1 half bathroom across 2,787 square feet. The grand foyer features high vaulted ceilings and hardwood floors. The living room, with a cozy three-sided fireplace, connects to a casual dining area and kitchen equipped with stainless steel appliances and granite countertops. The primary suite includes a gas fireplace and an ensuite bathroom with a double vanity. Outside, enjoy a beautifully landscaped yard with a large deck overlooking a seasonal creek. The community offers nearby parks, hiking trails, tennis/pickleball courts, and a swimming pool, all just 30 minutes from downtown Denver.



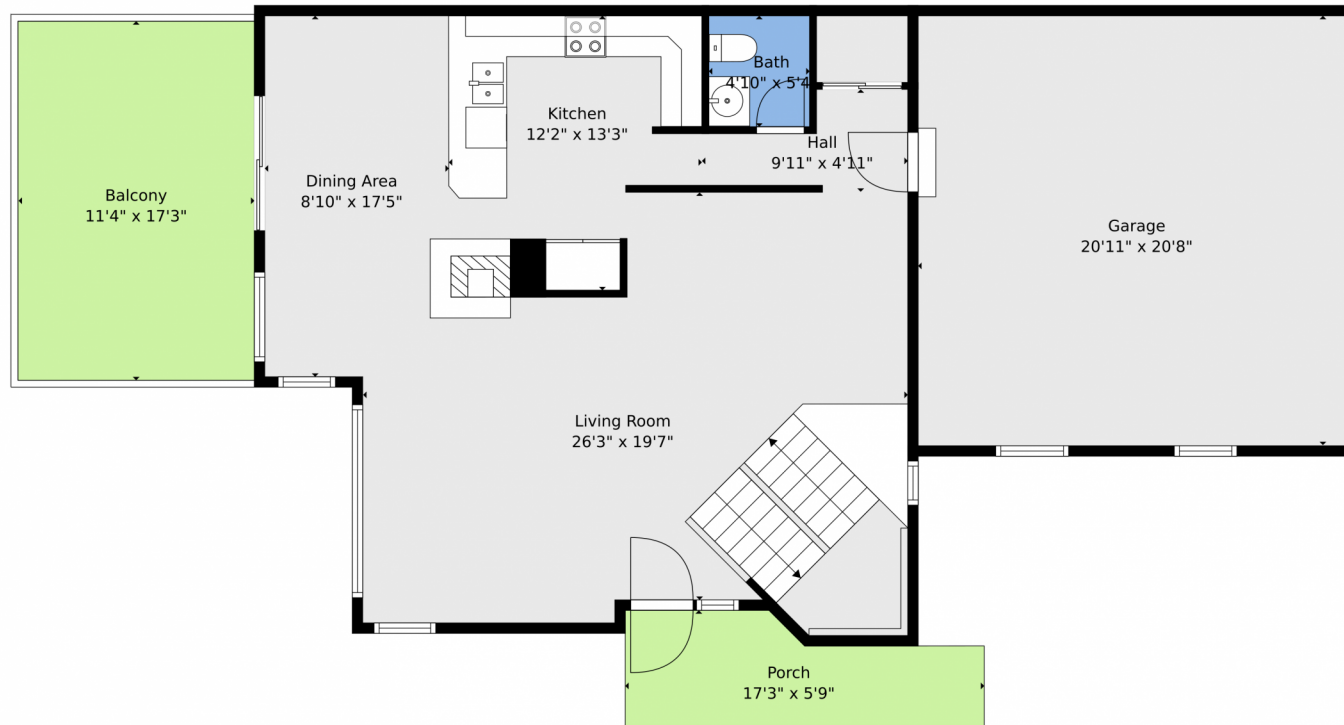
**John Wann**  
720-456-0156  
johnwann@kw.com



Scan code  
for more  
property  
details



## 671 Trailside Drive, Golden, CO 80401 — Main



**TOTAL: 2661 sq. ft**

BELOW GRADE: 775 sq. ft, 1st floor: 844 sq. ft, 2nd floor: 1042 sq. ft  
EXCLUDED AREAS: UTILITY: 36 sq. ft, PATIO: 233 sq. ft, GARAGE: 433 sq. ft,  
BALCONY: 197 sq. ft, PORCH: 83 sq. ft, OPEN TO BELOW: 213 sq. ft,  
WALLS: 201 sq. ft

Floor Plan Created By V1photos.com. Measurements Deamed Highly Reliable But Not Guaranteed.



Disclaimer: Sizes and Dimensions are Approximate, Actual May Vary.



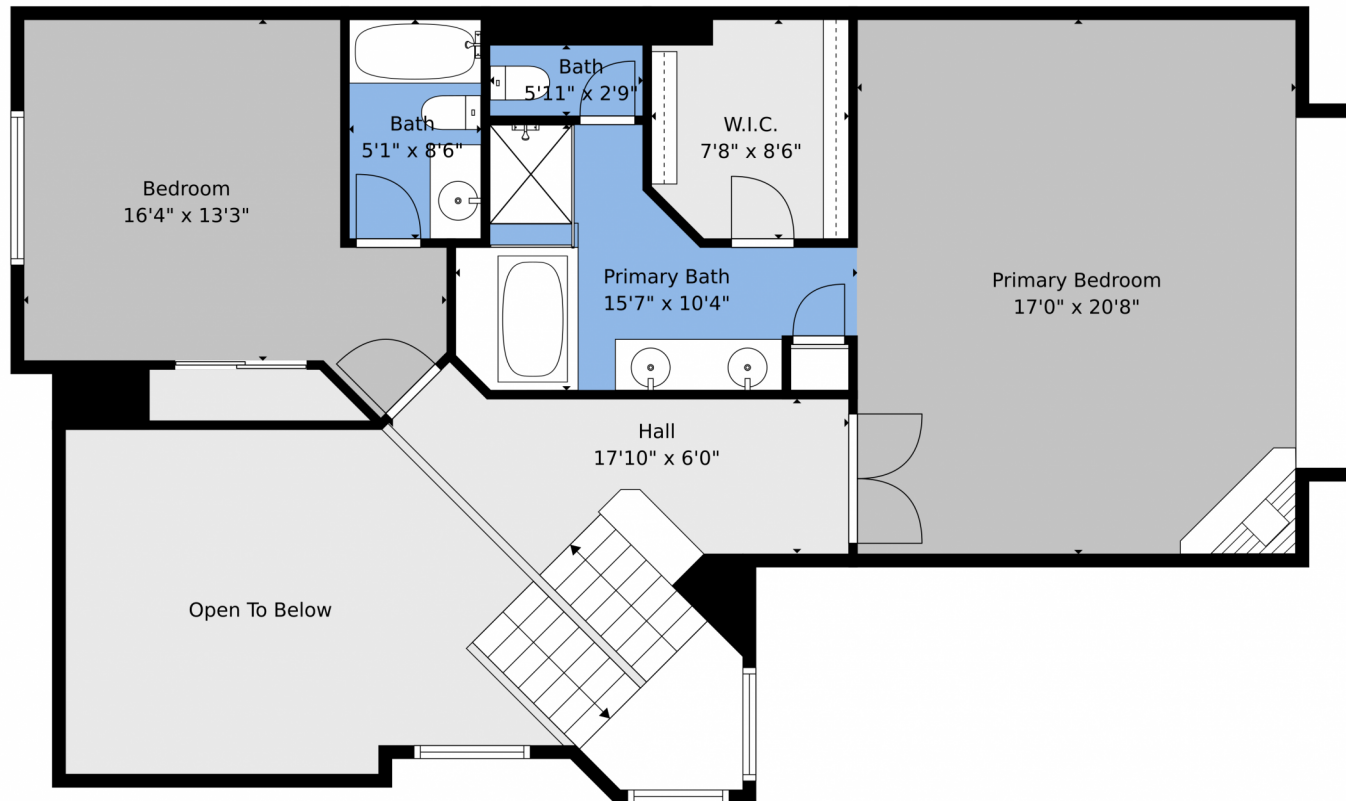
**John Wann**  
720-456-0156  
johnwann@kw.com



Scan code  
for more  
property  
details



## 671 Trailside Drive, Golden, CO 80401 – 2nd Level



**TOTAL: 2661 sq. ft**  
BELOW GRADE: 775 sq. ft, 1st floor: 844 sq. ft, 2nd floor: 1042 sq. ft  
EXCLUDED AREAS: UTILITY: 36 sq. ft, PATIO: 233 sq. ft, GARAGE: 433 sq. ft,  
BALCONY: 197 sq. ft, PORCH: 83 sq. ft, OPEN TO BELOW: 213 sq. ft,  
WALLS: 201 sq. ft

Floor Plan Created By V1photos.com. Measurements Deamed Highly Reliable But Not Guaranteed.



Disclaimer: Sizes and Dimensions are Approximate, Actual May Vary.



**John Wann**  
720-456-0156  
johnwann@kw.com



Scan code  
for more  
property  
details

