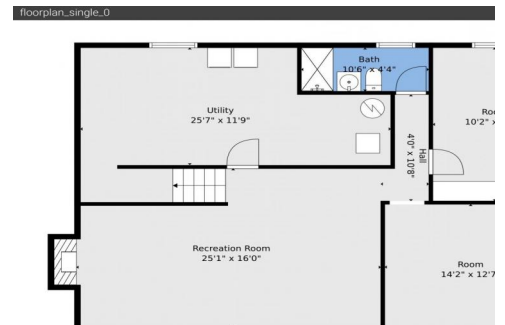
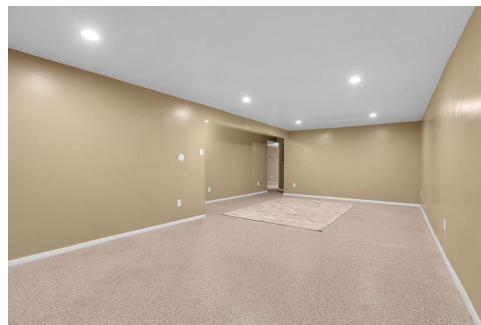


1120 South Dover Street
Lakewood, CO 80232



Single Family



1526 SQFT



4 Beds



3 Baths



1 Car



0.17 Acre

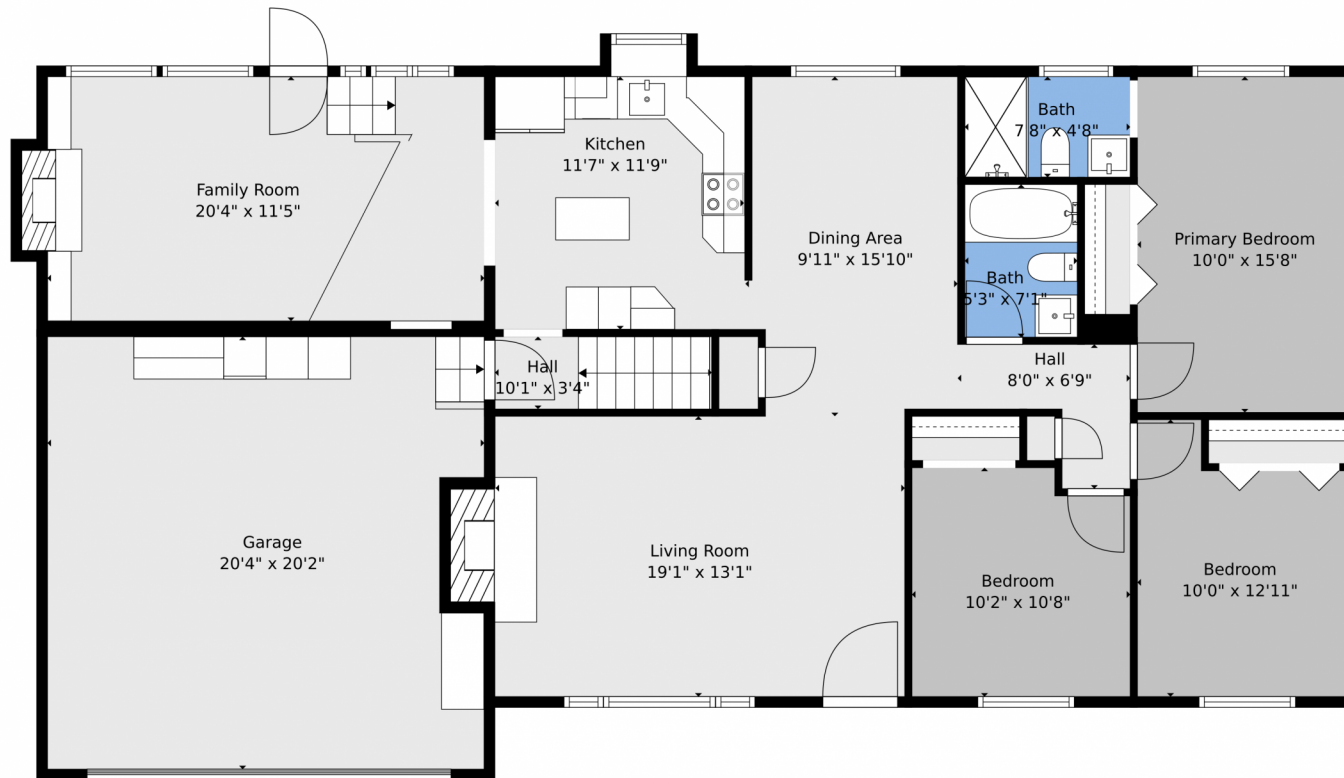
James Glassmeyer
303-507-7755
jim@capstonerealty.us.com



Scan code
for more
property
details



1120 South Dover Street, Lakewood, CO 80232 — Main



TOTAL: 2068 sq. ft
BELOW GRADE: 665 sq. ft, FLOOR 2: 1403 sq. ft
EXCLUDED AREAS: ROOM: 178 sq. ft, UTILITY: 265 sq. ft, FIREPLACE: 32 sq. ft,
GARAGE: 397 sq. ft, BAY WINDOW: 7 sq. ft, WALLS: 174 sq. ft

Floor Plan Created By V1photos.com. Measurements Deamed Highly Reliable But Not Guaranteed.



Disclaimer: Sizes and Dimensions are Approximate, Actual May Vary.

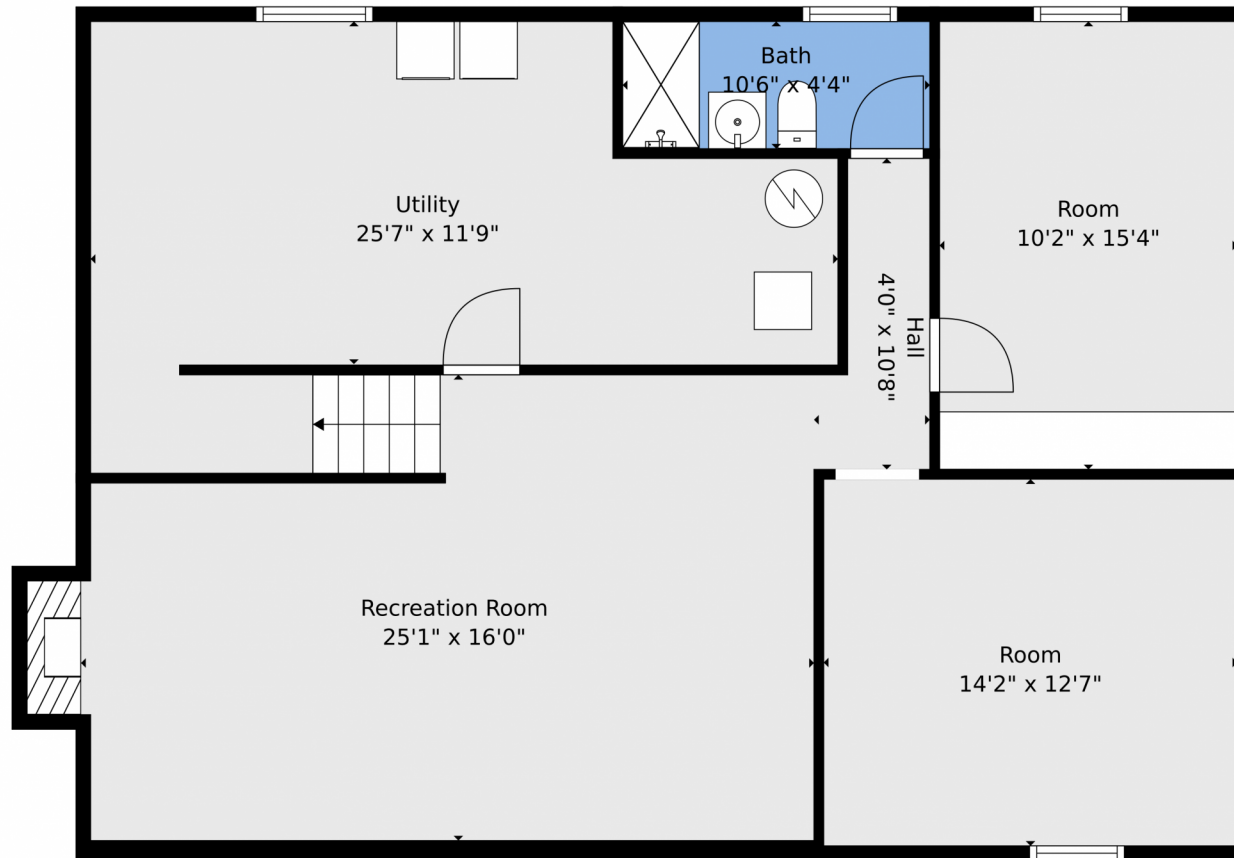
James Glassmeyer
303-507-7755
jim@capstonerealty.us.com



Scan code
for more
property
details



1120 South Dover Street, Lakewood, CO 80232 — Basement



TOTAL: 2068 sq. ft
BELOW GRADE: 665 sq. ft, FLOOR 2: 1403 sq. ft
EXCLUDED AREAS: ROOM: 178 sq. ft, UTILITY: 265 sq. ft, FIREPLACE: 32 sq. ft,
GARAGE: 397 sq. ft, BAY WINDOW: 7 sq. ft, WALLS: 174 sq. ft

Floor Plan Created By V1photos.com. Measurements Deamed Highly Reliable But Not Guaranteed.

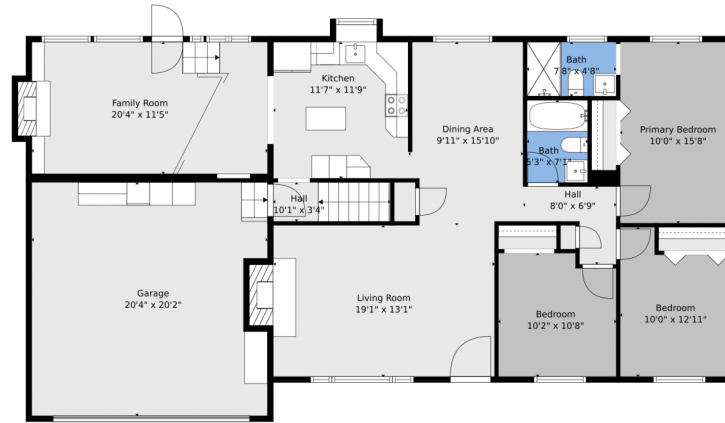


Disclaimer: Sizes and Dimensions are Approximate, Actual May Vary.

James Glassmeyer
303-507-7755
jim@capstonerealty.us.com



1120 South Dover Street, Lakewood, CO 80232 — All Levels



Floor 2



Floor 1

TOTAL: 2068 sq. ft
BELOW GRADE: 665 sq. ft, FLOOR 2: 1403 sq. ft
EXCLUDED AREAS: ROOM: 178 sq. ft, UTILITY: 265 sq. ft, FIREPLACE: 32 sq. ft,
GARAGE: 397 sq. ft, BAY WINDOW: 7 sq. ft, WALLS: 174 sq. ft

Floor Plan Created By V1photos.com. Measurements Deamed Highly Reliable But Not Guaranteed.



Disclaimer: Sizes and Dimensions are Approximate, Actual May Vary.

James Glassmeyer
303-507-7755
jim@capstonerealty.us.com

