


 Single Family

 3325 SQFT

 4 Beds

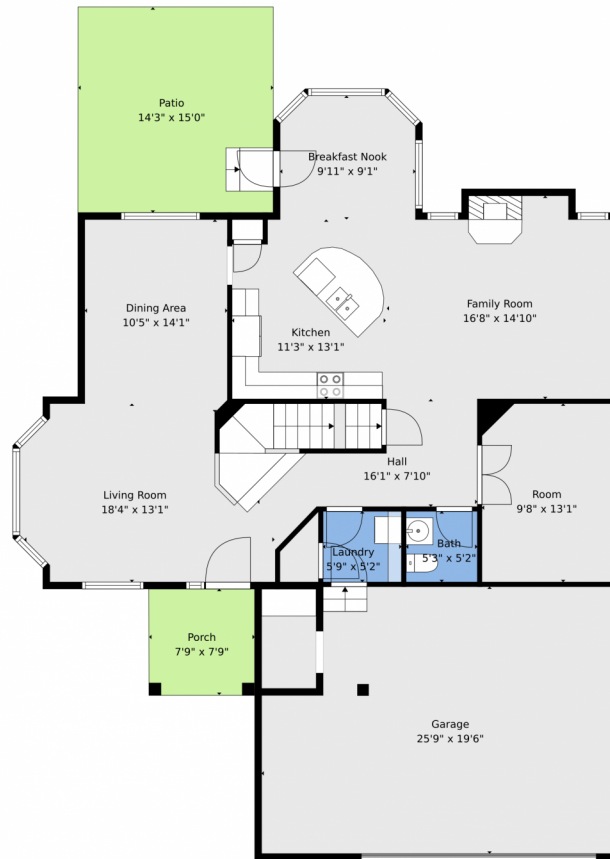
 3/1 Baths



Taylor Haas
303-665-7368
taylorh@coloradorpm.com
<https://www.coloradorpm.com/available-rental-properties-denver>



443 Webber Court, Erie, CO 80516 — Main



TOTAL: 2242 sq. ft

BELOW GROUND: 82 sq. ft, FLOOR 2: 1185 sq. ft, FLOOR 3: 975 sq. ft
EXCLUDED AREAS: UTILITY: 368 sq. ft, ROOM: 192 sq. ft, STORAGE: 75 sq. ft,
BASEMENT: 360 sq. ft, GARAGE: 468 sq. ft, UNDEFINED: 29 sq. ft,
PORCH: 60 sq. ft, PATIO: 215 sq. ft, OPEN TO BELOW: 233 sq. ft,
WALLS: 264 sq. ft

Floor Plan Created By V1photos.com. Measurements Deamed Highly Reliable But Not Guaranteed.



Disclaimer: Sizes and Dimensions are Approximate, Actual May Vary.



Taylor Haas

303-665-7368

taylorh@coloradorpm.com

<https://www.coloradorpm.com/available-rental-properties-denver>



Scan code
for more
property
details



443 Webber Court, Erie, CO 80516 — 2nd Level



TOTAL: 2242 sq. ft

BELOW GROUND: 82 sq. ft, FLOOR 2: 1185 sq. ft, FLOOR 3: 975 sq. ft
EXCLUDED AREAS: UTILITY: 368 sq. ft, ROOM: 192 sq. ft, STORAGE: 75 sq. ft,
BASEMENT: 360 sq. ft, GARAGE: 468 sq. ft, UNDEFINED: 29 sq. ft,
PORCH: 60 sq. ft, PATIO: 215 sq. ft, OPEN TO BELOW: 233 sq. ft,
WALLS: 264 sq. ft

Floor Plan Created By V1photos.com, Measurements Deamed Highly Reliable But Not Guaranteed.



Disclaimer: Sizes and Dimensions are Approximate, Actual May Vary.



Taylor Haas

303-665-7368

taylorh@coloradorpm.com

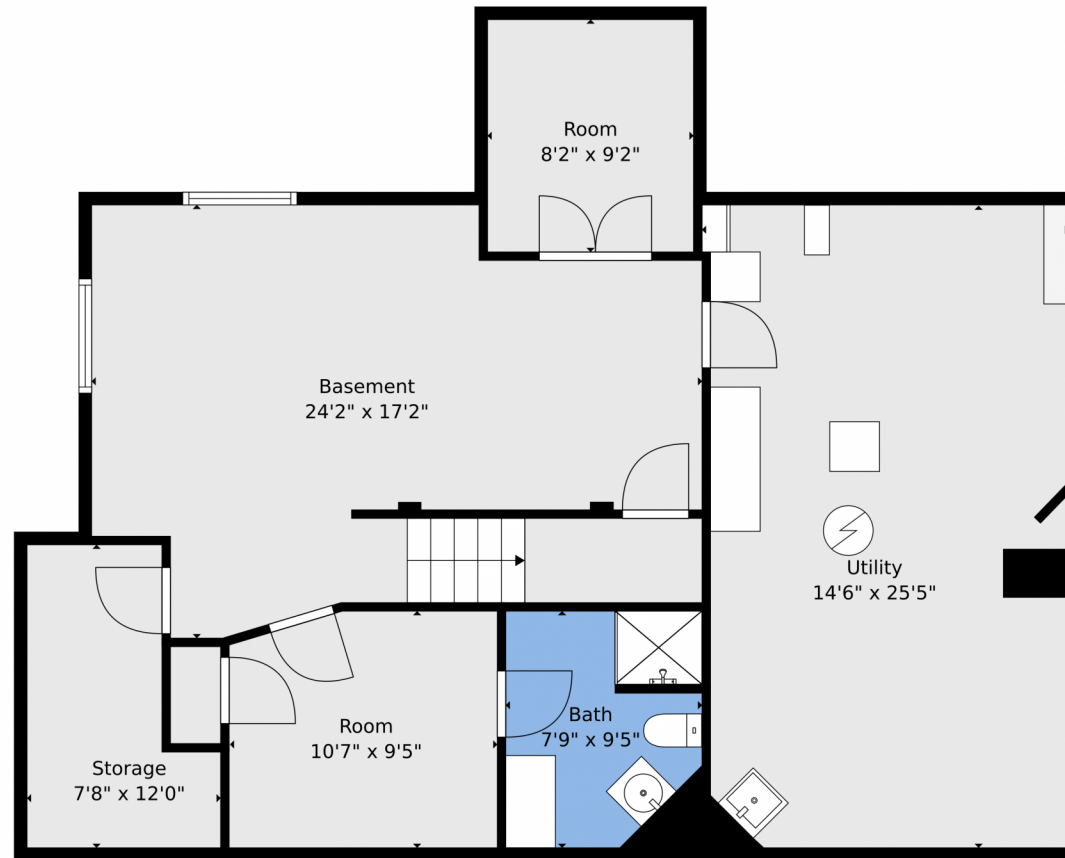
<https://www.coloradorpm.com/available-rental-properties-denver>



Scan code
for more
property
details



443 Webber Court, Erie, CO 80516 — Basement



TOTAL: 2242 sq. ft
BELOW GROUND: 82 sq. ft, FLOOR 2: 1185 sq. ft, FLOOR 3: 975 sq. ft
EXCLUDED AREAS: UTILITY: 368 sq. ft, ROOM: 192 sq. ft, STORAGE: 75 sq. ft,
BASEMENT: 360 sq. ft, GARAGE: 468 sq. ft, UNDEFINED: 29 sq. ft,
PORCH: 60 sq. ft, PATIO: 215 sq. ft, OPEN TO BELOW: 233 sq. ft,
WALLS: 264 sq. ft

Floor Plan Created By V1photos.com. Measurements Deamed Highly Reliable But Not Guaranteed.



Disclaimer: Sizes and Dimensions are Approximate, Actual May Vary.



Taylor Haas

303-665-7368

taylorh@coloradorm.com

<https://www.coloradorm.com/available-rental-properties-denver>



Scan code
for more
property
details



443 Webber Court, Erie, CO 80516 — Basement



TOTAL: 2242 sq. ft
 BELOW GROUND: 82 sq. ft, FLOOR 2: 1185 sq. ft, FLOOR 3: 975 sq. ft
 EXCLUDED AREAS: UTILITY: 368 sq. ft, ROOM: 192 sq. ft, STORAGE: 75 sq. ft,
 BASEMENT: 360 sq. ft, GARAGE: 468 sq. ft, UNDEFINED: 29 sq. ft,
 PORCH: 60 sq. ft, PATIO: 215 sq. ft, OPEN TO BELOW: 233 sq. ft,
 WALLS: 264 sq. ft

Floor Plan Created By V1photos.com, Measurements Deamed Highly Reliable But Not Guaranteed.



Disclaimer: Sizes and Dimensions are Approximate, Actual May Vary.



Taylor Haas

303-665-7368

taylorh@coloradorpm.com

<https://www.coloradorpm.com/available-rental-properties-denver>



Scan code
for more
property
details

