









34367 Highview Drive
Pine, CO 80470
COMMUNITY: Elk Falls Ranch



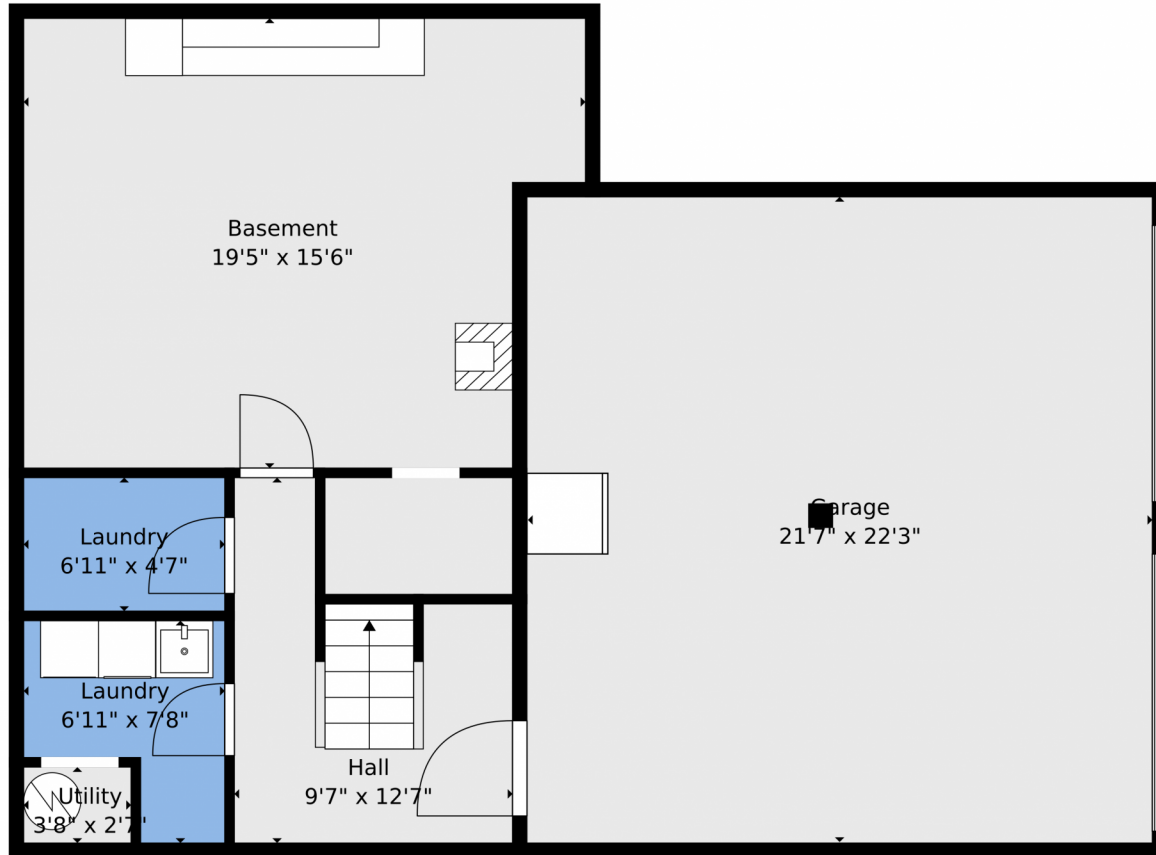
 Single Family  1680 SQFT  2 Beds  2 Baths  2 Car  1 Acre



Jodi Dolph
303-902-9968
jodi.dolph@kw.com
<https://www.TheDolphTeam.com>



34367 Highview Drive, Pine, CO 80470 – Lower Level



TOTAL: 1151 sq. ft
BELOW GRADE: 137 sq. ft, FLOOR 2: 1014 sq. ft
EXCLUDED AREAS: GARAGE: 482 sq. ft, LAUNDRY: 53 sq. ft, UNDEFINED: 28 sq. ft,
BASEMENT: 277 sq. ft, DECK: 726 sq. ft, PORCH: 270 sq. ft,
WALLS: 150 sq. ft

Floor Plan Created By V1photos.com. Measurements Deamed Highly Reliable But Not Guaranteed.



Disclaimer: Sizes and Dimensions are Approximate, Actual May Vary.



Jodi Dolph
303-902-9968
jodi.dolph@kw.com
<https://www.TheDolphTeam.com>



Scan code
for more
property
details



34367 Highview Drive, Pine, CO 80470 – Main



TOTAL: 1151 sq. ft
BELOW GRADE: 137 sq. ft, FLOOR 2: 1014 sq. ft
EXCLUDED AREAS: GARAGE: 482 sq. ft, LAUNDRY: 53 sq. ft, UNDEFINED: 28 sq. ft,
BASEMENT: 277 sq. ft, DECK: 726 sq. ft, PORCH: 270 sq. ft,
WALLS: 150 sq. ft

Floor Plan Created By V1photos.com. Measurements Deamed Highly Reliable But Not Guaranteed.



Disclaimer: Sizes and Dimensions are Approximate, Actual May Vary.



Jodi Dolph
303-902-9968
jodi.dolph@kw.com
<https://www.TheDolphTeam.com>



Scan code
for more
property
details



34367 Highview Drive, Pine, CO 80470 – All Levels



Floor 2



Floor 1

TOTAL: 1151 sq. ft
BELOW GRADE: 137 sq. ft, FLOOR 2: 1014 sq. ft
EXCLUDED AREAS: GARAGE: 482 sq. ft, LAUNDRY: 53 sq. ft, UNDEFINED: 28 sq. ft,
BASEMENT: 277 sq. ft, DECK: 726 sq. ft, PORCH: 270 sq. ft,
WALLS: 150 sq. ft

Floor Plan Created By V1photos.com. Measurements Deamed Highly Reliable But Not Guaranteed.



Disclaimer: Sizes and Dimensions are Approximate, Actual May Vary.



Jodi Dolph
303-902-9968
jodi.dolph@kw.com
<https://www.TheDolphTeam.com>



Scan code
for more
property
details

