



3433 Cripple Creek Square, #G16
Boulder, CO 80305
COMMUNITY: Shanahan Ridge Seven Condominium Association



Condominium



1064 SQFT



2 Beds



1/1 Baths



1 Car



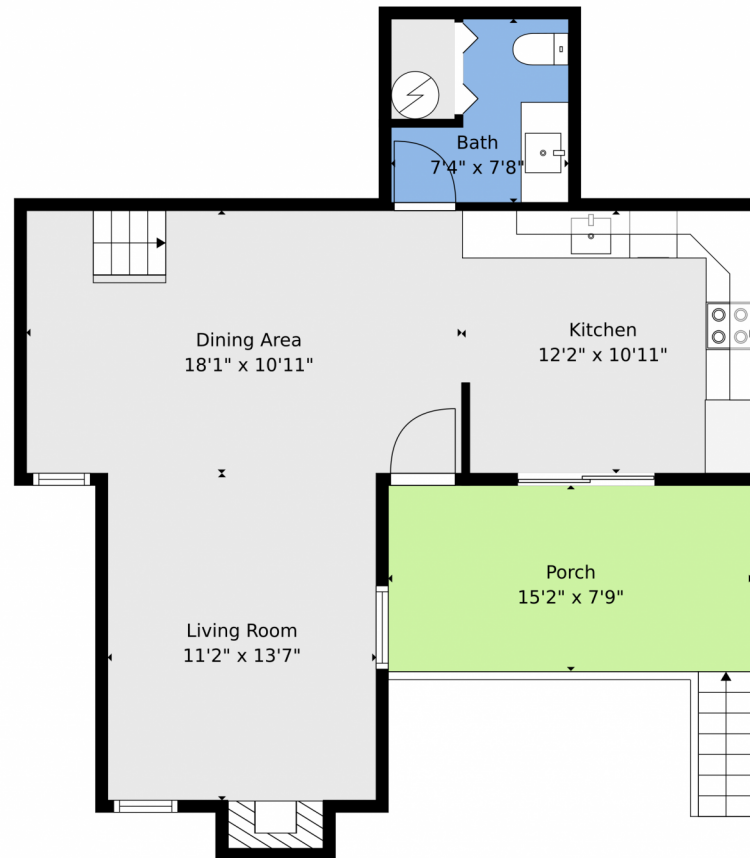
Skyler Jess
928-273-7119
skyler@theelementalgroup.com



Scan code
for more
property
details



3433 Cripple Creek Square, #G16, Boulder, CO 80305 — Main



TOTAL: 944 sq. ft
FLOOR 1: 542 sq. ft, FLOOR 2: 402 sq. ft
EXCLUDED AREAS: PORCH: 131 sq. ft, FIREPLACE: 10 sq. ft, BALCONY: 11 sq. ft,
OPEN TO BELOW: 101 sq. ft, WALLS: 130 sq. ft

Floor Plan Created By V1photos.com, Measurements Deamed Highly Reliable But Not Guaranteed.



Disclaimer: Sizes and Dimensions are Approximate, Actual May Vary.



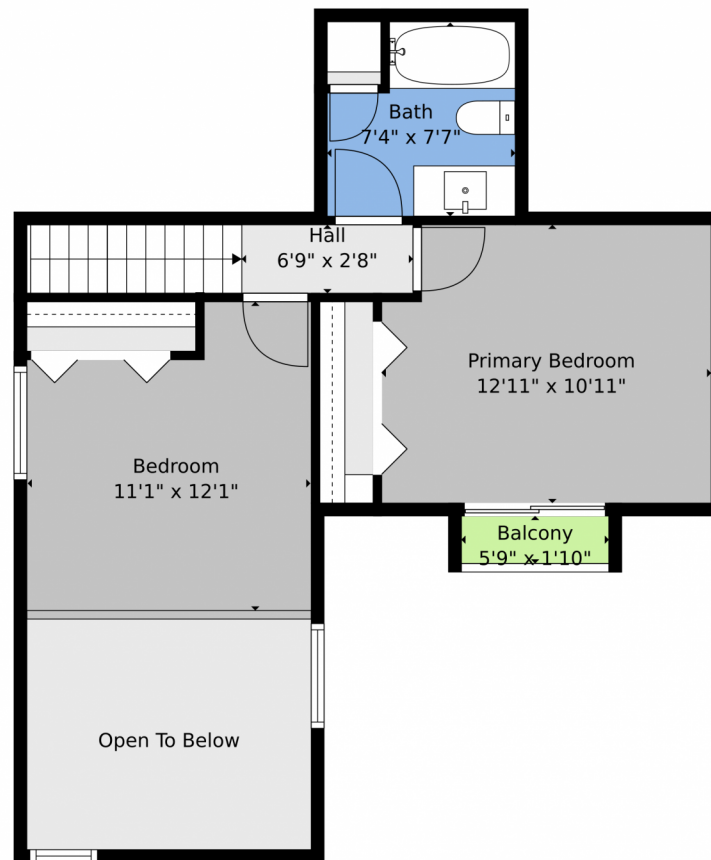
Skyler Jess
928-273-7119
skyler@theelementalgroup.com



Scan code
for more
property
details



3433 Cripple Creek Square, #G16, Boulder, CO 80305 — 2nd Level



TOTAL: 944 sq. ft
FLOOR 1: 542 sq. ft, FLOOR 2: 402 sq. ft
EXCLUDED AREAS: PORCH: 131 sq. ft, FIREPLACE: 10 sq. ft, BALCONY: 11 sq. ft,
OPEN TO BELOW: 101 sq. ft, WALLS: 130 sq. ft

Floor Plan Created By V1photos.com. Measurements Deamed Highly Reliable But Not Guaranteed.



Disclaimer: Sizes and Dimensions are Approximate, Actual May Vary.



Skyler Jess
928-273-7119
skyler@theelementalgroup.com



Scan code
for more
property
details



3433 Cripple Creek Square, #G16, Boulder, CO 80305 — All Levels



TOTAL: 944 sq. ft
FLOOR 1: 542 sq. ft, FLOOR 2: 402 sq. ft
EXCLUDED AREAS: PORCH: 131 sq. ft, FIREPLACE: 10 sq. ft, BALCONY: 11 sq. ft,
OPEN TO BELOW: 101 sq. ft, WALLS: 130 sq. ft

Floor Plan Created By V1photos.com, Measurements Deamed Highly Reliable But Not Guaranteed.

Disclaimer: Sizes and Dimensions are Approximate, Actual May Vary.



Skyler Jess
928-273-7119
skyler@theelementalgroup.com



Scan code
for more
property
details

