



Single Family



1002 SQFT



2 Beds



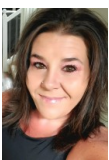
2 Baths



1 Car

PROPERTY DETAILS

Stunning 6th-floor condo in Cherry Creek with breathtaking floor-to-ceiling windows showcasing panoramic views. The bright layout features a kitchen with breakfast bar, spacious living and dining areas, and an enclosed sunroom for year-round use. The primary suite has an ensuite bath, while the secondary bedroom includes a Murphy bed for flexibility. A second full bathroom is also included. The secured building offers an outdoor detached garage and ample parking. Community amenities include a courtyard, outdoor pool, fitness center, and BBQ area. Conveniently located near Cherry Creek Trail, shopping, dining, major highways, and downtown. Move-in ready! \$2,000/month, \$2,000 security deposit.



RaNae Rodriguez
303-875-4091
ranae@mscadvisors.com
<http://www.mscadvisors.com>



Scan code
for more
property
details

