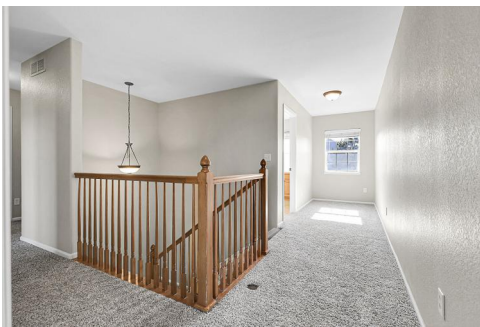


11748 Mill Valley Street  
Parker, CO 80138



Single Family



2791 SQFT



4 Beds



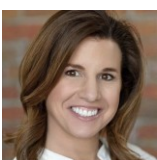
2/1 Baths



2 Car



0.11 Acre



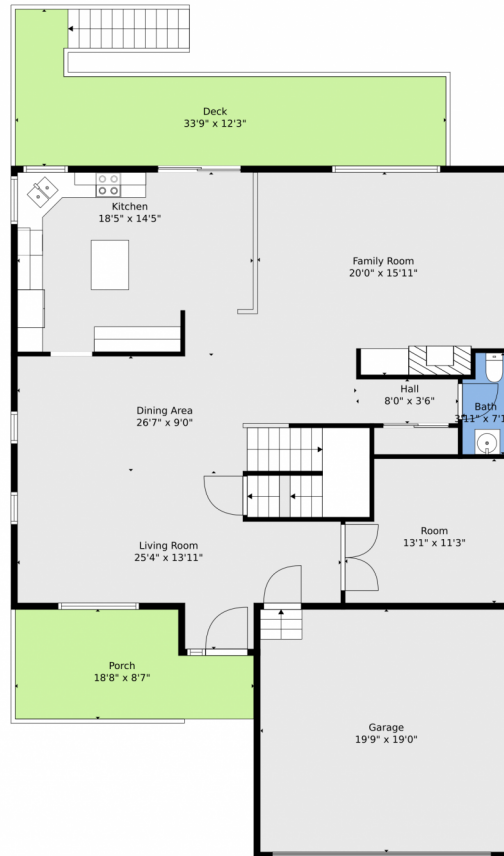
Jennifer Premac  
303-565-6155  
jen.premac@gmail.com



Scan code  
for more  
property  
details



# 11748 Mill Valley Street, Parker, CO 80138 — Main



**TOTAL: 2682 sq. ft**  
BELOW GROUND: 0 sq. ft, FLOOR 2: 1330 sq. ft, FLOOR 3: 1352 sq. ft  
EXCLUDED AREAS: BASEMENT: 1228 sq. ft, PATIO: 92 sq. ft, GARAGE: 376 sq. ft,  
DECK: 287 sq. ft, PORCH: 139 sq. ft, WALLS: 256 sq. ft

Floor Plan Created By V1photos.com, Measurements Deamed Highly Reliable But Not Guaranteed.



Disclaimer: Sizes and Dimensions are Approximate, Actual May Vary.



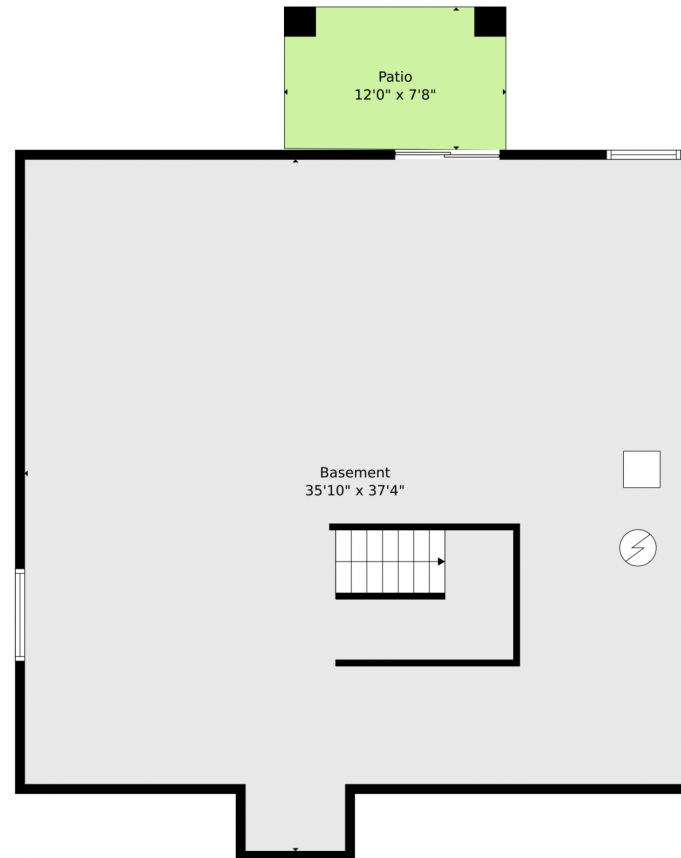
**Jennifer Premac**  
303-565-6155  
jen.premac@gmail.com



Scan code  
for more  
property  
details



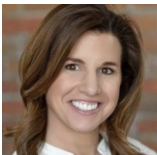
# 11748 Mill Valley Street, Parker, CO 80138 — Basement



**TOTAL: 2682 sq. ft**  
BELOW GROUND: 0 sq. ft, FLOOR 2: 1330 sq. ft, FLOOR 3: 1352 sq. ft  
EXCLUDED AREAS: BASEMENT: 1228 sq. ft, PATIO: 92 sq. ft, GARAGE: 376 sq. ft,  
DECK: 287 sq. ft, PORCH: 139 sq. ft, WALLS: 256 sq. ft  
Floor Plan Created By V1photos.com, Measurements Deamed Highly Reliable But Not Guaranteed.



Disclaimer: Sizes and Dimensions are Approximate, Actual May Vary.



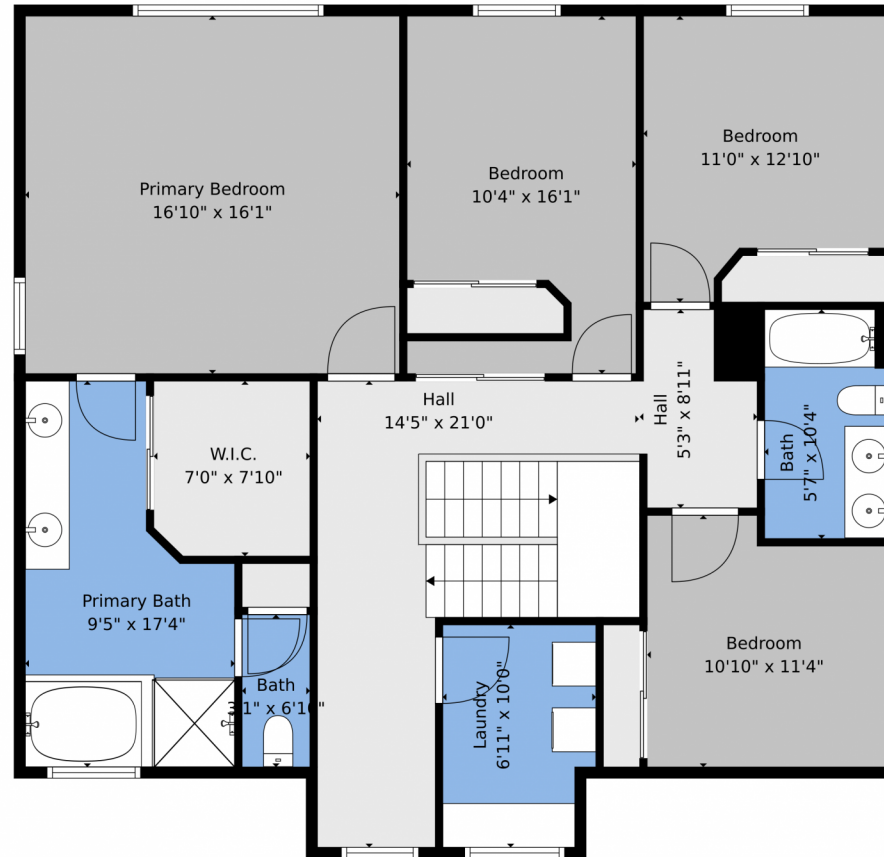
**Jennifer Premac**  
303-565-6155  
jen.premac@gmail.com



Scan code  
for more  
property  
details



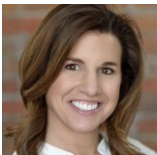
# 11748 Mill Valley Street, Parker, CO 80138 — 2nd Level



**TOTAL: 2682 sq. ft**  
BELOW GROUND: 0 sq. ft, FLOOR 2: 1330 sq. ft, FLOOR 3: 1352 sq. ft  
EXCLUDED AREAS: BASEMENT: 1228 sq. ft, PATIO: 92 sq. ft, GARAGE: 376 sq. ft,  
DECK: 287 sq. ft, PORCH: 139 sq. ft, WALLS: 256 sq. ft

Floor Plan Created By V1photos.com, Measurements Deamed Highly Reliable But Not Guaranteed.

Disclaimer: Sizes and Dimensions are Approximate, Actual May Vary.



Jennifer Premac  
303-565-6155  
jen.premac@gmail.com



# 11748 Mill Valley Street, Parker, CO 80138 — All Levels



**TOTAL: 2682 sq. ft**  
BELOW GROUND: 0 sq. ft, FLOOR 2: 1330 sq. ft, FLOOR 3: 1352 sq. ft  
EXCLUDED AREAS: BASEMENT: 1228 sq. ft, PATIO: 92 sq. ft, GARAGE: 376 sq. ft,  
DECK: 287 sq. ft, PORCH: 139 sq. ft, WALLS: 256 sq. ft

Floor Plan Created By V1photos.com, Measurements Deamed Highly Reliable But Not Guaranteed.



Disclaimer: Sizes and Dimensions are Approximate, Actual May Vary.



**Jennifer Premac**  
303-565-6155  
jen.premac@gmail.com

