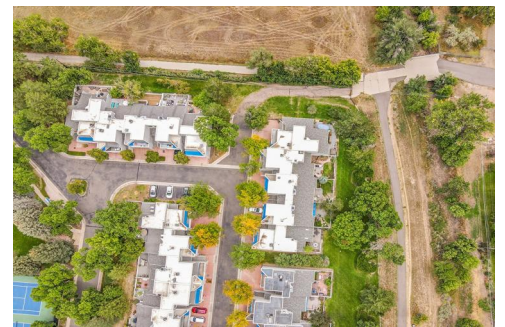


9200 Cherry Creek South Drive  
Denver, CO 80231

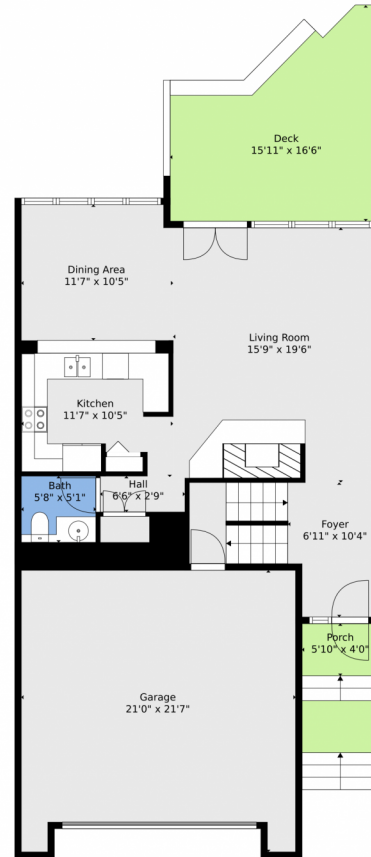


 Townhouse  2300 SQFT

Trish Kelly  
720-331-6377  
trish@trishkelly.com



# 9200 Cherry Creek South Drive, Denver, CO 80231 — Main



**TOTAL: 2290 sq. ft**  
BELOW GROUND: 635 sq. ft, FLOOR 2: 745 sq. ft, FLOOR 3: 438 sq. ft, FLOOR 4: 472 sq. ft  
EXCLUDED AREAS: STORAGE: 23 sq. ft, UTILITY: 55 sq. ft, GARAGE: 414 sq. ft,  
DECK: 210 sq. ft, PORCH: 74 sq. ft, BALCONY: 168 sq. ft,  
OPEN TO BELOW: 18 sq. ft, WALLS: 209 sq. ft

Floor Plan Created By V1photos.com, Measurements Deamed Highly Reliable But Not Guaranteed.



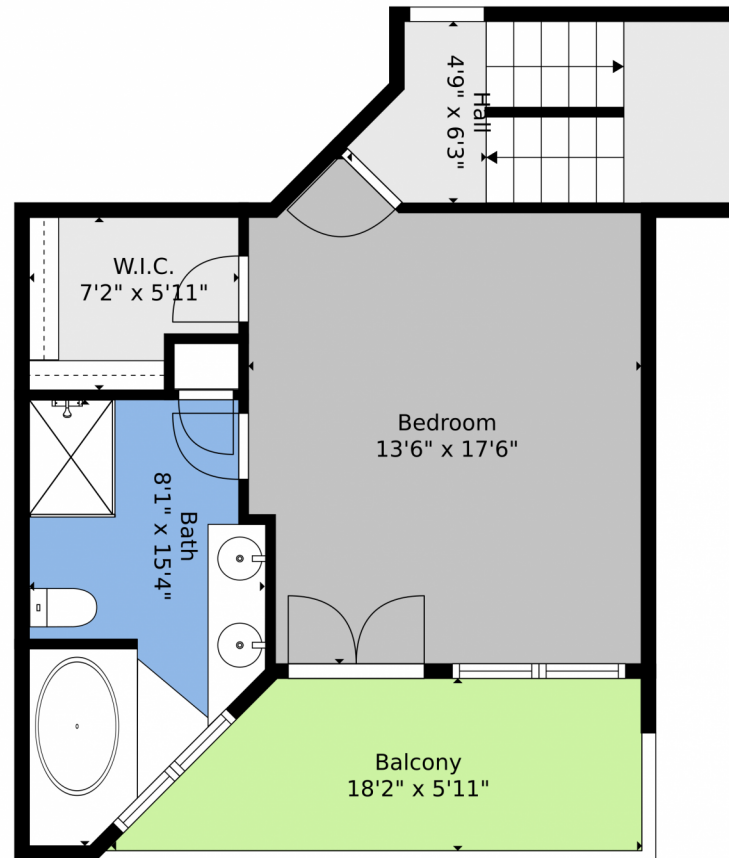
Disclaimer: Sizes and Dimensions are Approximate, Actual May Vary.

Trish Kelly  
720-331-6377  
trish@trishkelly.com





## 9200 Cherry Creek South Drive, Denver, CO 80231 — 2nd Level



**TOTAL: 2290 sq. ft**  
BELOW GROUND: 635 sq. ft, FLOOR 2: 745 sq. ft, FLOOR 3: 438 sq. ft, FLOOR 4: 472 sq. ft  
EXCLUDED AREAS: STORAGE: 23 sq. ft, UTILITY: 55 sq. ft, GARAGE: 414 sq. ft,  
DECK: 210 sq. ft, PORCH: 74 sq. ft, BALCONY: 168 sq. ft,  
OPEN TO BELOW: 18 sq. ft, WALLS: 209 sq. ft

Floor Plan Created By V1photos.com, Measurements Deamed Highly Reliable But Not Guaranteed.

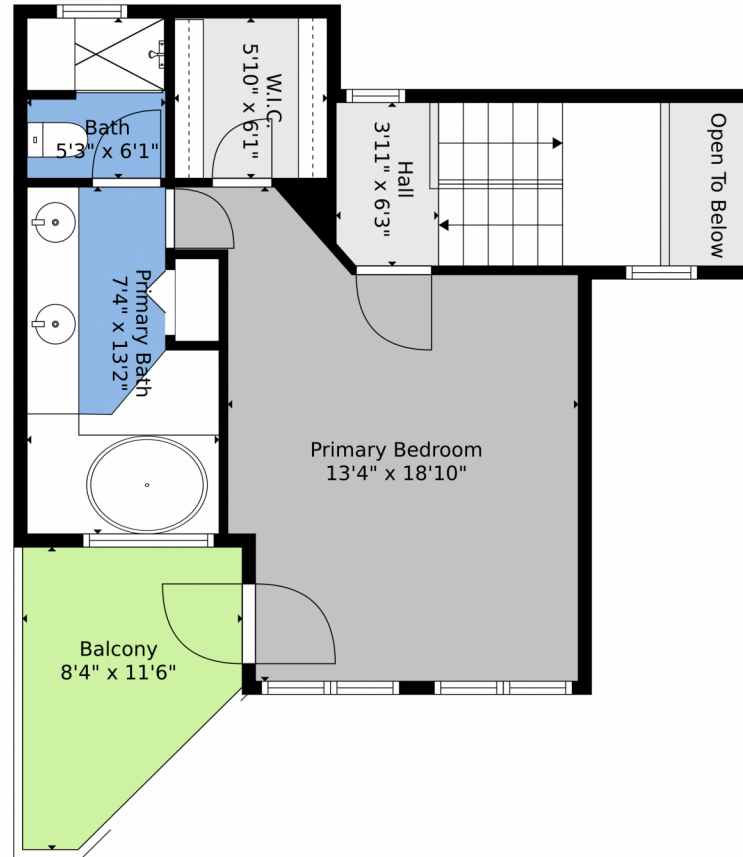


Disclaimer: Sizes and Dimensions are Approximate, Actual May Vary.

Trish Kelly  
720-331-6377  
trish@trishkelly.com



## 9200 Cherry Creek South Drive, Denver, CO 80231 — 3rd Level



**TOTAL: 2290 sq. ft**  
BELOW GROUND: 635 sq. ft, FLOOR 2: 745 sq. ft, FLOOR 3: 438 sq. ft, FLOOR 4: 472 sq. ft  
EXCLUDED AREAS: STORAGE: 23 sq. ft, UTILITY: 55 sq. ft, GARAGE: 414 sq. ft,  
DECK: 210 sq. ft, PORCH: 74 sq. ft, BALCONY: 168 sq. ft,  
OPEN TO BELOW: 18 sq. ft, WALLS: 209 sq. ft

Floor Plan Created By V1photos.com, Measurements Deamed Highly Reliable But Not Guaranteed.

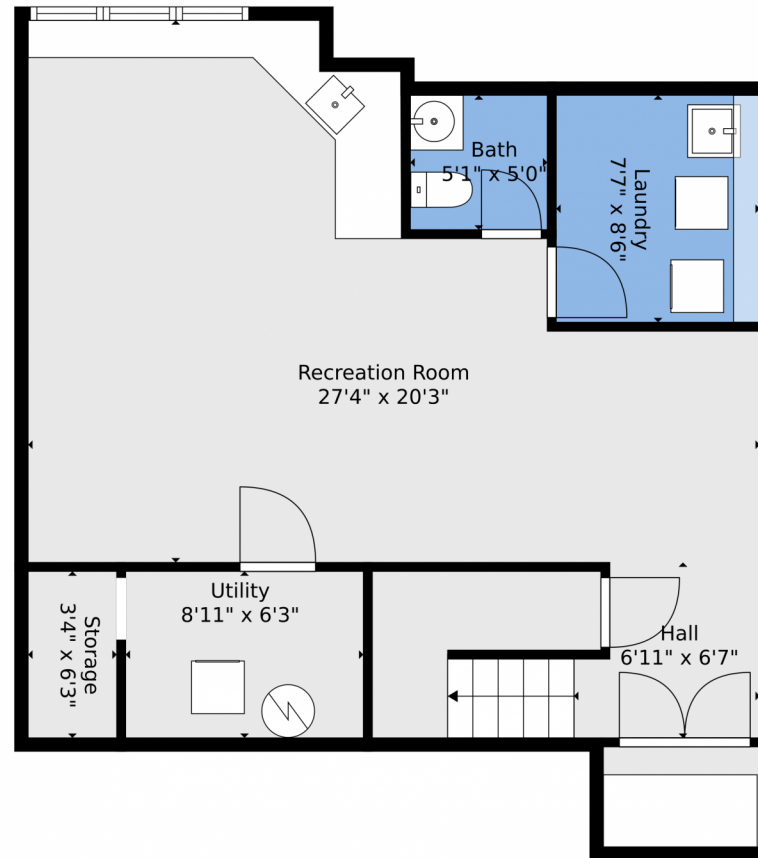


Disclaimer: Sizes and Dimensions are Approximate, Actual May Vary.

Trish Kelly  
720-331-6377  
trish@trishkelly.com



## 9200 Cherry Creek South Drive, Denver, CO 80231 — Lower Level



**TOTAL: 2290 sq. ft**  
BELOW GROUND: 635 sq. ft, FLOOR 2: 745 sq. ft, FLOOR 3: 438 sq. ft, FLOOR 4: 472 sq. ft  
EXCLUDED AREAS: STORAGE: 23 sq. ft, UTILITY: 55 sq. ft, GARAGE: 414 sq. ft,  
DECK: 210 sq. ft, PORCH: 74 sq. ft, BALCONY: 168 sq. ft,  
OPEN TO BELOW: 18 sq. ft, WALLS: 209 sq. ft

Floor Plan Created By V1photos.com, Measurements Deamed Highly Reliable But Not Guaranteed.



Disclaimer: Sizes and Dimensions are Approximate, Actual May Vary.

Trish Kelly  
720-331-6377  
trish@trishkelly.com



# 9200 Cherry Creek South Drive, Denver, CO 80231 — All Levels



**TOTAL: 2290 sq. ft**  
 BELOW GROUND: 635 sq. ft, FLOOR 2: 745 sq. ft, FLOOR 3: 438 sq. ft, FLOOR 4: 472 sq. ft  
 EXCLUDED AREAS: STORAGE: 23 sq. ft, UTILITY: 55 sq. ft, GARAGE: 414 sq. ft,  
 DECK: 210 sq. ft, PORCH: 74 sq. ft, BALCONY: 168 sq. ft,  
 OPEN TO BELOW: 18 sq. ft, WALLS: 209 sq. ft

Floor Plan Created By V1photos.com, Measurements Deamed Highly Reliable But Not Guaranteed.



Disclaimer: Sizes and Dimensions are Approximate, Actual May Vary.

Trish Kelly  
 720-331-6377  
 trish@trishkelly.com

