



12455 North Spring Creek Road  
Parker, CO 80138



Single Family



4699 SQFT



4 Beds



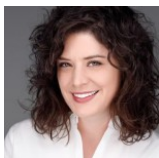
3/1 Baths



3 Car



3.45 Acre



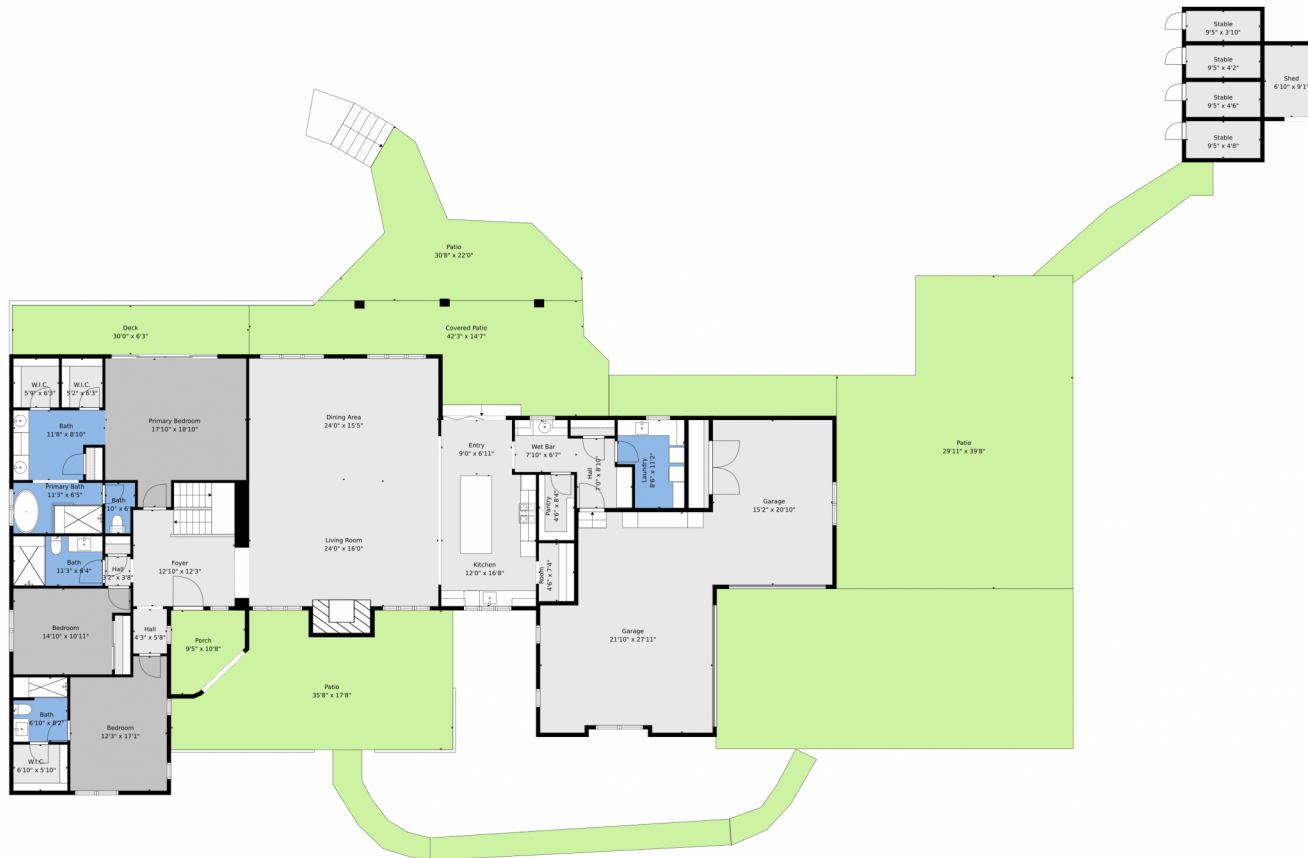
Rachel Chaparro  
303-204-7528  
rachel@graceandsky.com



Scan code  
for more  
property  
details



# 12455 North Spring Creek Road, Parker, CO 80138 — Main

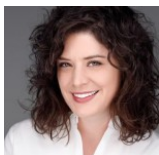


**TOTAL: 5237 sq. ft**  
BELOW GROUND: 997 sq. ft, FLOOR 2: 1535 sq. ft, FLOOR 3: 2705 sq. ft  
EXCLUDED AREAS: SHED: 135 sq. ft, COVERED PATIO: 1430 sq. ft, UTILITY: 82 sq. ft,  
STORAGE: 192 sq. ft, PATIO: 5308 sq. ft, COVERED DECK: 115 sq. ft,  
DECK: 1105 sq. ft, PORCH: 82 sq. ft, UNDEFINED: 29 sq. ft,  
STABLE: 161 sq. ft, GARAGE: 863 sq. ft, FIREPLACE: 28 sq. ft,  
WALLS: 527 sq. ft

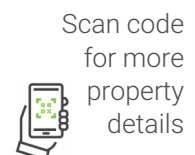
Floor Plan Created By V1photos.com, Measurements Deamed Highly Reliable But Not Guaranteed.



Disclaimer: Sizes and Dimensions are Approximate, Actual May Vary.



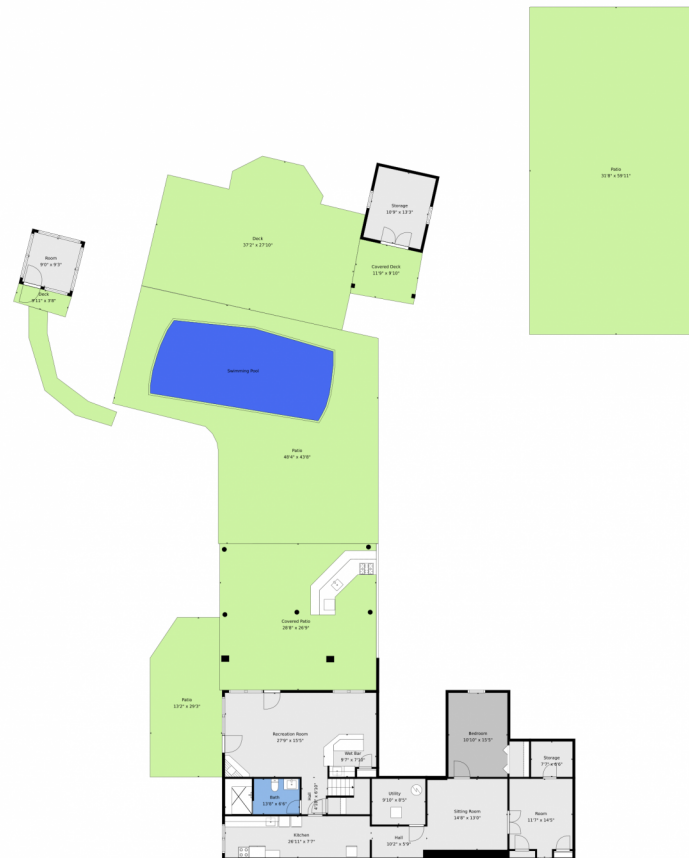
**Rachel Chaparro**  
303-204-7528  
rachel@graceandsky.com



Scan code  
for more  
property  
details



# 12455 North Spring Creek Road, Parker, CO 80138 — Lower Level

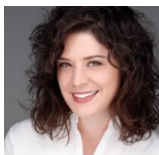


**TOTAL: 5237 sq. ft**  
BELOW GROUND: 997 sq. ft, FLOOR 2: 1535 sq. ft, FLOOR 3: 2705 sq. ft  
EXCLUDED AREAS: SHED: 135 sq. ft, COVERED PATIO: 1430 sq. ft, UTILITY: 82 sq. ft,  
STORAGE: 192 sq. ft, PATIO: 5308 sq. ft, COVERED DECK: 115 sq. ft,  
DECK: 1105 sq. ft, PORCH: 82 sq. ft, UNDEFINED: 29 sq. ft,  
STABLE: 161 sq. ft, GARAGE: 863 sq. ft, FIREPLACE: 28 sq. ft,  
WALLS: 527 sq. ft

Floor Plan Created By V1photos.com, Measurements Deamed Highly Reliable But Not Guaranteed.



Disclaimer: Sizes and Dimensions are Approximate, Actual May Vary.



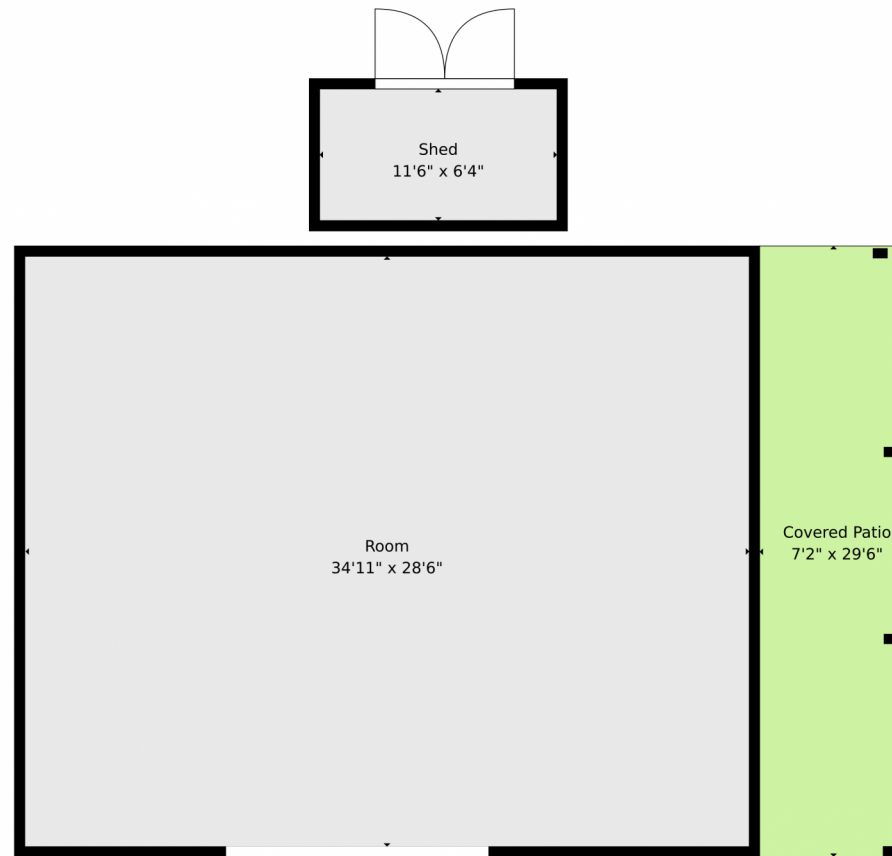
**Rachel Chaparro**  
303-204-7528  
rachel@graceandsky.com



Scan code  
for more  
property  
details



# 12455 North Spring Creek Road, Parker, CO 80138 — Detached Garage

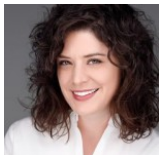


**TOTAL: 5237 sq. ft**  
BELOW GROUND: 997 sq. ft, FLOOR 2: 1535 sq. ft, FLOOR 3: 2705 sq. ft  
EXCLUDED AREAS: SHED: 135 sq. ft, COVERED PATIO: 1430 sq. ft, UTILITY: 82 sq. ft,  
STORAGE: 192 sq. ft, PATIO: 5308 sq. ft, COVERED DECK: 115 sq. ft,  
DECK: 1105 sq. ft, PORCH: 82 sq. ft, UNDEFINED: 29 sq. ft,  
STABLE: 161 sq. ft, GARAGE: 863 sq. ft, FIREPLACE: 28 sq. ft,  
WALLS: 527 sq. ft

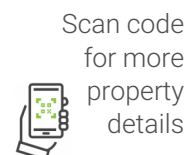
Floor Plan Created By V1photos.com, Measurements Deamed Highly Reliable But Not Guaranteed.



Disclaimer: Sizes and Dimensions are Approximate, Actual May Vary.



**Rachel Chaparro**  
303-204-7528  
rachel@graceandsky.com

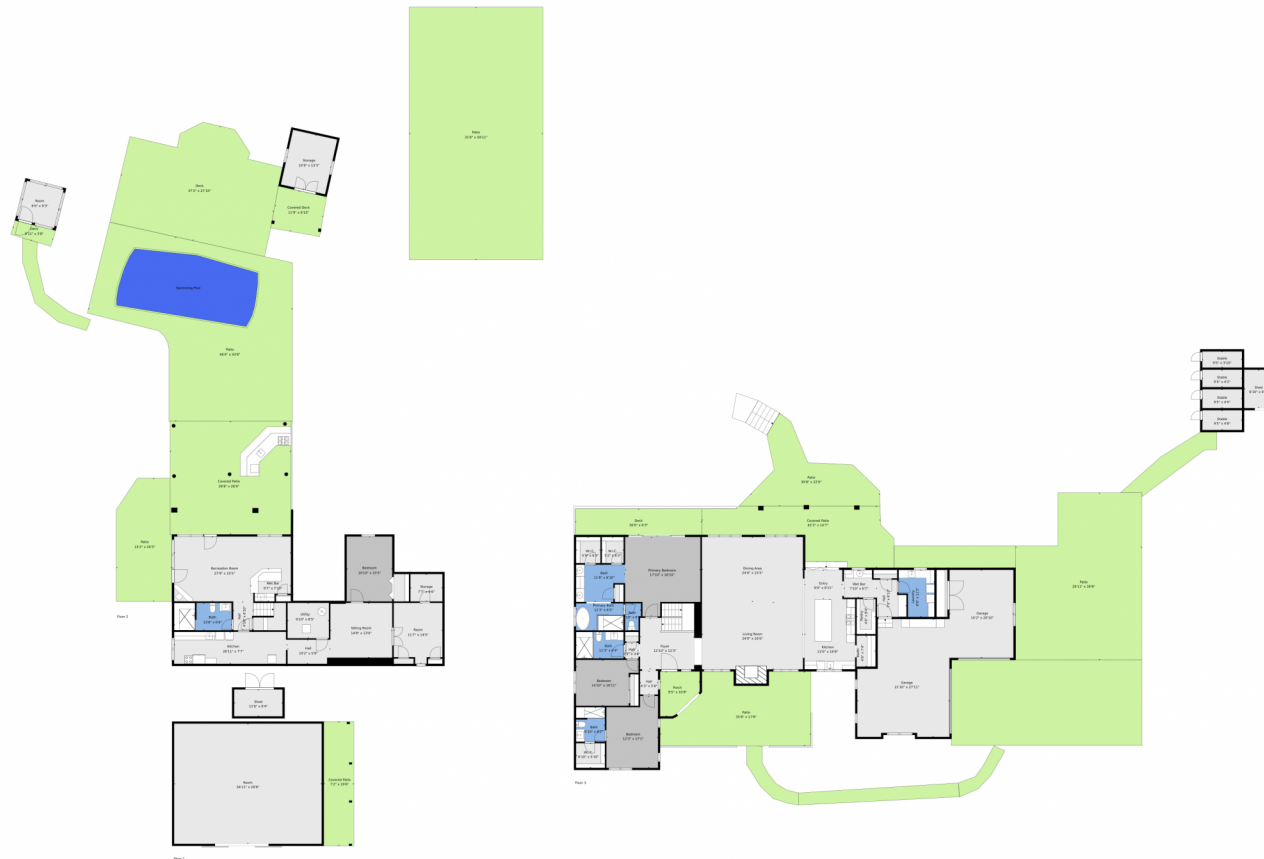


Scan code  
for more  
property  
details





# 12455 North Spring Creek Road, Parker, CO 80138 — All Levels



**TOTAL: 5237 sq. ft**  
BELOW GROUND: 997 sq. ft, FLOOR 2: 1535 sq. ft, FLOOR 3: 2705 sq. ft,  
EXCLUDED AREAS: SHED: 135 sq. ft, COVERED PATIO: 1430 sq. ft, UTILITY: 82 sq. ft,  
STORAGE: 192 sq. ft, PATIO: 5308 sq. ft, COVERED DECK: 115 sq. ft,  
DECK: 1105 sq. ft, PORCH: 82 sq. ft, UNDEFINED: 29 sq. ft,  
STABLE: 161 sq. ft, GARAGE: 863 sq. ft, FIREPLACE: 28 sq. ft,  
WALLS: 527 sq. ft

Floor Plan Created By V1photos.com, Measurements Deamed Highly Reliable But Not Guaranteed.



Disclaimer: Sizes and Dimensions are Approximate, Actual May Vary.



Rachel Chaparro  
303-204-7528  
rachel@graceandsky.com

