

## "Future-rustic" Log Home-Must See!



Single Family



3774 SQFT



4 Beds



3 Baths



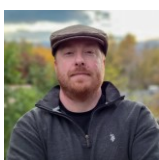
2 Car



15.66 Acre

## PROPERTY DETAILS

Located in the peaceful Deer Creek/South Turkey Creek area of Littleton, this stunning 4-bedroom, 3-bath log home on over 15 acres of horse property offers modern amenities and Colorado charm. Features include vaulted ceilings, beetle-kill pine accents, a stone fireplace, and an open floor plan connecting the living room, dining area, and gourmet kitchen with stone counters and custom cabinetry. The home is smart-wired, includes a wine cellar, and has a high-efficiency heating system. A finished walkout basement provides extra storage and a private guest suite. Outdoors, enjoy a new deck, a lavender field, garden beds, and RV parking. With mountain views and access to trails, this property is a perfect Colorado retreat.



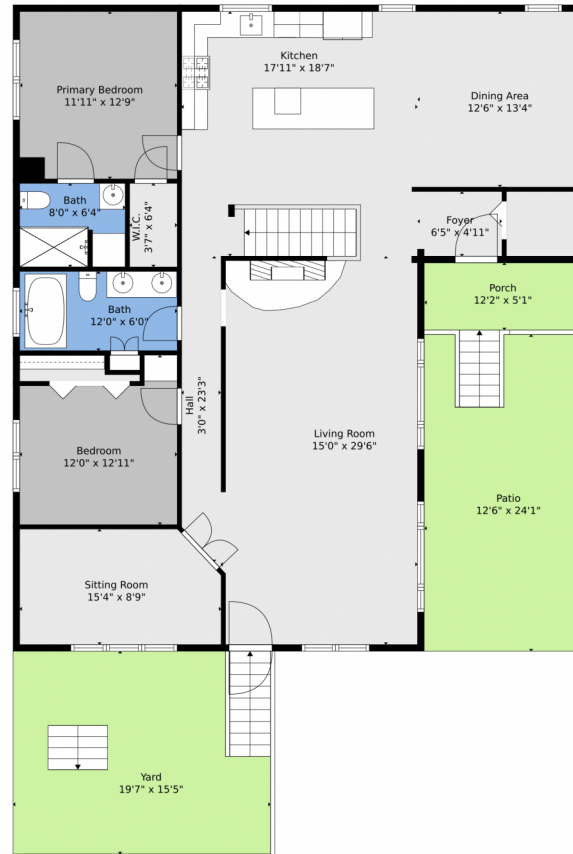
**Nic Connolly**  
720-850-9433  
nic@neighborhoodhometeam.com



Scan code  
for more  
property  
details



# 11953 S Maxwell Hill Road, Littleton, CO 80127 — Main



**TOTAL: 3088 sq. ft**  
FLOOR 1: 1399 sq. ft, FLOOR 2: 1689 sq. ft  
EXCLUDED AREAS: ROOM: 186 sq. ft, GARAGE: 522 sq. ft, UTILITY: 98 sq. ft,  
PATIO: 281 sq. ft, PORCH: 80 sq. ft, WALLS: 235 sq. ft

Floor Plan Created By V1photos.com, Measurements Deamed Highly Reliable But Not Guaranteed.



Disclaimer: Sizes and Dimensions are Approximate, Actual May Vary.



**Nic Connolly**  
720-850-9433  
[nic@neighborhoodhometeam.com](mailto:nic@neighborhoodhometeam.com)



# 11953 S Maxwell Hill Road, Littleton, CO 80127 — Lower Level



**TOTAL: 3088 sq. ft**  
FLOOR 1: 1399 sq. ft, FLOOR 2: 1689 sq. ft  
EXCLUDED AREAS: ROOM: 186 sq. ft, GARAGE: 522 sq. ft, UTILITY: 98 sq. ft,  
PATIO: 281 sq. ft, PORCH: 80 sq. ft, WALLS: 235 sq. ft

Floor Plan Created By V1photos.com, Measurements Deamed Highly Reliable But Not Guaranteed.



Disclaimer: Sizes and Dimensions are Approximate, Actual May Vary.



**Nic Connolly**  
720-850-9433  
nic@neighborhoodhometeam.com





# 11953 S Maxwell Hill Road, Littleton, CO 80127 — All Levels

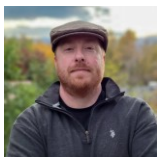


**TOTAL: 3088 sq. ft**  
FLOOR 1: 1399 sq. ft, FLOOR 2: 1689 sq. ft  
EXCLUDED AREAS: ROOM: 186 sq. ft, GARAGE: 522 sq. ft, UTILITY: 98 sq. ft,  
PATIO: 281 sq. ft, PORCH: 80 sq. ft, WALLS: 235 sq. ft

Floor Plan Created By V1photos.com, Measurements Deamed Highly Reliable But Not Guaranteed.



Disclaimer: Sizes and Dimensions are Approximate, Actual May Vary.



**Nic Connolly**  
720-850-9433  
nic@neighborhoodhometeam.com

