



Condominium



1577 SQFT



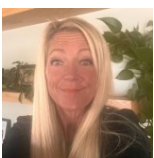
2 Beds



2/1 Baths



2 Car



Kristine Heller

303-285-1568

leasing@elevatedpmc.com

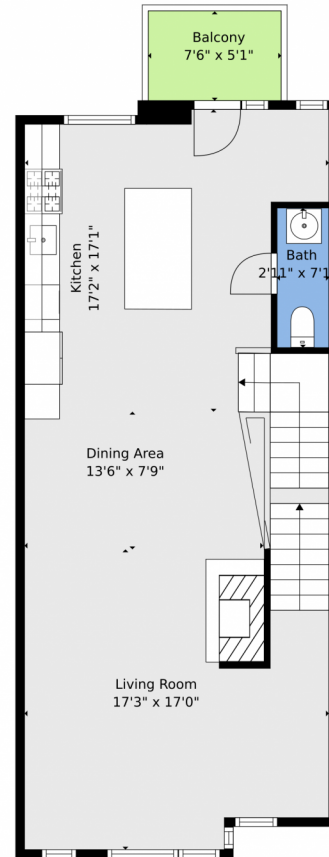
<https://www.elevatedpmc.com/>



Scan code
for more
property
details



2345 Walnut Street, Denver, CO 80205 — Main Level



TOTAL: 1553 sq. ft
BELOW GROUND: 106 sq. ft, FLOOR 2: 705 sq. ft, FLOOR 3: 742 sq. ft, FLOOR 4: 0 sq. ft
EXCLUDED AREAS: UTILITY: 18 sq. ft, GARAGE: 511 sq. ft, PORCH: 44 sq. ft,
BALCONY: 38 sq. ft, TERRACE: 740 sq. ft, WALLS: 134 sq. ft

Floor Plan Created By V1photos.com, Measurements Deamed Highly Reliable But Not Guaranteed.



Disclaimer: Sizes and Dimensions are Approximate, Actual May Vary.



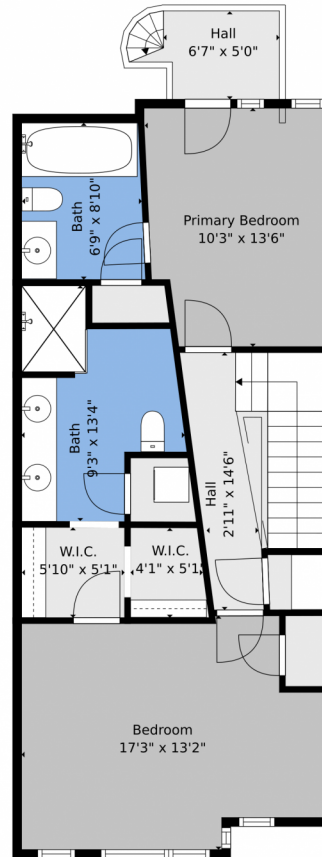
Kristine Heller
303-285-1568
leasing@elevatedpmc.com
<https://www.elevatedpmc.com/>



Scan code
for more
property
details



2345 Walnut Street, Denver, CO 80205 — 2nd Level



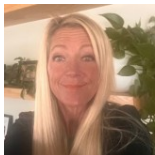
TOTAL: 1553 sq. ft

BELOW GROUND: 106 sq. ft, FLOOR 2: 705 sq. ft, FLOOR 3: 742 sq. ft, FLOOR 4: 0 sq. ft
EXCLUDED AREAS: UTILITY: 18 sq. ft, GARAGE: 511 sq. ft, PORCH: 44 sq. ft,
BALCONY: 38 sq. ft, TERRACE: 740 sq. ft, WALLS: 134 sq. ft

Floor Plan Created By V1photos.com, Measurements Deamed Highly Reliable But Not Guaranteed.



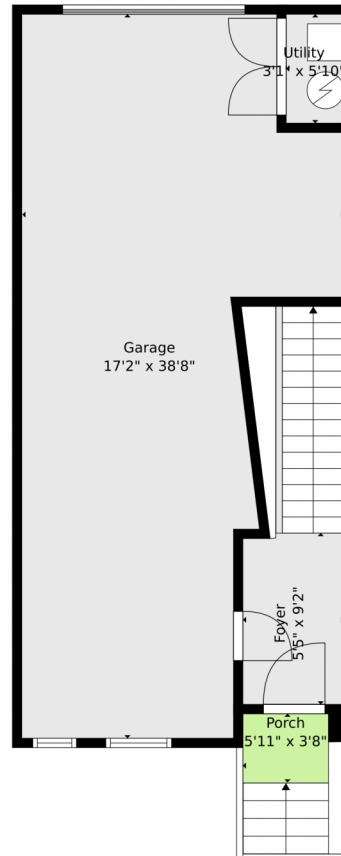
Disclaimer: Sizes and Dimensions are Approximate, Actual May Vary.



Kristine Heller
303-285-1568
leasing@elevatedpmc.com
<https://www.elevatedpmc.com/>



2345 Walnut Street, Denver, CO 80205 — Lower Level



TOTAL: 1553 sq. ft
BELOW GROUND: 106 sq. ft, FLOOR 2: 705 sq. ft, FLOOR 3: 742 sq. ft, FLOOR 4: 0 sq. ft
EXCLUDED AREAS: UTILITY: 18 sq. ft, GARAGE: 511 sq. ft, PORCH: 44 sq. ft,
BALCONY: 38 sq. ft, TERRACE: 740 sq. ft, WALLS: 134 sq. ft

Floor Plan Created By V1photos.com, Measurements Deamed Highly Reliable But Not Guaranteed.



Disclaimer: Sizes and Dimensions are Approximate, Actual May Vary.



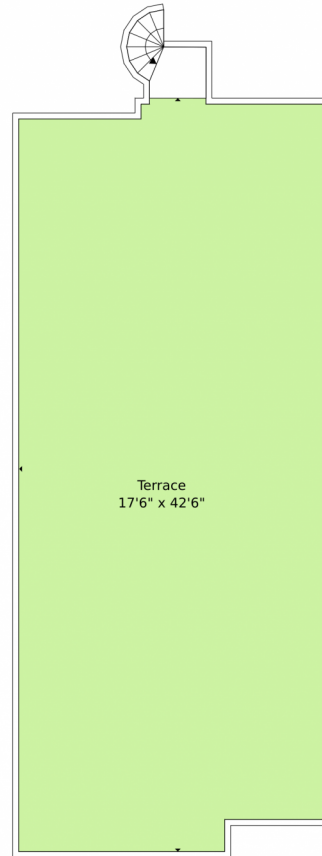
Kristine Heller
303-285-1568
leasing@elevatedpmc.com
<https://www.elevatedpmc.com/>



Scan code
for more
property
details



2345 Walnut Street, Denver, CO 80205 — Rooftop Patio



TOTAL: 1553 sq. ft
BELOW GROUND: 106 sq. ft, FLOOR 2: 705 sq. ft, FLOOR 3: 742 sq. ft, FLOOR 4: 0 sq. ft
EXCLUDED AREAS: UTILITY: 18 sq. ft, GARAGE: 511 sq. ft, PORCH: 44 sq. ft,
BALCONY: 38 sq. ft, TERRACE: 740 sq. ft, WALLS: 134 sq. ft

Floor Plan Created By V1photos.com, Measurements Deamed Highly Reliable But Not Guaranteed.



Disclaimer: Sizes and Dimensions are Approximate, Actual May Vary.



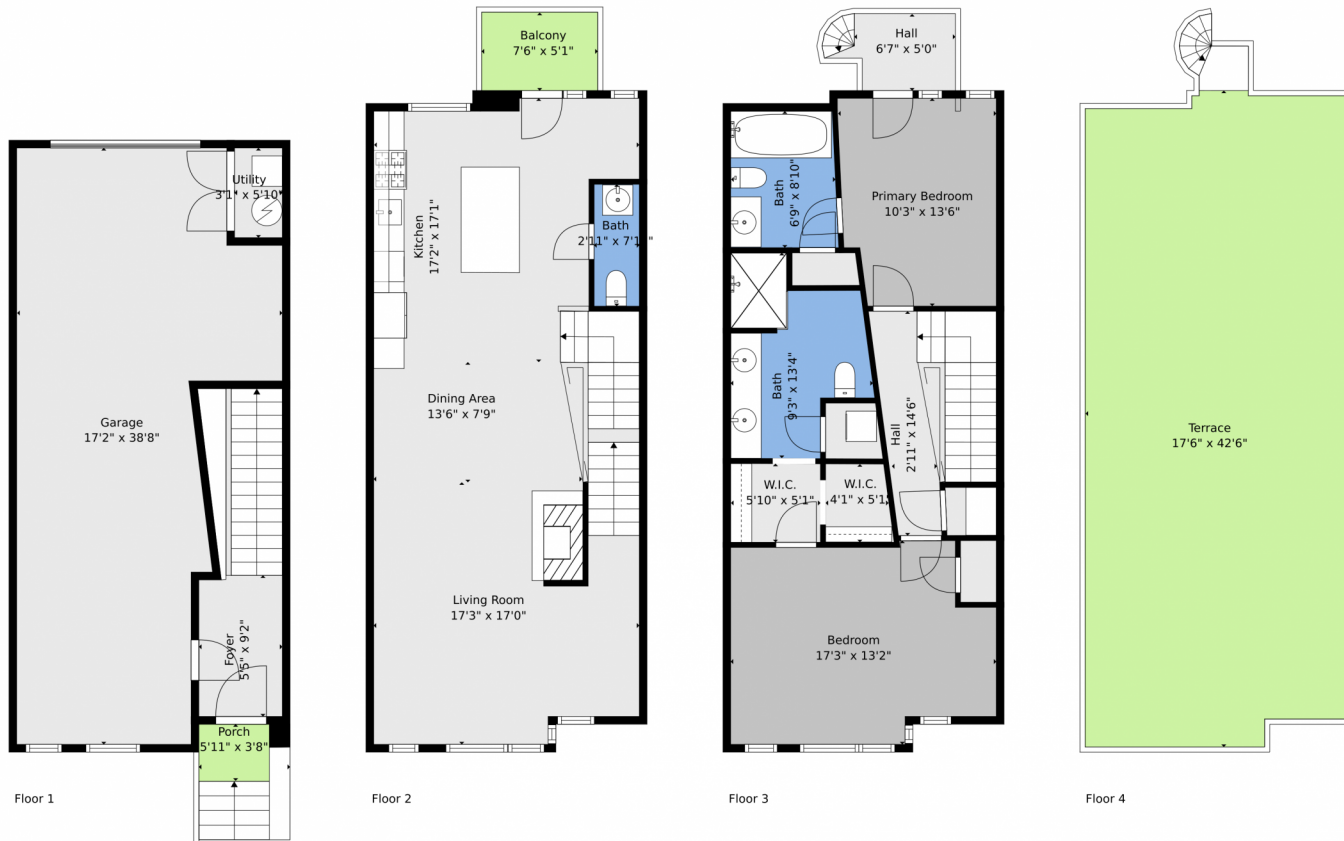
Kristine Heller
303-285-1568
leasing@elevatedpmc.com
<https://www.elevatedpmc.com/>



Scan code
for more
property
details



2345 Walnut Street, Denver, CO 80205 — All Levels



TOTAL: 1553 sq. ft
 BELOW GROUND: 106 sq. ft, FLOOR 2: 705 sq. ft, FLOOR 3: 742 sq. ft, FLOOR 4: 0 sq. ft
 EXCLUDED AREAS: UTILITY: 18 sq. ft, GARAGE: 511 sq. ft, PORCH: 44 sq. ft,
 BALCONY: 38 sq. ft, TERRACE: 740 sq. ft, WALLS: 134 sq. ft

Floor Plan Created By V1photos.com, Measurements Deamed Highly Reliable But Not Guaranteed.



Disclaimer: Sizes and Dimensions are Approximate, Actual May Vary.



Kristine Heller
 303-285-1568
leasing@elevatedpmc.com
<https://www.elevatedpmc.com/>

