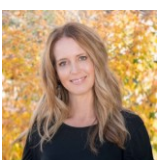




 Single Family  3027 SQFT  4 Beds  4 Baths  1 Car

PROPERTY DETAILS

Discover the best of Boulder in the Newlands Neighborhood, close to schools, hiking, and shopping. This ultra-modern luxury residence features stunning views and a vibrant city lifestyle. Enjoy an attached one-car garage, carport, and private fenced backyard for summer relaxation. Inside, gleaming hardwood floors and an open-concept main floor welcome you. The chef's kitchen boasts high-end appliances, a large island, and ample cabinet space. The family room, with a gas fireplace, opens to outdoor spaces. The primary suite offers breathtaking views of Mt. Sanitas, a private balcony, and a luxurious bath with a soaking tub. The upper level includes two more bedrooms and a second primary suite. Don't miss the rooftop deck, solar panels, and e-charging stations. Available now for a lease until November 30th, 2026, or shorter term. 4 bedrooms, 4 baths, 3027 sq ft, \$6000. 1 dog may be negotiable.



Terri Ellerington
303-929-8116
Info.peakpm@elevated-team.com



Scan code
for more
property
details

