

Single Family



1936 SQFT



3 Beds



3/1 Baths



**Taylor Haas**  
303-665-7368

taylorh@coloradorpm.com

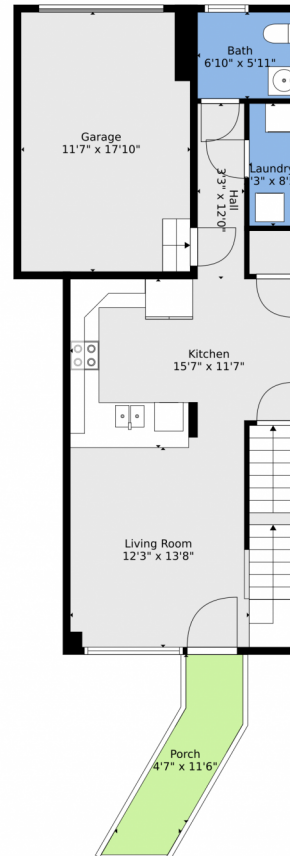
<https://www.coloradorpm.com/available-rental-properties-denver>



Scan code  
for more  
property  
details



## 4318 River Line Grove, Colorado Springs, CO 80911 — Main



**TOTAL: 1703 sq. ft**  
BELOW GROUND: 447 sq. ft, FLOOR 2: 518 sq. ft, FLOOR 3: 738 sq. ft  
EXCLUDED AREAS: UTILITY: 71 sq. ft, GARAGE: 207 sq. ft, PORCH: 60 sq. ft  
WALLS: 149 sq. ft

Floor Plan Created By V1photos.com, Measurements Deamed Highly Reliable But Not Guaranteed.



Disclaimer: Sizes and Dimensions are Approximate, Actual May Vary.



**Taylor Haas**

303-665-7368

taylorh@coloradorpm.com

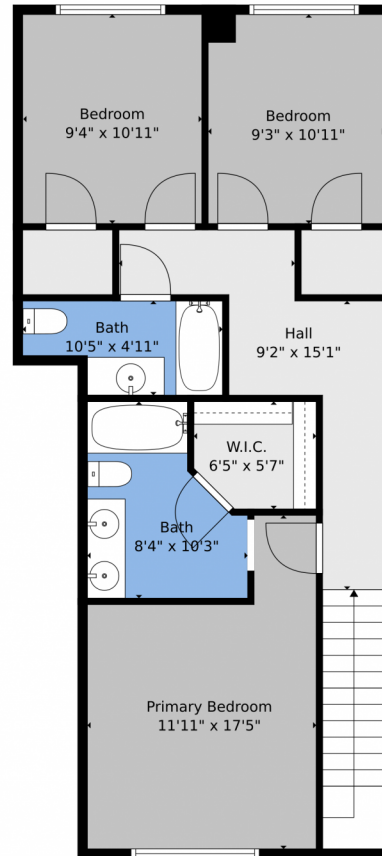
<https://www.coloradorpm.com/available-rental-properties-denver>



Scan code  
for more  
property  
details



## 4318 River Line Grove, Colorado Springs, CO 80911 — 2nd Level



**TOTAL: 1703 sq. ft**

BELOW GROUND: 447 sq. ft, FLOOR 2: 518 sq. ft, FLOOR 3: 738 sq. ft  
EXCLUDED AREAS: UTILITY: 71 sq. ft, GARAGE: 207 sq. ft, PORCH: 60 sq. ft  
WALLS: 149 sq. ft

Floor Plan Created By V1photos.com, Measurements Deamed Highly Reliable But Not Guaranteed.



Disclaimer: Sizes and Dimensions are Approximate, Actual May Vary.



**Taylor Haas**

303-665-7368

taylorh@coloradorpm.com

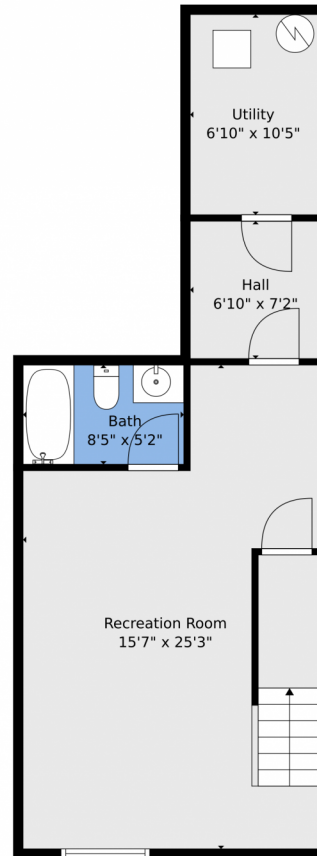
<https://www.coloradorpm.com/available-rental-properties-denver>



Scan code  
for more  
property  
details



## 4318 River Line Grove, Colorado Springs, CO 80911 — Basement



**TOTAL: 1703 sq. ft**  
BELOW GROUND: 447 sq. ft, FLOOR 2: 518 sq. ft, FLOOR 3: 738 sq. ft  
EXCLUDED AREAS: UTILITY: 71 sq. ft, GARAGE: 207 sq. ft, PORCH: 60 sq. ft  
WALLS: 149 sq. ft

Floor Plan Created By V1photos.com, Measurements Deamed Highly Reliable But Not Guaranteed.



Disclaimer: Sizes and Dimensions are Approximate, Actual May Vary.



**Taylor Haas**

303-665-7368

taylorh@coloradorpm.com

<https://www.coloradorpm.com/available-rental-properties-denver>



Scan code  
for more  
property  
details





# 4318 River Line Grove, Colorado Springs, CO 80911 — All Levels



**TOTAL: 1703 sq. ft**  
BELOW GROUND: 447 sq. ft, FLOOR 2: 518 sq. ft, FLOOR 3: 738 sq. ft  
EXCLUDED AREAS: UTILITY: 71 sq. ft, GARAGE: 207 sq. ft, PORCH: 60 sq. ft  
WALLS: 149 sq. ft

Floor Plan Created By V1photos.com, Measurements Deamed Highly Reliable But Not Guaranteed.



Disclaimer: Sizes and Dimensions are Approximate, Actual May Vary.



**Taylor Haas**

303-665-7368

taylorh@coloradorpm.com

<https://www.coloradorpm.com/available-rental-properties-denver>



Scan code  
for more  
property  
details

