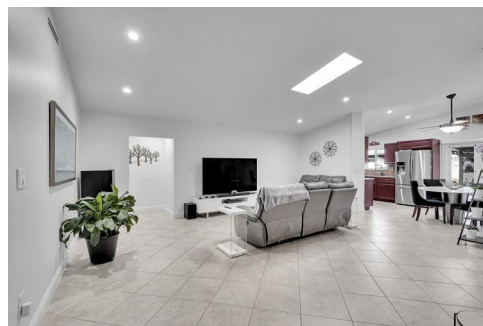


Stunning house ready to live in.



Single Family



2141 SQFT



5 Beds



3 Baths



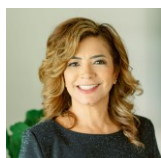
2 Car



0.21 Acre

PROPERTY DETAILS

Stunning 5-bedroom, 3-bathroom corner home with impact windows, a double garage, and parking for over 4 cars. Enjoy dual side entrances with space for your RV and boat, plus a large backyard ideal for entertaining, kids, and pets. The layout allows for a private in-law quarter for guests. Located in a desirable community near parks, schools, and major highways like the Palmetto, Turnpike, I-75, and I-95, this home blends comfort and convenience perfectly.



Diana Bermudez Agudelo P.A.
 786-210-1270
 realtor.bermudez@gmail.com
<https://dianabermudez.myrealtyonegroup.com>



Scan code
 for more
 property
 details

