

465 Apple Court
Eaton, CO 80615



Single Family



2920 SQFT



3 Beds



2/1 Baths



4 Car



0.19 Acre



Suzanne Ekeler

970-590-4841

suzanne@ekelerrealestate.com



Scan code
for more
property
details



465 Apple Court, Eaton, CO 80615 — Main



TOTAL: 2004 sq. ft
BELOW GROUND: 0 sq. ft, FLOOR 2: 910 sq. ft, FLOOR 3: 1094 sq. ft
EXCLUDED AREAS: BASEMENT: 561 sq. ft, UTILITY: 314 sq. ft, GARAGE: 917 sq. ft,
PORCH: 51 sq. ft, PATIO: 590 sq. ft, COVERED PATIO: 164 sq. ft,
STORAGE: 66 sq. ft, OPEN TO BELOW: 48 sq. ft
WALLS: 279 sq. ft

Floor Plan Created By V1photos.com, Measurements Deamed Highly Reliable But Not Guaranteed.



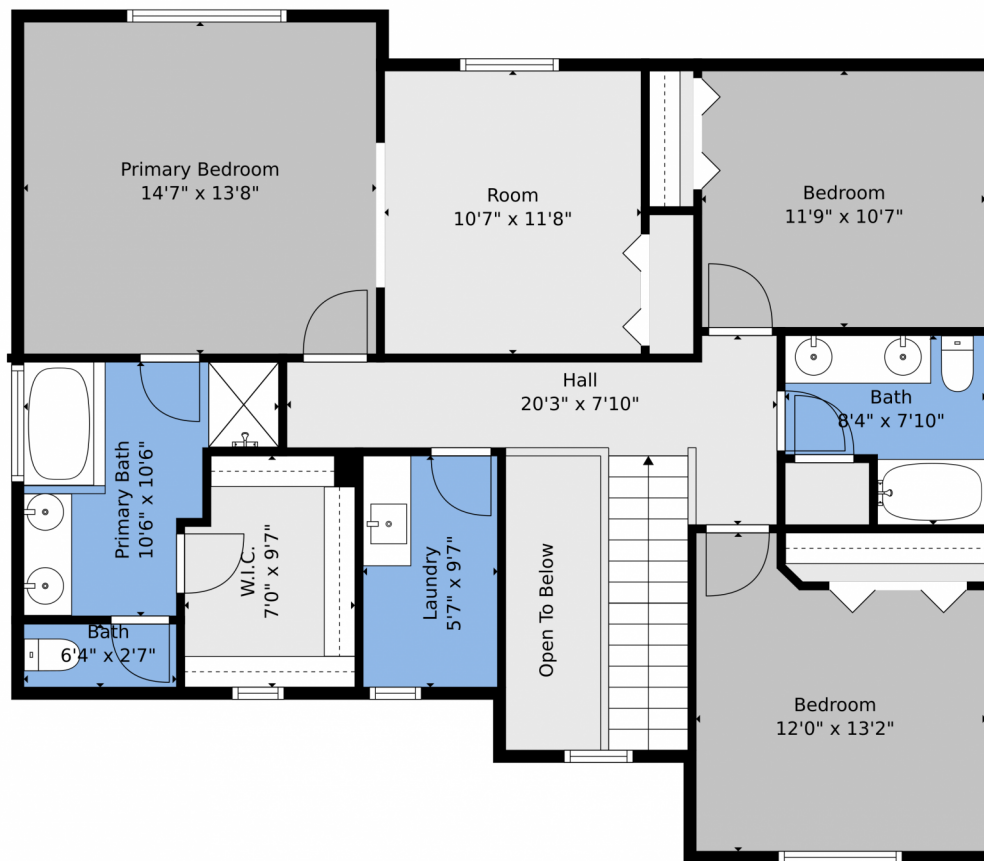
Disclaimer: Sizes and Dimensions are Approximate, Actual May Vary.



Suzanne Ekeler
970-590-4841
suzanne@ekelerrealestate.com



465 Apple Court, Eaton, CO 80615 – 2nd Level



TOTAL: 2004 sq. ft
BELOW GROUND: 0 sq. ft, FLOOR 2: 910 sq. ft, FLOOR 3: 1094 sq. ft
EXCLUDED AREAS: BASEMENT: 561 sq. ft, UTILITY: 314 sq. ft, GARAGE: 917 sq. ft,
PORCH: 51 sq. ft, PATIO: 590 sq. ft, COVERED PATIO: 164 sq. ft,
STORAGE: 66 sq. ft, OPEN TO BELOW: 48 sq. ft
WALLS: 279 sq. ft

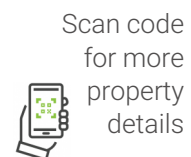
Floor Plan Created By V1photos.com, Measurements Deamed Highly Reliable But Not Guaranteed.



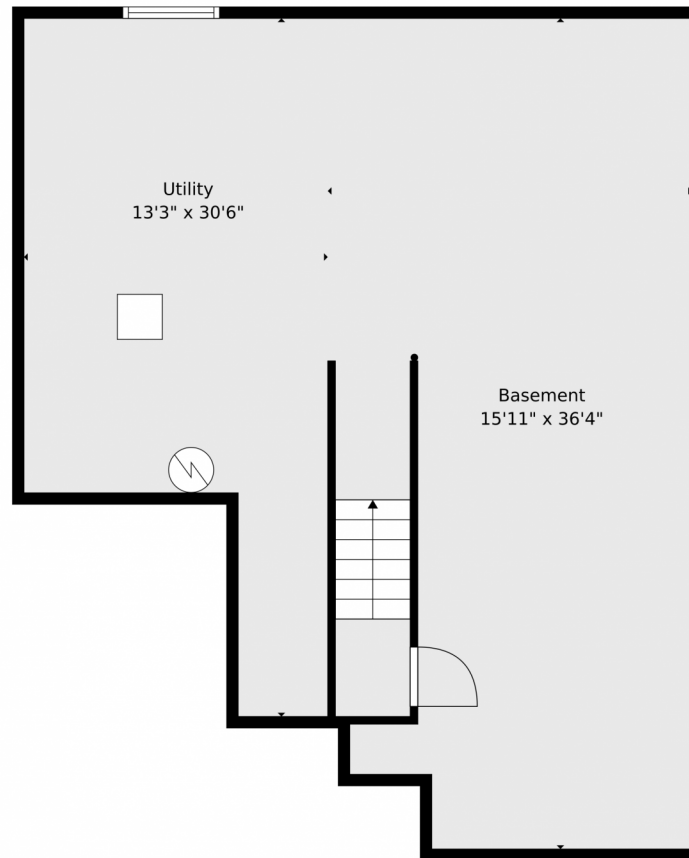
Disclaimer: Sizes and Dimensions are Approximate, Actual May Vary.



Suzanne Ekeler
970-590-4841
suzanne@ekelerrealestate.com



465 Apple Court, Eaton, CO 80615 — Basement



TOTAL: 2004 sq. ft
BELOW GROUND: 0 sq. ft, FLOOR 2: 910 sq. ft, FLOOR 3: 1094 sq. ft
EXCLUDED AREAS: BASEMENT: 561 sq. ft, UTILITY: 314 sq. ft, GARAGE: 917 sq. ft,
PORCH: 51 sq. ft, PATIO: 590 sq. ft, COVERED PATIO: 164 sq. ft,
STORAGE: 66 sq. ft, OPEN TO BELOW: 48 sq. ft
WALLS: 279 sq. ft

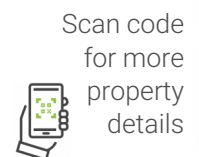
Floor Plan Created By V1photos.com, Measurements Deamed Highly Reliable But Not Guaranteed.



Disclaimer: Sizes and Dimensions are Approximate, Actual May Vary.



Suzanne Ekeler
970-590-4841
suzanne@ekelerrealestate.com



Scan code
for more
property
details



465 Apple Court, Eaton, CO 80615 — All Levels



TOTAL: 2004 sq. ft
 BELOW GROUND: 0 sq. ft, FLOOR 2: 910 sq. ft, FLOOR 3: 1094 sq. ft
 EXCLUDED AREAS: BASEMENT: 561 sq. ft, UTILITY: 314 sq. ft, GARAGE: 917 sq. ft,
 PORCH: 51 sq. ft, PATIO: 590 sq. ft, COVERED PATIO: 164 sq. ft,
 STORAGE: 66 sq. ft, OPEN TO BELOW: 48 sq. ft
 WALLS: 279 sq. ft

Floor Plan Created By V1photos.com, Measurements Deamed Highly Reliable But Not Guaranteed.



Disclaimer: Sizes and Dimensions are Approximate, Actual May Vary.



Suzanne Ekeler
 970-590-4841
suzanne@ekelerrealestate.com

