




1840 Chamberlin South
Colorado Springs, CO 80906



 Single Family

 1601 SQFT

 2 Beds

 2 Baths

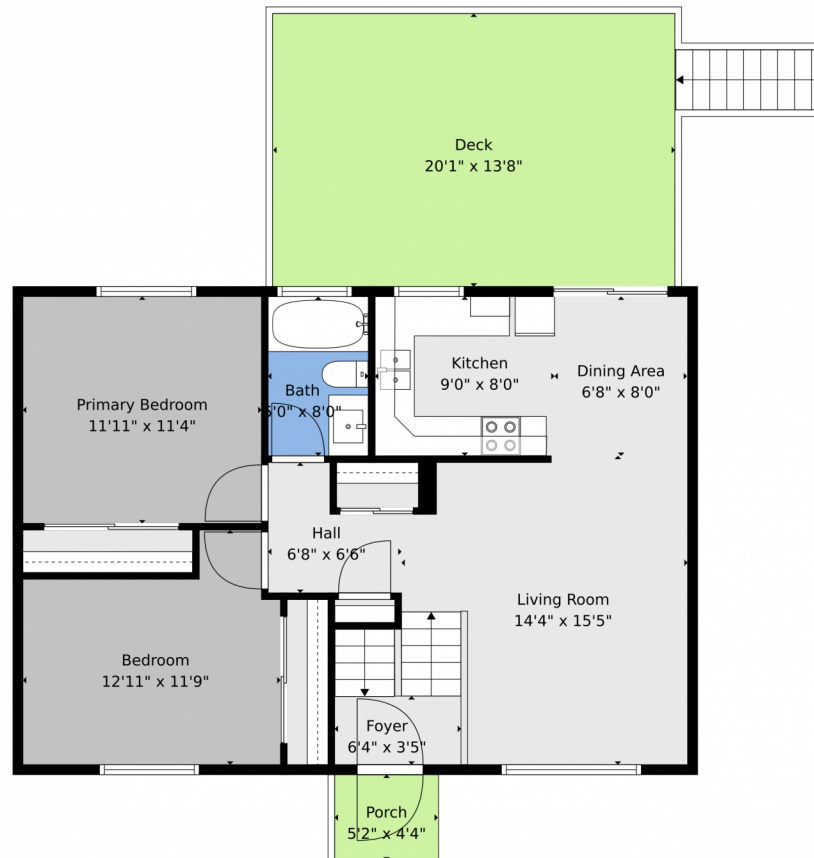


Taylor Haas
303-665-7368
taylorh@coloradorpm.com
<https://www.coloradorpm.com/available-rental-properties-denver>

Scan code
for more
property
details



1840 Chamberlin South, Colorado Springs, CO 80906 — Main



TOTAL: 1494 sq. ft
FLOOR 1: 715 sq. ft, FLOOR 2: 779 sq. ft
EXCLUDED AREAS: GARAGE: 272 sq. ft, UTILITY: 64 sq. ft, PORCH: 22 sq. ft,
DECK: 275 sq. ft
WALLS: 140 sq. ft

Floor Plan Created By V1photos.com, Measurements Deamed Highly Reliable But Not Guaranteed.



Disclaimer: Sizes and Dimensions are Approximate, Actual May Vary.



Taylor Haas

303-665-7368

taylorh@coloradorm.com

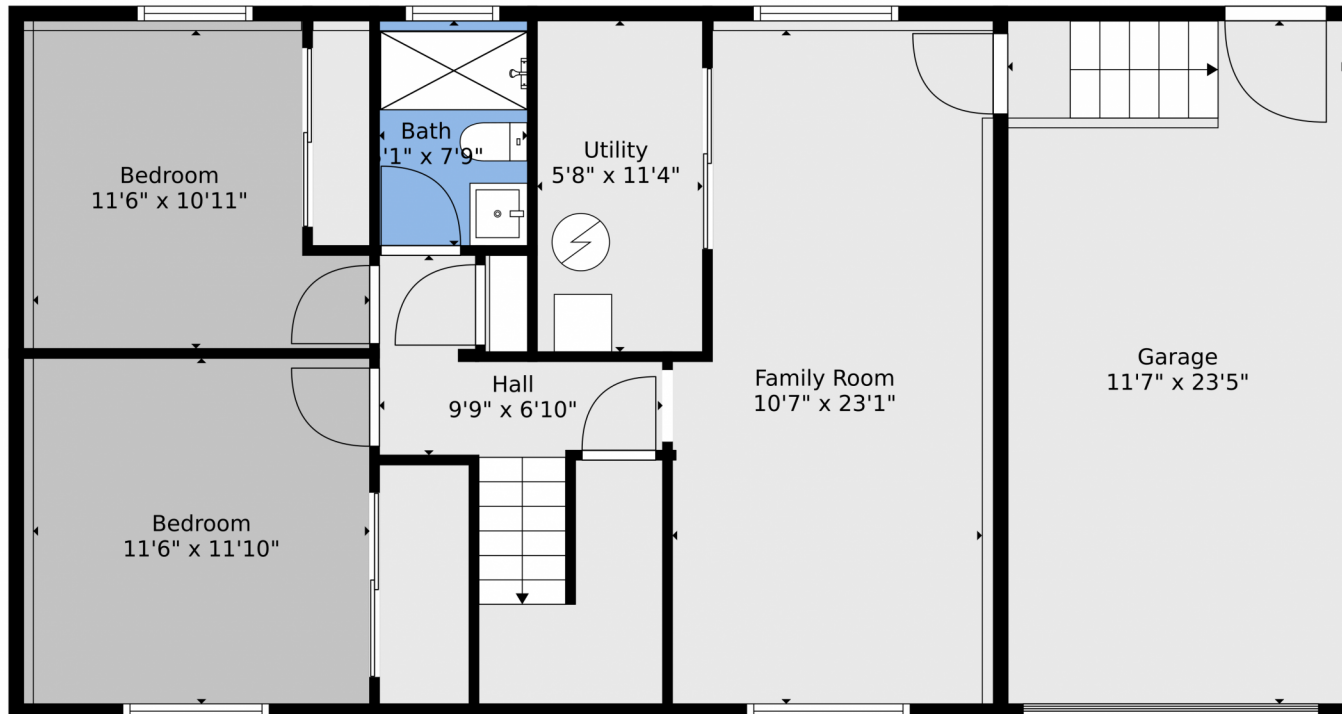
<https://www.coloradorm.com/available-rental-properties-denver>



Scan code
for more
property
details



1840 Chamberlin South, Colorado Springs, CO 80906 — Basement



TOTAL: 1494 sq. ft
FLOOR 1: 715 sq. ft, FLOOR 2: 779 sq. ft
EXCLUDED AREAS: GARAGE: 272 sq. ft, UTILITY: 64 sq. ft, PORCH: 22 sq. ft,
DECK: 275 sq. ft
WALLS: 140 sq. ft

Floor Plan Created By V1photos.com, Measurements Deamed Highly Reliable But Not Guaranteed.

Disclaimer: Sizes and Dimensions are Approximate, Actual May Vary.



Taylor Haas

303-665-7368

taylorh@coloradorpm.com

<https://www.coloradorpm.com/available-rental-properties-denver>



Scan code
for more
property
details



1840 Chamberlin South, Colorado Springs, CO 80906 — All Levels



TOTAL: 1494 sq. ft
FLOOR 1: 715 sq. ft, FLOOR 2: 779 sq. ft
EXCLUDED AREAS: GARAGE: 272 sq. ft, UTILITY: 64 sq. ft, PORCH: 22 sq. ft,
DECK: 275 sq. ft
WALLS: 140 sq. ft

Floor Plan Created By V1photos.com, Measurements Deamed Highly Reliable But Not Guaranteed.



Disclaimer: Sizes and Dimensions are Approximate, Actual May Vary.



Taylor Haas
303-665-7368
taylorh@coloradorm.com
<https://www.coloradorm.com/available-rental-properties-denver>



Scan code
for more
property
details

