




 Single Family

 1652 SQFT

 2 Beds

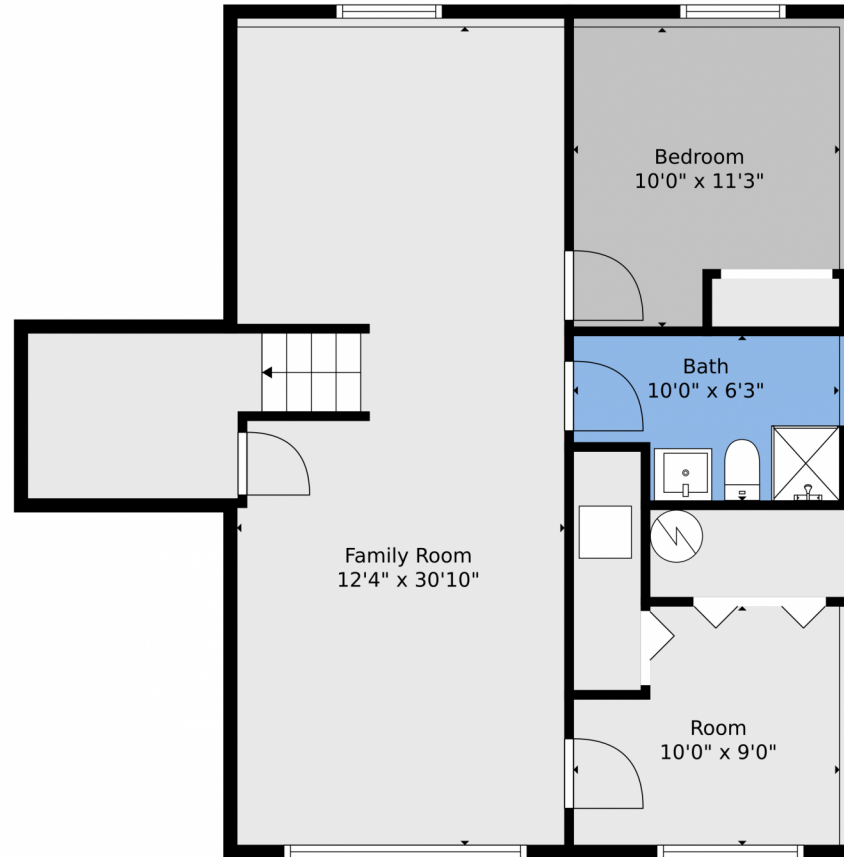
 2 Baths



**Taylor Haas**  
303-665-7368  
taylorh@coloradorpm.com  
<https://www.coloradorpm.com/available-rental-properties-denver>



## 1840 Southmoor Drive, Fountain, CO 80817 – Basement



**TOTAL: 1534 sq. ft**  
FLOOR 1: 720 sq. ft, FLOOR 2: 814 sq. ft  
EXCLUDED AREAS: UNDEFINED: 49 sq. ft, GARAGE: 215 sq. ft, PATIO: 462 sq. ft  
WALLS: 155 sq. ft

Floor Plan Created By V1photos.com, Measurements Deamed Highly Reliable But Not Guaranteed.



Disclaimer: Sizes and Dimensions are Approximate, Actual May Vary.



**Taylor Haas**

303-665-7368

taylorh@coloradorpm.com

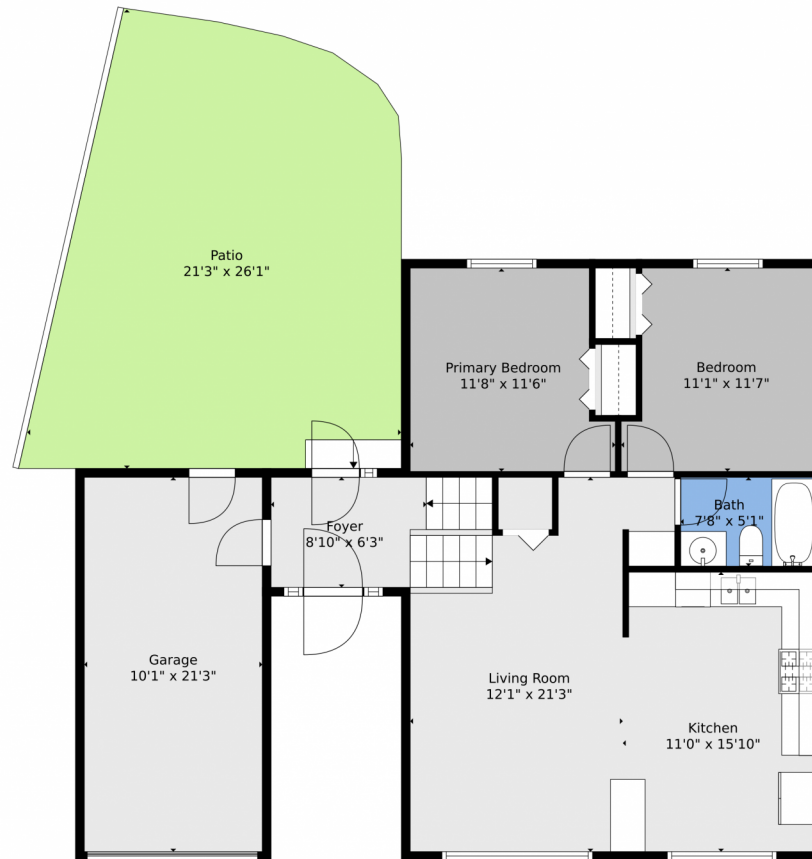
<https://www.coloradorpm.com/available-rental-properties-denver>



Scan code  
for more  
property  
details



## 1840 Southmoor Drive, Fountain, CO 80817 – First Floor



**TOTAL: 1534 sq. ft**  
FLOOR 1: 720 sq. ft, FLOOR 2: 814 sq. ft  
EXCLUDED AREAS: UNDEFINED: 49 sq. ft, GARAGE: 215 sq. ft, PATIO: 462 sq. ft  
WALLS: 155 sq. ft

Floor Plan Created By V1photos.com, Measurements Deamed Highly Reliable But Not Guaranteed.



Disclaimer: Sizes and Dimensions are Approximate, Actual May Vary.



**Taylor Haas**

303-665-7368

taylorh@coloradorpm.com

<https://www.coloradorpm.com/available-rental-properties-denver>



Scan code  
for more  
property  
details



# 1840 Southmoor Drive, Fountain, CO 80817 — All Floors



**TOTAL: 1534 sq. ft**  
FLOOR 1: 720 sq. ft, FLOOR 2: 814 sq. ft  
EXCLUDED AREAS: UNDEFINED: 49 sq. ft, GARAGE: 215 sq. ft, PATIO: 462 sq. ft  
WALLS: 155 sq. ft

Floor Plan Created By V1photos.com, Measurements Deamed Highly Reliable But Not Guaranteed.

Disclaimer: Sizes and Dimensions are Approximate, Actual May Vary.



**Taylor Haas**

303-665-7368

taylorh@coloradorm.com

<https://www.coloradorm.com/available-rental-properties-denver>



Scan code  
for more  
property  
details

