




131 Shiloh Drive
Cañon City, CO 81212



 Single Family

 1911 SQFT

 3 Beds

 2 Baths



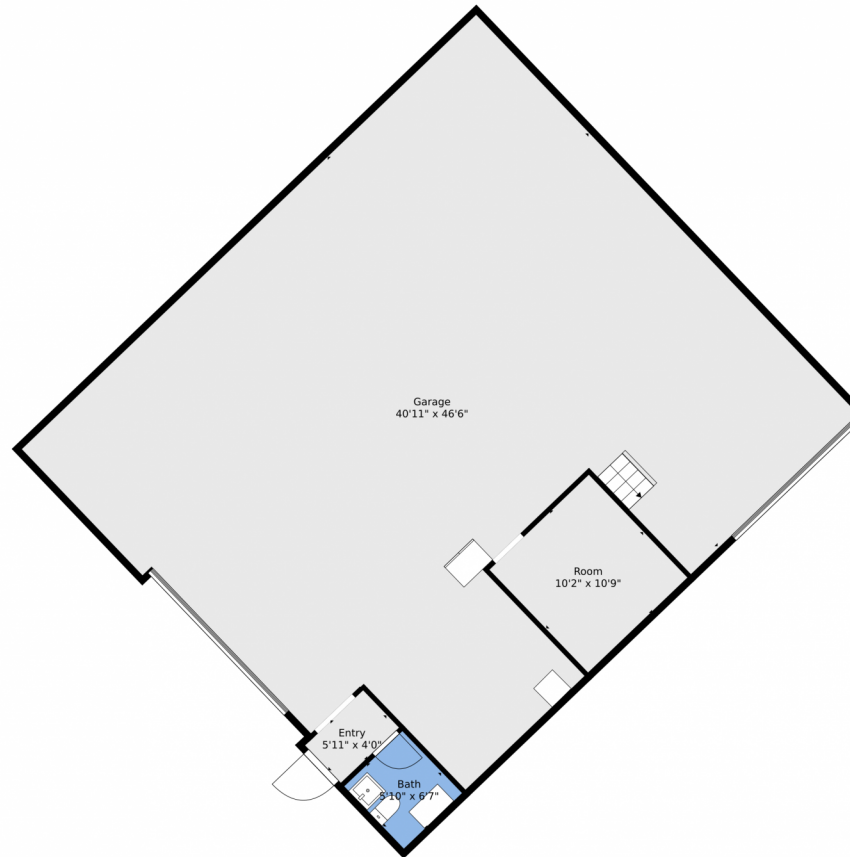
Cindy Rein
720-272-4890
cindy@reinrealty.net
<https://www.SherlockHomes.net>



Scan code
for more
property
details



131 Shiloh Drive, Cañon City, CO 81212 — Garage



TOTAL: 2346 sq. ft
FLOOR 1: 172 sq. ft, FLOOR 2: 0 sq. ft, FLOOR 3: 351 sq. ft, FLOOR 4: 1823 sq. ft
EXCLUDED AREAS: GARAGE: 2151 sq. ft, BASEMENT: 1734 sq. ft, PATIO: 166 sq. ft,
OPEN TO BELOW: 1551 sq. ft, PORCH: 71 sq. ft, DECK: 200 sq. ft,
FIREPLACE: 11 sq. ft
WALLS: 425 sq. ft

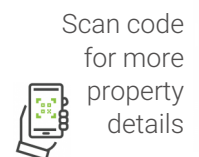
Floor Plan Created By V1photos.com, Measurements Deamed Highly Reliable But Not Guaranteed.



Disclaimer: Sizes and Dimensions are Approximate, Actual May Vary.



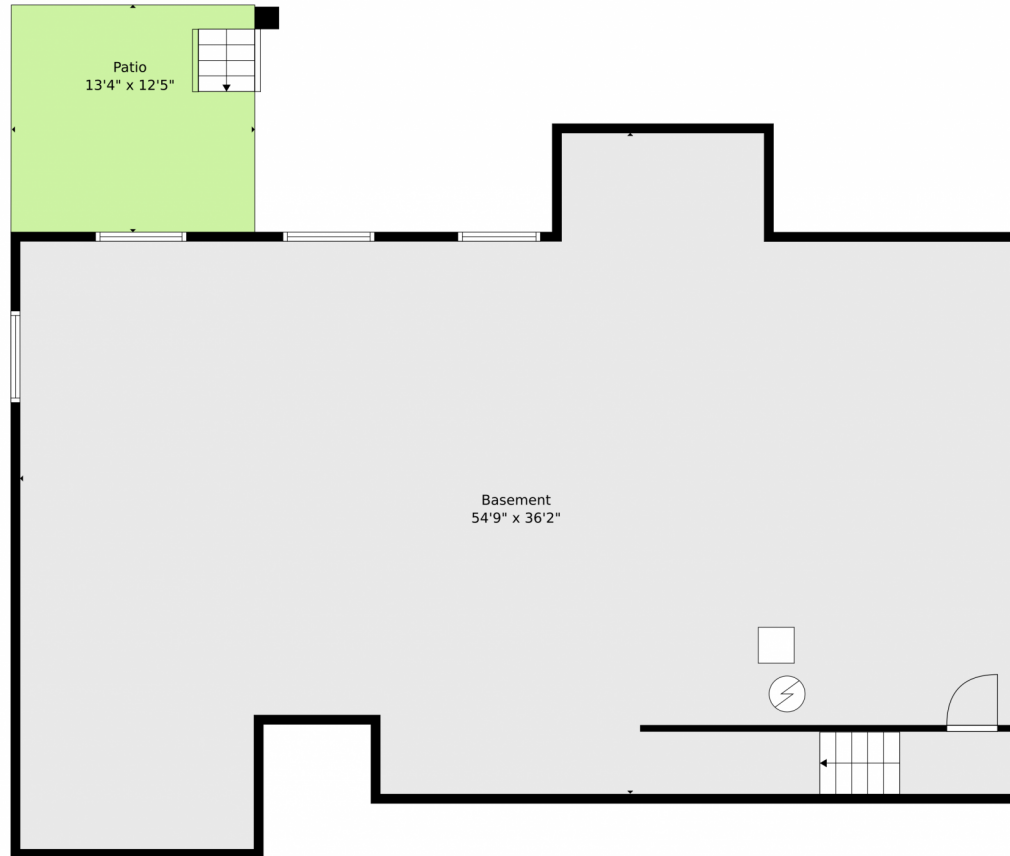
Cindy Rein
720-272-4890
cindy@reinrealty.net
<https://www.SherlockHomes.net>



Scan code
for more
property
details



131 Shiloh Drive, Cañon City, CO 81212 — Basement



TOTAL: 2346 sq. ft
FLOOR 1: 172 sq. ft, FLOOR 2: 0 sq. ft, FLOOR 3: 351 sq. ft, FLOOR 4: 1823 sq. ft
EXCLUDED AREAS: GARAGE: 2151 sq. ft, BASEMENT: 1734 sq. ft, PATIO: 166 sq. ft,
OPEN TO BELOW: 1551 sq. ft, PORCH: 71 sq. ft, DECK: 200 sq. ft,
FIREPLACE: 11 sq. ft
WALLS: 425 sq. ft

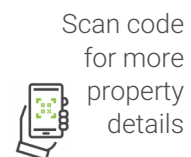
Floor Plan Created By V1photos.com, Measurements Deamed Highly Reliable But Not Guaranteed.



Disclaimer: Sizes and Dimensions are Approximate, Actual May Vary.

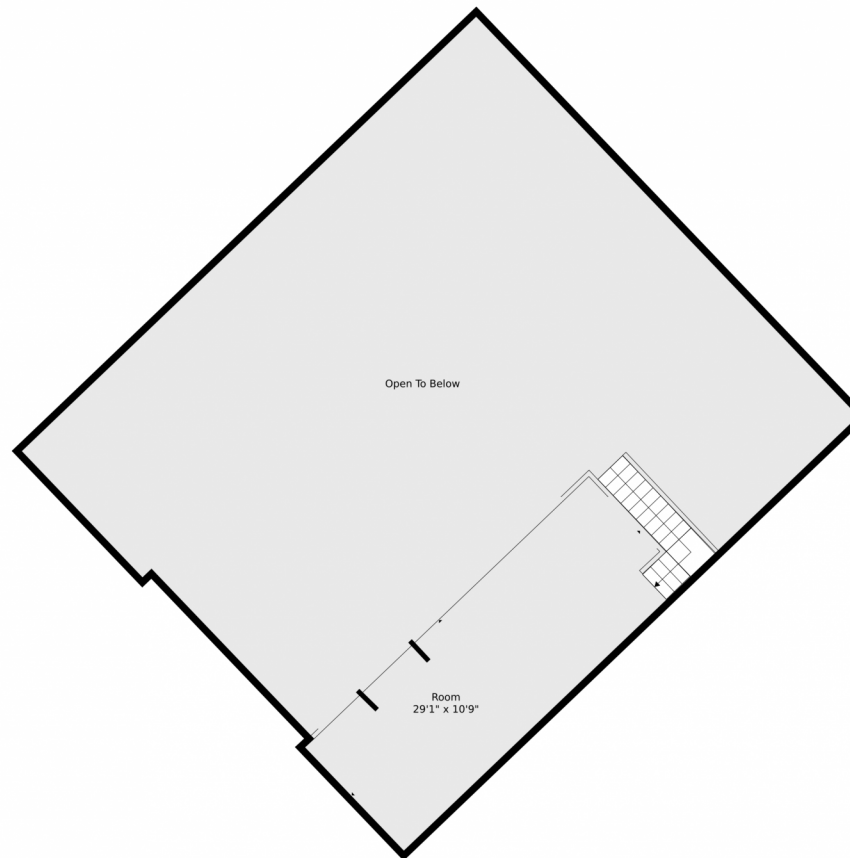


Cindy Rein
720-272-4890
cindy@reinrealty.net
<https://www.SherlockHomes.net>



Scan code
for more
property
details





TOTAL: 2346 sq. ft
FLOOR 1: 172 sq. ft, FLOOR 2: 0 sq. ft, FLOOR 3: 351 sq. ft, FLOOR 4: 1823 sq. ft
EXCLUDED AREAS: GARAGE: 2151 sq. ft, BASEMENT: 1734 sq. ft, PATIO: 166 sq. ft,
OPEN TO BELOW: 1551 sq. ft, PORCH: 71 sq. ft, DECK: 200 sq. ft,
FIREPLACE: 11 sq. ft
WALLS: 425 sq. ft

Floor Plan Created By V1photos.com, Measurements Deamed Highly Reliable But Not Guaranteed.



Disclaimer: Sizes and Dimensions are Approximate, Actual May Vary.



Cindy Rein
720-272-4890
cindy@reinrealty.net
<https://www.SherlockHomes.net>



Scan code
for more
property
details



131 Shiloh Drive, Cañon City, CO 81212 — Main Level



TOTAL: 2346 sq. ft
FLOOR 1: 172 sq. ft, FLOOR 2: 0 sq. ft, FLOOR 3: 351 sq. ft, FLOOR 4: 1823 sq. ft
EXCLUDED AREAS: GARAGE: 2151 sq. ft, BASEMENT: 1734 sq. ft, PATIO: 166 sq. ft,
OPEN TO BELOW: 1551 sq. ft, PORCH: 71 sq. ft, DECK: 200 sq. ft,
FIREPLACE: 11 sq. ft
WALLS: 425 sq. ft

Floor Plan Created By V1photos.com, Measurements Deamed Highly Reliable But Not Guaranteed.



Disclaimer: Sizes and Dimensions are Approximate, Actual May Vary.



Cindy Rein
720-272-4890
cindy@reinrealty.net
<https://www.SherlockHomes.net>



Scan code
for more
property
details



131 Shiloh Drive, Cañon City, CO 81212 — All Levels



TOTAL: 2346 sq. ft
FLOOR 1: 172 sq. ft, FLOOR 2: 0 sq. ft, FLOOR 3: 351 sq. ft, FLOOR 4: 1823 sq. ft
EXCLUDED AREAS: GARAGE: 2151 sq. ft, BASEMENT: 1734 sq. ft, PATIO: 166 sq. ft,
OPEN TO BELOW: 1551 sq. ft, PORCH: 71 sq. ft, DECK: 200 sq. ft,
FIREPLACE: 11 sq. ft
WALLS: 425 sq. ft

Floor Plan Created By V1photos.com, Measurements Deamed Highly Reliable But Not Guaranteed.



Disclaimer: Sizes and Dimensions are Approximate, Actual May Vary.



Cindy Rein
720-272-4890
cindy@reinrealty.net
<https://www.SherlockHomes.net>



Scan code
for more
property
details

